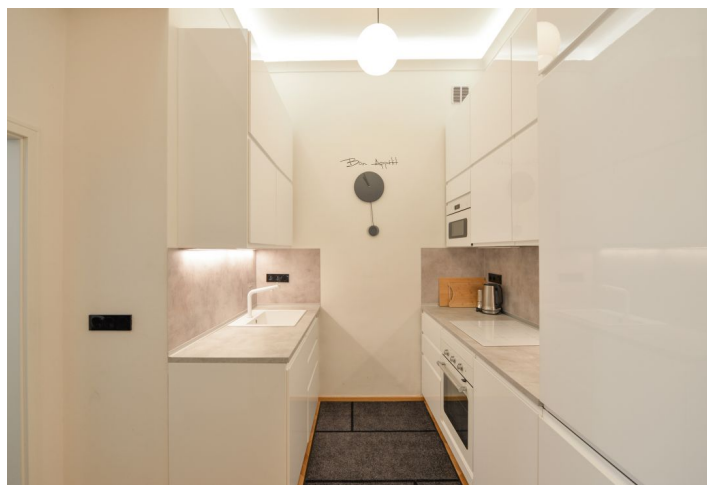




## Apartment One-bedroom (2+kk)

Rented

54 m<sup>2</sup>, Prague 2, Vyšehrad, Vratislavova





## Apartment One-bedroom (2+kk)

Rented

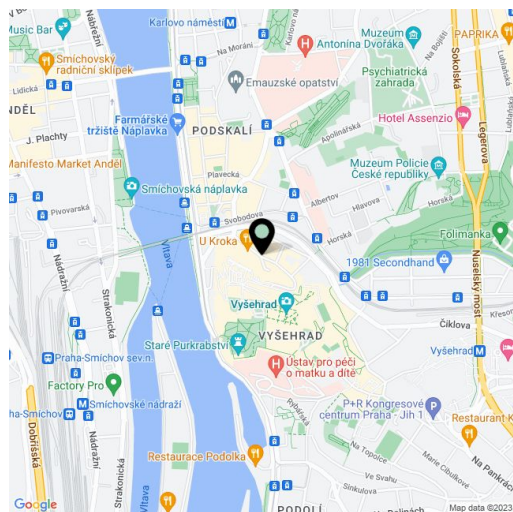
54 m<sup>2</sup>, Prague 2, Vyšehrad, Vratislavova

|                  |  |
|------------------|--|
| Total area       | 54 m <sup>2</sup>  |
| Parking          | -  |
| Cellar           | Yes  |
| Service price    | Deposit for services, water, and heating CZK 3,100/month. Electricity - transferred to the tenant. |
| PENB             | G  |
| Reference number | 31335  |
| Available from   | Immediately  |

Attractive apartment below the Vyšehrad Castle gardens. This completely refurbished and fully furnished apartment is on the ground floor of a well-maintained, renovated apartment building. Located on a quiet street below a large green park and near a children's playground, within walking distance of the Vltava embankment, with quick tram connections to the city center and the Palackého/Karlovo náměstí metro station, with full amenities within easy reach.

The interior offers a living room with a dining area, one bedroom, an en-suite bathroom (walk-in shower, toilet, bidet shower), a fully fitted walk-through kitchen, and an open entrance hall with built-in storage.

High ceilings, large windows, **hardwood parquet floors**, a security entry door, central heating, underfloor heating in the bathroom, a sofa bed, blinds, washing machine, dishwasher, induction cooktop, microwave oven, kitchenware, vacuum cleaner, TV, UPC cable connection, alarm. **Cellar** and a bike room in the building. Possible to use a maintained courtyard.



\* Size of the unit according to the Housing Act.

The area consists of the sum total of the internal area of every room.



## Apartment One-bedroom (2+kk)

54 m<sup>2</sup>, Prague 2, Vyšehrad, Vratislavova

Rented

