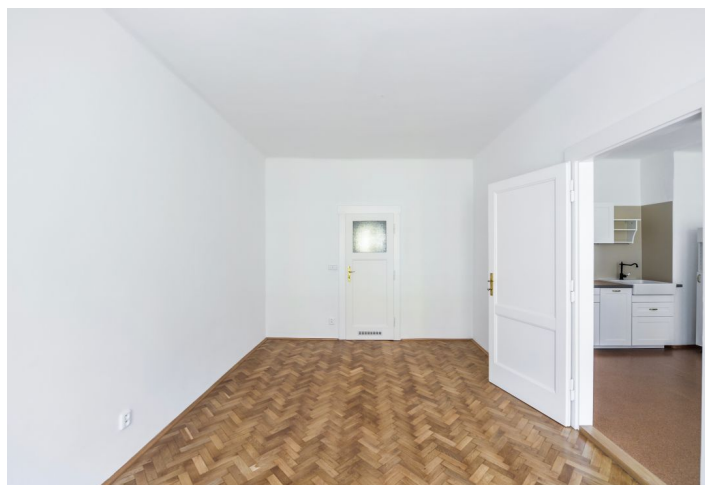
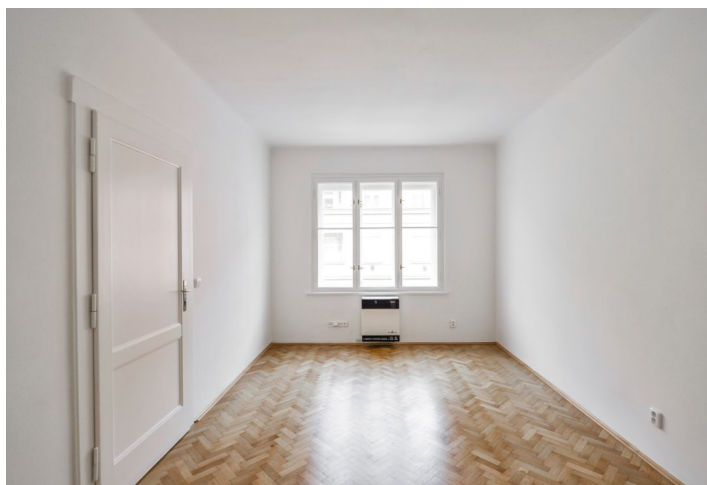




## Apartment One-bedroom (2+kk)

Rented

46 m<sup>2</sup>, Praha 6, Břevnov, Nad Závěrkou





## Apartment One-bedroom (2+kk)

Rented

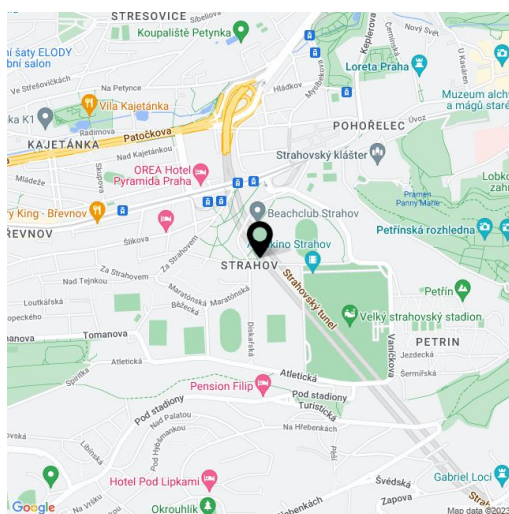
46 m<sup>2</sup>, Praha 6, Břevnov, Nad Závěrkou

Total area	46 m <sup>2</sup>
Parking	-
Cellar	-
PENB	G
Reference number	31397
Available from	Immediately

This fully newly renovated 1-bedroom apartment benefiting from preserved original details is on the second floor of a residential building with a shared courtyard and no lift. Situated in one of the most attractive residential areas of Prague 6, Břevnov, near a green park. Popular location in close vicinity of the Prague Castle (just a short walk) and Ladronka Park, with quick access to the city center, five short tram stops to Hradčanská and Malostranská metro. Full amenities within walking distance, convenient to the airport and international schools.

The apartment features a walk-through living room with a fully fitted open kitchen and a pantry, a spacious bedroom, an en-suite bathroom incl. a bathtub, a separate toilet, and an entrance hall with access to a small **winter garden**. All windows are facing the tranquil street.

High ceilings, large windows, **solid wood parquet floor**, cork floor, roller blinds, gas heating, washing machine, dishwasher, shared bike storage in the building. Deposit for service charges and utilities CZK 2000 per month.



\* Area of the unit according to the Civil Code. The area consists of the sum total area of the entire unit bounded by perimeter walls.