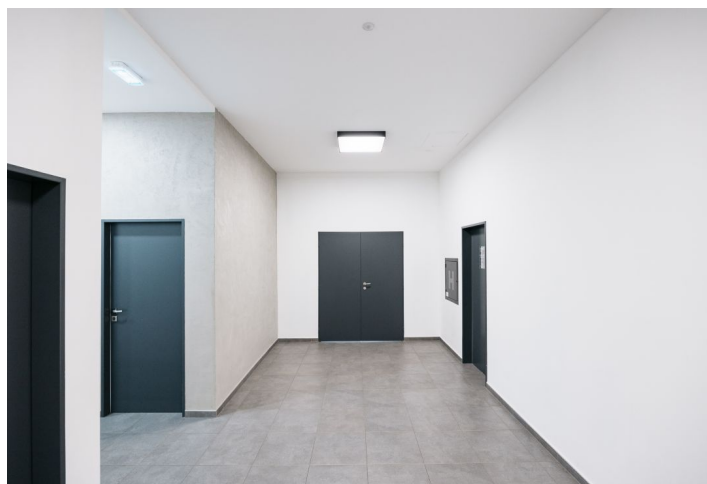




## Office space

Prague 9, Letňany, Rýmařovská

€ 17.62 / m<sup>2</sup> | CZK 444 / m<sup>2</sup>



**Office space**

Prague 9, Letňany, Rýmařovská

**€ 17.62 / m<sup>2</sup> | CZK 444 / m<sup>2</sup>**

<b>Available area</b>	186 m <sup>2</sup>
<b>Cellar</b>	-
<b>Terrace</b>	160 m <sup>2</sup>
<b>Parking</b>	Yes
<b>PENB</b>	G
<b>Reference number</b>	31399

Office space for lease on the 1st floor in a completely renovated ex-cultural house. The building now has a reception area, social facilities on each floor, a large terrace, a café and commercial space on the ground floor. A quiet area with excellent civic amenities and a wide range of sports opportunities in the water park, tennis center, surf arena, outdoor gym, or winter sports stadium located nearby.

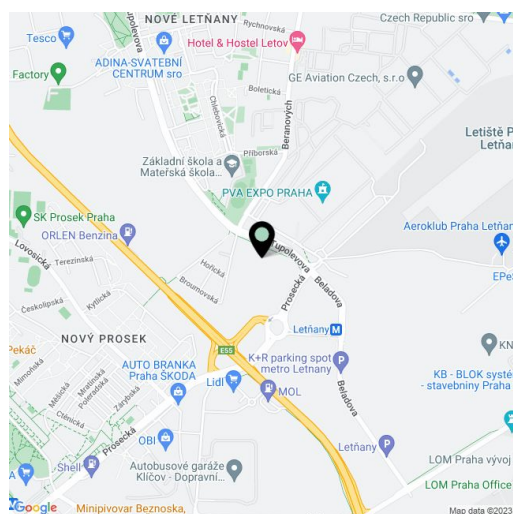
**Location:**

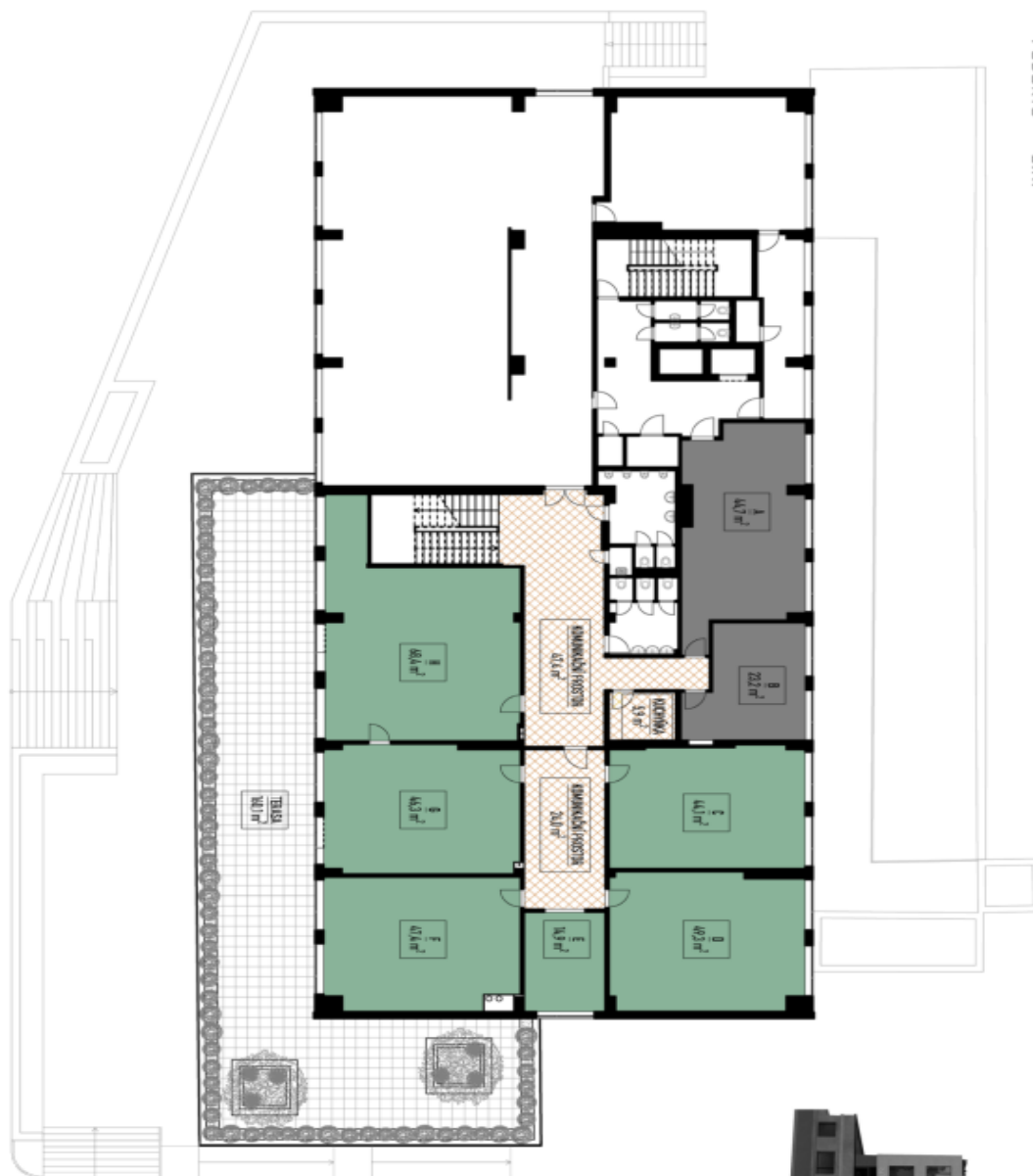
Several kindergartens, schools, and the Letňany forest park within walking distance. The Letňany metro station (line C) is a 12-minute bus ride-away. Easy access to Václav Havel Airport due to the good connection to the Blanka tunnel.

**Facilities and services:**

Commercial space on the ground floor  
 Open space layout  
 Floor boxes  
 Air conditioning  
 Kitchenette  
 Reception  
 Toilets

Rental and service charges are listed without VAT. Lessee pays no commission.





PUDORYS 2.NP

