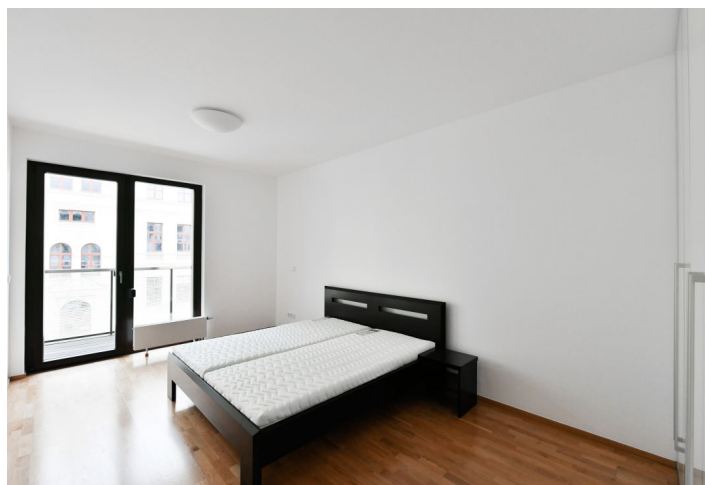
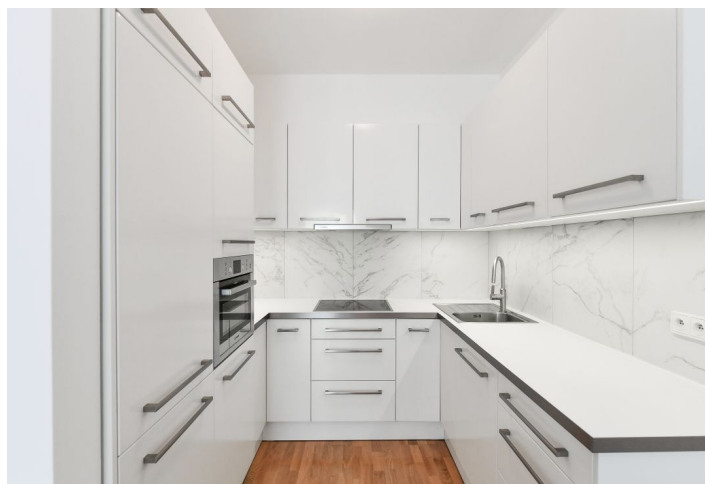




## Apartment One-bedroom (2+kk)

Rented

73 m<sup>2</sup>, Praha 4, Michle, Baarova





## Apartment One-bedroom (2+kk)

Rented

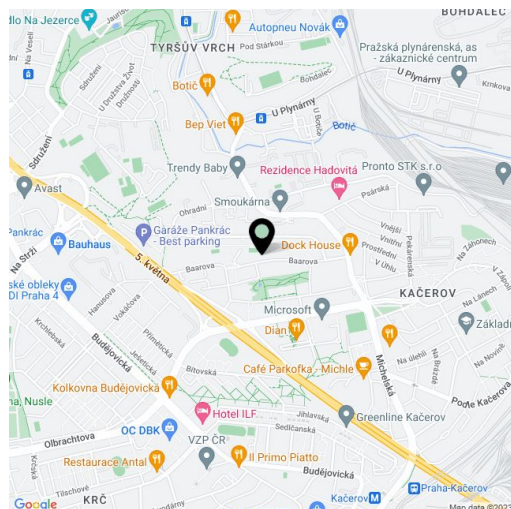
73 m<sup>2</sup>, Praha 4, Michle, Baarova

Total area	76 m <sup>2</sup>
Floor area*	73 m <sup>2</sup>
Balcony	3 m <sup>2</sup>
Parking	Garage parking at CZK 2000/month.
Garage	Yes
Cellar	Yes
PENB	G
Reference number	31646
Available from	Immediately

This is a completely furnished 1-bedroom apartment with a balcony on the second floor with lift in the recently built Residential Park Baarova complex with a 24/7 reception and security, a park, a children's playground and underground parking. The residence is located in an area offering full range of amenities, near the BB Centrum and Brumlovka multipurpose centers, with bus connections to Budějovická and Pankrác metro stations and quick access to the city center.

The interior features a living room with a fully fitted open kitchen, dining space and a bay window, one bedroom with a **balcony** and built-in wardrobes, a bathroom (bathtub with a shower screen, double sink, bidet, toilet), a laundry room, an additional separate toilet, and an entrance hall with built-in wardrobes.

**Wooden floors, marble tiling**, security entry door, French windows, external and internal blinds, washer, dryer, dishwasher, basic kitchenware, TV, 4.7 m<sup>2</sup> **cellar**, chip entry to the building. One **garage parking space** available at CZK 2000. Monthly deposit for common building charges and utilities is CZK 5500.



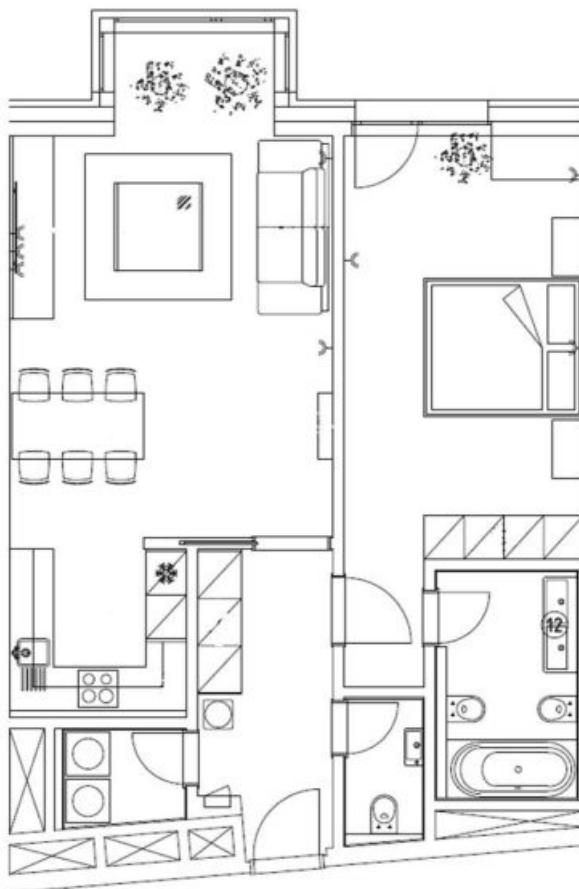
\* Area of the unit according to the Civil Code. The area consists of the sum total area of the entire unit bounded by perimeter walls.



# Apartment One-bedroom (2+kk)

Rented

73 m<sup>2</sup>, Praha 4, Michle, Baarova



## Byt 2+kk

1	Předsíň / Entrance Hall	8,1 m <sup>2</sup>
2	Obývací pokoj / Living room	27,5 m <sup>2</sup>
3	Kuchyně / Kitchen	5,6 m <sup>2</sup>
4	Koupelna / Bathroom	5,8 m <sup>2</sup>
5	Ložnice / Bedroom	21,0 m <sup>2</sup>
6	Komora / Utility room	2,4 m <sup>2</sup>
7	WC / Toilet	2,1 m <sup>2</sup>
<b>Celková plocha bytu</b>		<b>72,5 m<sup>2</sup></b>
8	Balkón, terasa / Balcony, terrace	2,9 m <sup>2</sup>
	Sklep / Storage(C-1.20)	4,7 m <sup>2</sup>