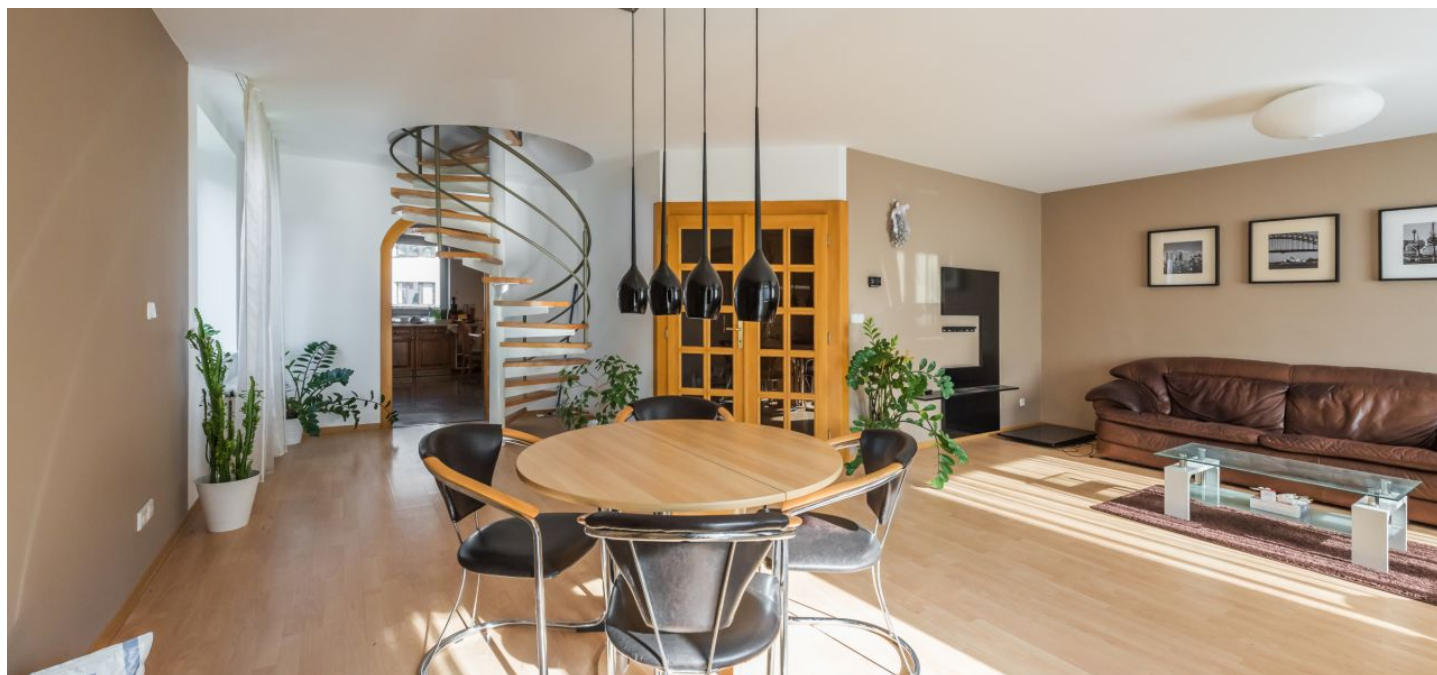




House Seven-bedroom (8+1)

350 m², Prague 4, Újezd, Krajanská

Rented





House Seven-bedroom (8+1)

Rented

350 m², Prague 4, Újezd, Krajanská

Plot	429 m²
Foot print	129 m²
Garden	300 m²
Parking	Double garage and covered parking on the plot.
Garage	Yes
Cellar	Yes
PENB	D
Reference number	31701
Available from	Immediately

This is a corner 6-7-bedroom 4-bathroom townhouse with 2 terraces, a balcony and a garden, in a quiet Prague 4 neighborhood. The unfurnished house is located in a tranquil residential neighborhood in close vicinity of the Milíčovský forest with bike and hiking trails. Within walking distance or about a ten min. walk are Opatov and Háje metro stations and complete amenities including kindergartens, primary schools, a grammar school, a medical center, a supermarket, children's playgrounds and more.

The main floor is made up of a living room with a **terrace** and stairs leading to the garden, a fully fitted eat-in kitchen with a large pantry, a bathroom with a bathtub, and a toilet. The first floor offers 3 bedrooms - one with a **balcony** and a fitted **walk-in closet**, a bathroom with a bathtub, a walk-in shower and a bidet, a separate toilet, and a hall with a circular staircase leading from the living room. The second floor includes a second living room (or a bedroom) with a **terrace**, a tiled room (can be second kitchen), one bedroom, a **walk-in closet**, a bathroom with a bathtub, and a toilet. The top floor, accessible via another circular staircase, features 2 bedrooms and a shower room with a toilet. The basement (lower ground floor) holds a room with garden access, a fitness room, a toilet, a laundry room, utility area, storage, and garage access.

Laminated floating floors, tiles, built-in storage, blinds, terrace awning, gas boiler, dishwasher, induction cooktop, microwave oven, alarm, automatic garage door. **Double garage and covered parking on the plot** is available. Utilities are billed separately. Unfurnished. Available from May 1, 2019.

