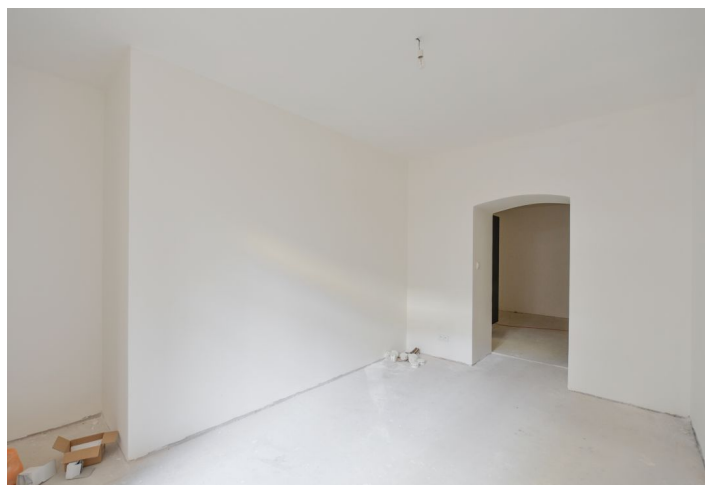
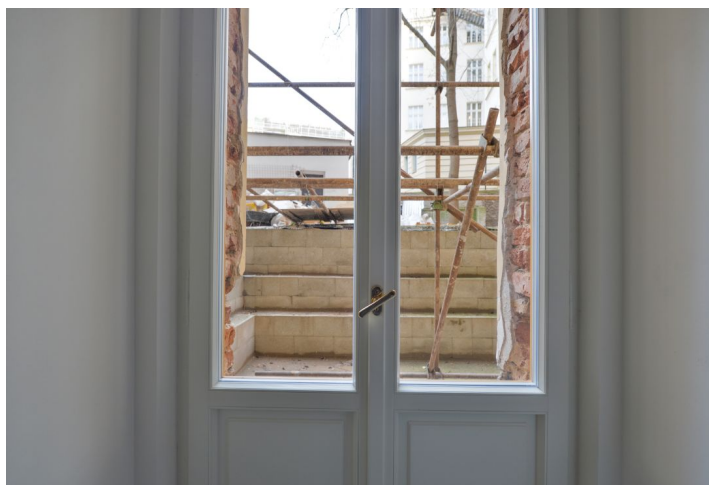




## Apartment One-bedroom (2+kk)

Ask for price

50 m<sup>2</sup>, Prague 3, Vinohrady, Slavíkova





## Apartment One-bedroom (2+kk)

Ask for price

50 m<sup>2</sup>, Prague 3, Vinohrady, Slavíkova

Total area	50 m <sup>2</sup>
Garden	24 m <sup>2</sup>
Parking	-
Cellar	Yes
PENB	G
Reference number	31725

This apartment with a front garden is located in the basement of a boutique residential project, consisting of the reconstruction of a 19th-century apartment building. In an attractive residential area of Vinohrady just a few steps from Riegrovy Sady Park, Jiřího z Poděbrad Square, or the Žižkov TV Tower. Completion is scheduled for summer 2020.

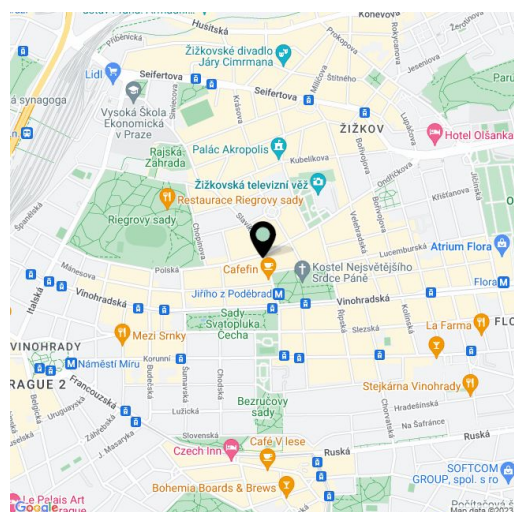
The layout offers a living room with access to a front garden, a kitchen, a bedroom with windows facing the courtyard, and a bathroom with a toilet.

The apartment is offered in a completely finished state with the option of white walls finishing (i.e. before the completion of the final surfaces - floors, tiles). Facilities include oak floors, large-format tiles, high quality sanitary ware, cassette interior doors and replicas of casement windows, double-paned entrance doors with period mouldings, data distribution, a home phone, and a preparation for a satellite TV. Heating will be provided by a central boiler room in the basement. The purchase price includes a cellar.

The sought-after location provides all civic amenities and easy access to the center thanks to the close proximity of a tram stop and the Jiřího z Poděbrad metro station (line A). Within walking distance, there are both kindergartens and elementary schools, high schools, shops, cafes, and restaurants, the Akropolis Palace, Mahlerovy Sady Garden with the Žižkov TV Tower and the Sokol Královské Vinohrady swimming pool in Riegrovy Sady Park.

Interior 49.6 m<sup>2</sup>, front garden 24 m<sup>2</sup>, cellar.

In addition to regular property viewings, we also offer real time video viewings via WhatsApp, FaceTime, Messenger, Skype, and other apps.



\* Area of the unit according to the Civil Code. The area consists of the sum total area of the entire unit bounded by perimeter walls.



## Apartment One-bedroom (2+kk)

Ask for price

50 m<sup>2</sup>, Prague 3, Vinohrady, Slavíkova

