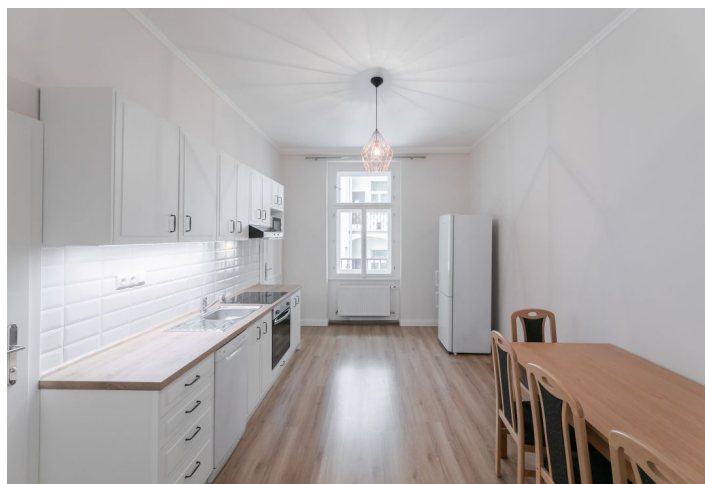




Apartment One-bedroom (2+1)

Rented

56 m², Praha 2, Vyšehrad, Vratislavova





Apartment One-bedroom (2+1)

Rented

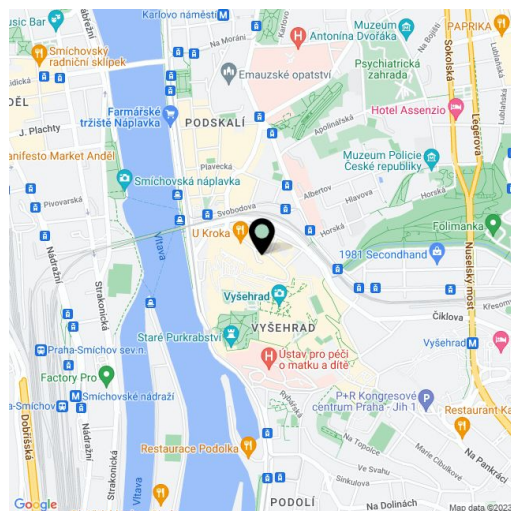
56 m², Praha 2, Vyšehrad, Vratislavova

Total area	56 m ²
Parking	-
Cellar	-
PENB	G
Reference number	31756
Available from	Immediately

Apartment below the Vyšehrad Castle gardens. This completely newly renovated 1-bedroom apartment is on the second floor of a fully renovated building with a lift, with a children's playground just next door and a green park nearby. Quiet residential street within walking distance of the Vltava embankment, with quick tram connections to the city center and the Palackého / Karlovo náměstí metro station, and with full amenities within easy reach.

The interior features a living room with a fully fitted open plan kitchen and a dining area, one bedroom, a bathroom with a bathtub and a toilet, a utility room, and an entrance hall. Both main rooms are facing an adjacent green slope.

New kitchen, windows and doors, high ceilings, laminated floors, tiles, electric heating, gas boiler, washer, dishwasher, microwave oven. Service charges and water fee are CZK 700/person/month. Electricity bills will be transferred to the tenant. Partially furnishes!



* Area of the unit according to the Civil Code. The area consists of the sum total area of the entire unit bounded by perimeter walls.