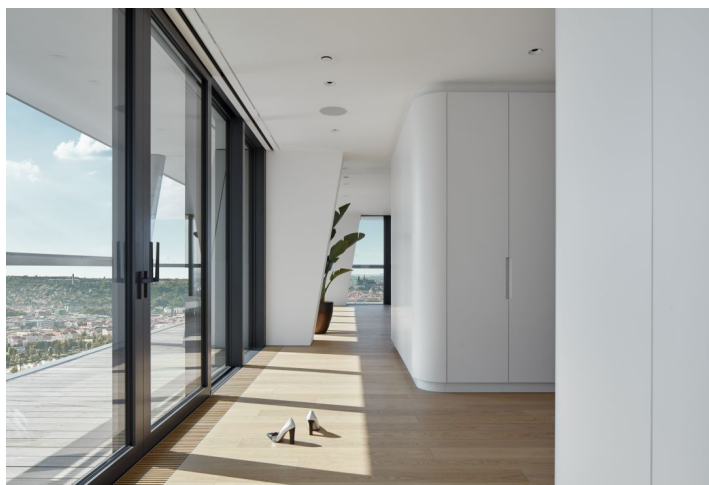




## Apartment Four-bedroom (5+1)

Ask for price

339 m<sup>2</sup>, Praha 4, Krč, Milevská





## Apartment Four-bedroom (5+1)

339 m<sup>2</sup>, Praha 4, Krč, Milevská

Ask for price

Total area	597 m <sup>2</sup>
Floor area*	339 m <sup>2</sup>
Terrace	258 m <sup>2</sup>
Parking	Garage for 4 cars and 1 separate space
Garage	Yes
Cellar	Yes
PENB	A
Reference number	31816

### Western Penthouse

This unique penthouse with a 360° rooftop terrace with a private pool takes up the top 3 floors of the western tower of V TOWER, Prague, the tallest residential building in the Czech Republic.

This three-story penthouse with a total floor area of 597.1 sq. m. boasts an airy layout, logically separating the private from the day zone. On the 28th floor, there is an entrance hall with a private elevator that stops at all three levels, an impressive staircase leading to the next floor, 3 bedrooms with ensuite bathrooms (2 with walk-in closets), a closet, and 2 terraces. Upstairs, there is a generous living space with access to a small terrace, and an adjoining kitchen and dining room connected to the 50-meter south-facing terrace. On the same floor, there is a study, a bathroom, 2 closets, and a separate toilet. The third floor of the penthouse, with an outdoor staircase as well as an elevator, includes an over-170 sq. m. rooftop terrace with a stainless steel pool and unobstructed views of Prague and its surroundings.

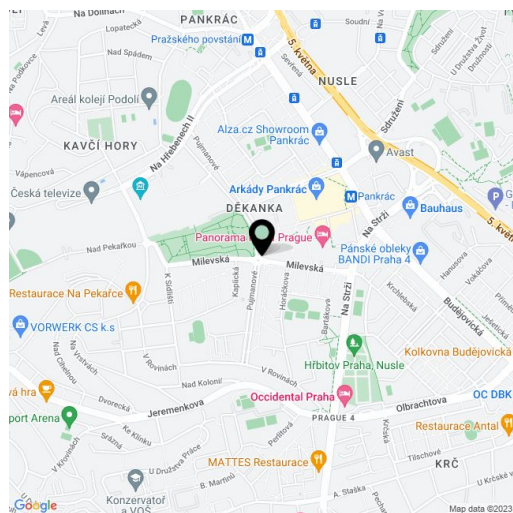
A feeling of complete freedom and privacy is guaranteed not only by its elevated location of 266 meters above sea level, but also by its high-standard noise-reducing walls and high-quality noise control measures built into the façade. Clean air and a comfortable temperature are guaranteed by an air exchange system and state-of-the-art natural air conditioning. Large-format windows provide plenty of daylight and panoramic views of the city. In addition, thanks to the building's unique design, each room has access to a balcony or terrace. To ensure the comfort of its residents, the apartment is fully furnished with pieces by the traditional Italian Molteni brand, which has been making high-quality furniture since 1934.

V TOWER, Prague offers the same superior level of comfort as Manhattan and London luxury skyscrapers. Residents will be able to enjoy a wide range of high-level services, including a 24hr reception and technical management, concierge services, a spa and wellness area, a gym, a private cinema with a DOLBY Atmos audio system, and much more. The penthouse comes with a private garage for 4 full-size cars, 1 separate parking space, and 1 electric car charging station. The entire building boasts first-class technologies and materials. Designed by experts from all around the world, this V-shaped architectural landmark is a celebrated addition to the Prague skyline.

Total area 339.4 m<sup>2</sup>, terraces 257.7 m<sup>2</sup>.

For more information, please visit the [www.vtowerpenthouse.com](http://www.vtowerpenthouse.com) website.

In addition to regular property viewings, we also offer real-time video



\* Area of the unit according to the Civil Code. The area consists of the sum total area of the entire unit bounded by perimeter walls.



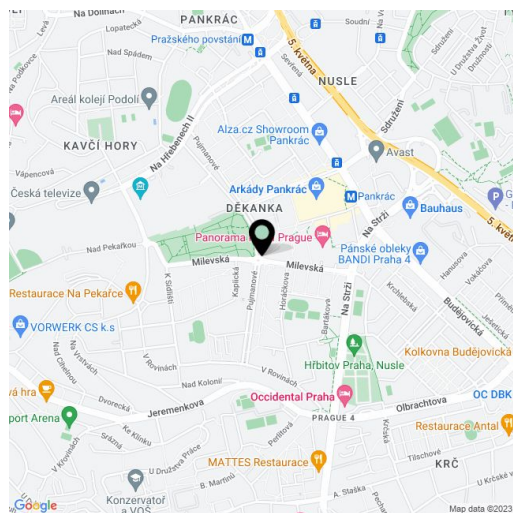
## Apartment Four-bedroom (5+1)

Ask for price

339 m<sup>2</sup>, Praha 4, Krč, Milevská

viewings via WhatsApp, FaceTime, Messenger, Skype, and other apps.

Total area	597 m <sup>2</sup>
Floor area*	339 m <sup>2</sup>
Terrace	258 m <sup>2</sup>
Parking	Garage for 4 cars and 1 separate space
Garage	Yes
Cellar	Yes
PENB	A
Reference number	31816



\* Area of the unit according to the Civil Code. The area consists of the sum total area of the entire unit bounded by perimeter walls.



# Apartment Four-bedroom (5+1)

Ask for price

339 m<sup>2</sup>, Praha 4, Krč, Milevská

TOWER PRAGUE  
VITĚZSKÁ

ZP2  
5+1

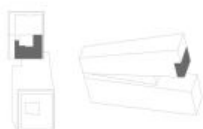
NADEMNÍ 29.  
PODLAŽÍ 29TH FLOOR

3 LOŽNICE  
BEDROOM

KOUPELNY / BATHS 3

CELKOVÁ PODLAŽOVÁ PLOCHA BYTU 339,4 m<sup>2</sup>  
TOTAL APARTMENT AREA

257,7 m<sup>2</sup> CELKOVÁ PLOCHA TERAS  
TOTAL TERRACE AREA







# Apartment Four-bedroom (5+1)

Ask for price

339 m<sup>2</sup>, Praha 4, Krč, Milevská

TOWER PRAGUE  
VITĚZSKÁ

**ZP2**  
5+1

NADEZENÍ  
30.  
PODLAZI / SOUTH FLOOR  
**OBÝVACÍ POKOJ**  
LIVING ROOM

PRACOVNA / STUDY ROOM  
KOUPELNY / BATHS 1,5

CELKOVÁ PODLAHOVÁ PLOCHA BYTU 339,4 m<sup>2</sup>  
TOTAL APARTMENT AREA

257,7 m<sup>2</sup> CELKOVÁ PLOCHA TERAS  
TOTAL TERRACE AREA





# Apartment Four-bedroom (5+1)

339 m<sup>2</sup>, Praha 4, Krč, Milevská

Ask for price

TOWER PRAGUE  
VITĚZS VAVROVÉ

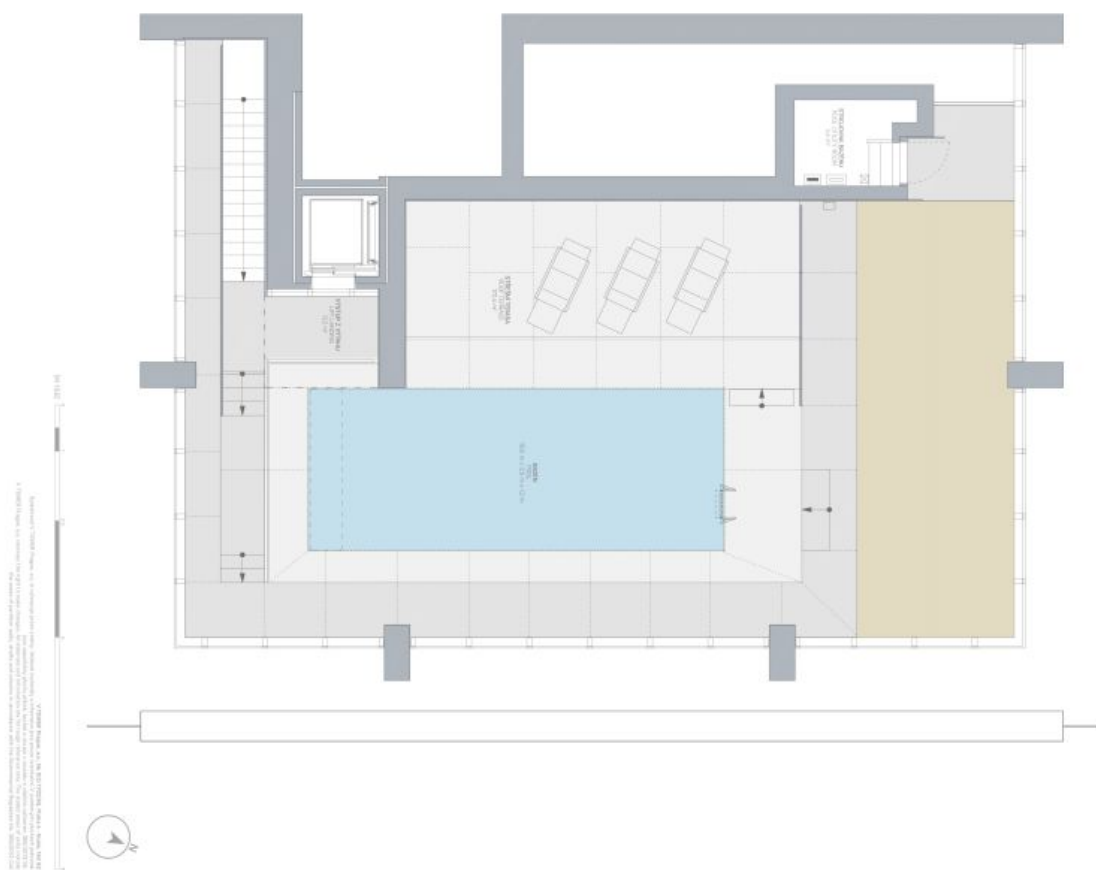
**ZP2**  
5+1

STŘEŠNÍ TERASA  
ROOF TERRACE

BAZÉN  
POOL

CELKOVÁ PODLAHOVÁ PLOCHA BYTU 339,4 m<sup>2</sup>  
TOTAL APARTMENT AREA

257,7 m<sup>2</sup> CELKOVÁ PLOCHA TERAS  
TOTAL TERRACE AREA





# Apartment Four-bedroom (5+1)

339 m<sup>2</sup>, Praha 4, Krč, Milevská

Ask for price

**TOWER PRAGUE**  
VILKETS BARRIO

**ZP2**  
1+5

**1. PODZEMNÍ PODLAŽÍ**  
1ST UNDERGROUND FLOOR

**1 GARÁŽ / GARAGE**  
1 SKLEP / CELLAR

**GARÁŽOVÁ STANÍČ. / PARKING NO.**  
123, 124, 129, 130 **69,9 m<sup>2</sup>**

**PARKOVACÍ STANÍČ. / PARKING NO.**  
189 **13,3 m<sup>2</sup>**

**SKLEP 1S25 / CELLAR 1S25**  
**4,0 m<sup>2</sup>**

