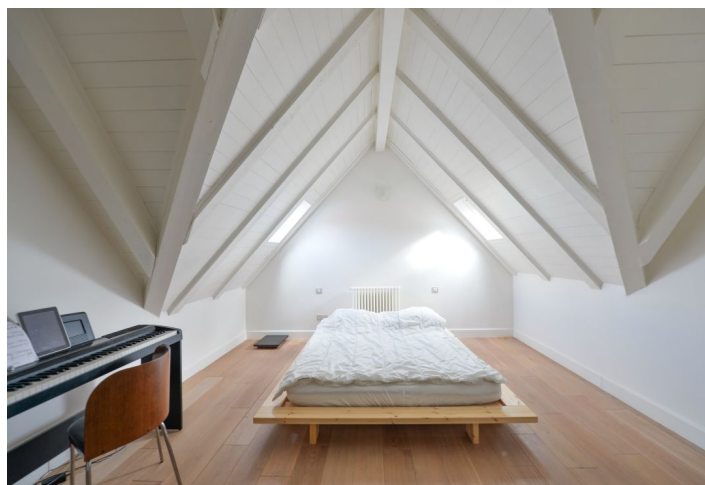




Apartment Two-bedroom (3+kk)

Rented

103 m², Prague 2, Vinohrady, Vozova





Apartment Two-bedroom (3+kk)

Rented

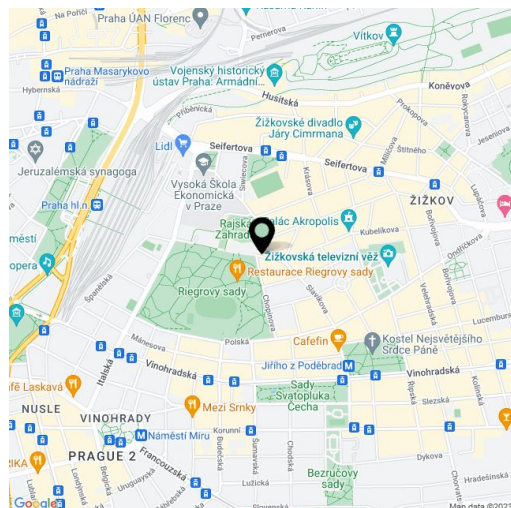
103 m², Prague 2, Vinohrady, Vozova

Total area	110 m ²
Floor area*	103 m ²
Balcony	7 m ²
Parking	-
Cellar	Yes
PENB	C
Reference number	31885
Available from	Immediately

This fully air-conditioned, furnished 2-bedroom 2-bathroom split-level attic apartment is on the top 4th floor of a completely renovated historic building with a lift. Situated just around the corner from the Riegrovy Sady Park, in the popular Vinohrady residential neighborhood, with full amenities within easy reach and great access to the city center. Located within walking distance of the Jiřího z Poděbrad metro station, with bus and tram stops just a few minutes away.

The lower floor offers an open plan living room and a dining area with access to both balconies facing the back yard garden, plus a fully fitted kitchen with a serving window, a toilet with a bidet shower, and an open entrance hall. The upper floor includes 2 bedrooms with atelier windows, en-suite bathrooms (bathtub / walk-in shower, sink, bidet, toilet) and large storage spaces under the ceiling.

Quality equipment and finishes, **hardwood floors**, wooden stairs and bedroom ceilings, stone tiles in bathrooms, gas boiler, blinds, washing machine, dishwasher, TV, video entry phone, **cellar**. Service charges and water are billed separately. Gas and electricity will be transferred to the tenant. Available from April 1, 2019.



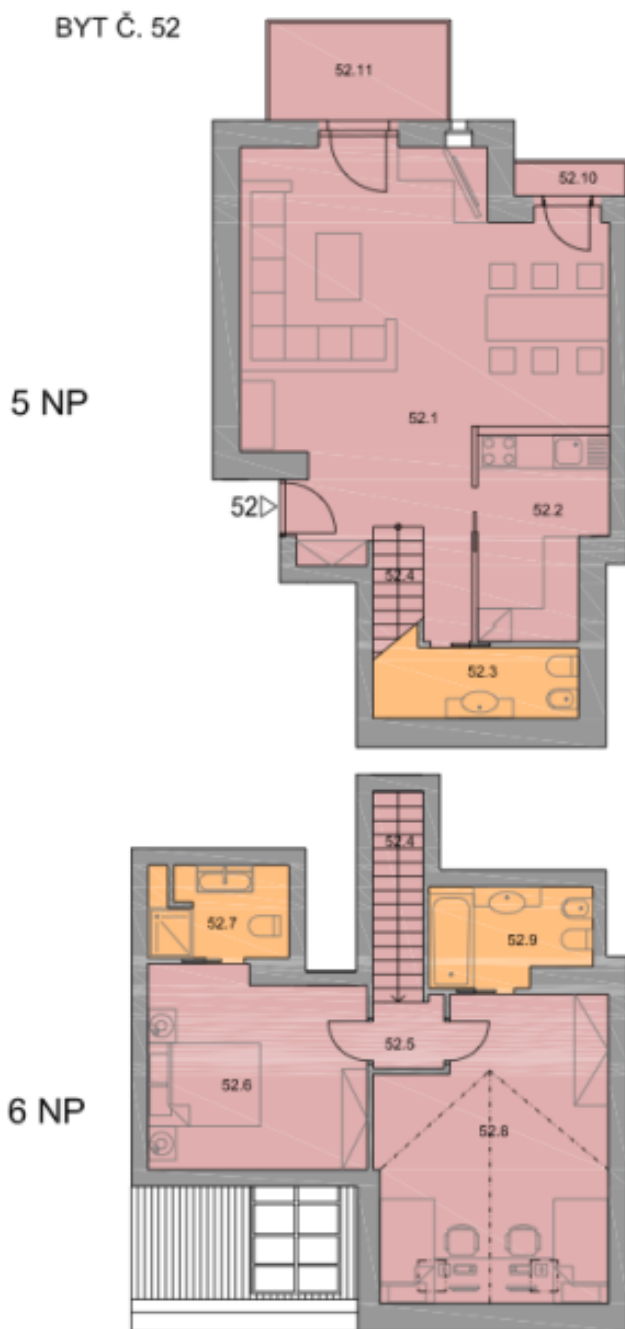
* Area of the unit according to the Civil Code. The area consists of the sum total area of the entire unit bounded by perimeter walls.



Apartment Two-bedroom (3+kk)

103 m², Prague 2, Vinohrady, Vozova

Rented



m 1:100



BYTOVÝ DŮM VOZOVÁ 6 - VINOHRADY		
PROJEKCE:	P&B Costruzioni Progettazioni	
INVESTOR:	PEXEN s.r.o.	
PŮDORYS 5NP BYT č. 52		
PŮDORYS SUTERÉNU SKLEPNÍ KÓJE		
52.1	OBÝVACÍ POKOJ S KUCHYŇSKÝM KOUTEM	39,68 m ²
52.2	KUCHYŇ	7,76 m ²
52.3	WC	6,06 m ²
52.4	SCHODIŠTĚ	3,82 m ²
52.5	PŘEDSÍŇ	1,70 m ²
52.6	POKOJ	13,71 m ²
52.7	KOUPENA + WC	4,08 m ²
52.8	POKOJ	21,14 m ²
52.9	KOUPENA + WC	4,91 m ²
	PLOCHA BYTU	102,86 m ²
52.10	BALKÓN	1,27 m ²
52.11	BALKÓN	5,94 m ²
52.12	SKLEPNÍ KÓJE	8,92 m ²