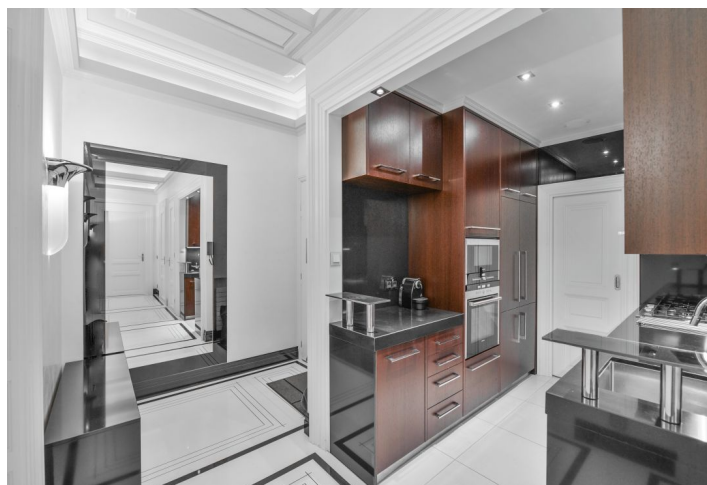




Apartment Three-bedroom (4+kk)

Rented

120 m², Prague 3, Žižkov, Lucemburská





Apartment Three-bedroom (4+kk)

Rented

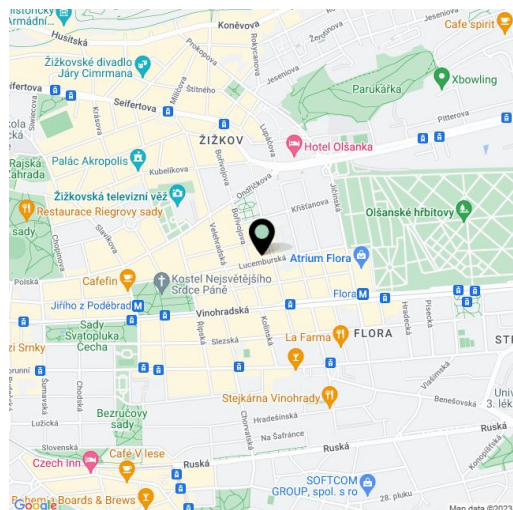
120 m², Prague 3, Žižkov, Lucemburská

Total area	120 m ²
Parking	-
Cellar	-
Service price	Building service charges and water: CZK 650/person/month, Internet CZK 700/month. Gas and electricity - transfer to the tenant.
PENB	G
Reference number	31900
Available from	Immediately

This elegant, completely refurbished and furnished 3-bedroom apartment designed by an architect is situated on the third floor of a traditional building without an elevator. Located on a quiet street on the border of Žižkov and Vinohrady, with convenient access to the city center and full amenities in the area. The Flora metro station and the Atrium Flora shopping mall is a short walk away, and Jiřího z Poděbrad Square, Parukářka Park, and Riegrovy sady Park are withing walking distance.

The interior includes a comfortable corner living room with a dining area, a fully fitted open plan kitchen with a pantry, three separate bedrooms with built-in wardrobes, a bathroom incl. a bathtub, and a walk-in shower with an oversized rainfall shower head, a separate toilet with a bidet shower, and a large entrance hall.

Top standard equipment and finishes, **Natuzzi** furniture, high ceilings, **Wenge wood flooring**, artificial stone tiling in the hall, **Laminam ceramic tiling** in the bathroom, **Venetian plaster** walls, high-quality original light fixtures, security entry door, Junkers gas boiler, **Gaggenau** kitchen, **Miele** washer and dryer, dishwasher, microwave oven, **Bose** audio system, two TV sets. Possible to arrange cleaning at CZK 2,000/month.



* Area of the unit according to the Civil Code. The area consists of the sum total area of the entire unit bounded by perimeter walls.



Apartment Three-bedroom (4+kk)

120 m², Prague 3, Žižkov, Lucemburská

Rented

NABYTEK A ZAŘÍZENÍ M 1:50



TABULKA MÍSTNOSTÍ NOVÝ STAV:

Číslo místnosti	Užitá plocha (m ²)	Nákladní hodnota	Podlaží	Stavba	Stavba	Stavba	Stavba
1.01	13,34	21	1.0	BRANĚNÍ	BRANĚNÍ	BRANĚNÍ	BRANĚNÍ
1.02	17,34	27	1.0	POKOJ	POKOJ	POKOJ	POKOJ
1.03	17,34	27	1.0	POKOJ	POKOJ	POKOJ	POKOJ
1.04	17,34	27	1.0	OBÝVACÍ POKOJ	OBÝVACÍ POKOJ	OBÝVACÍ POKOJ	OBÝVACÍ POKOJ
1.05	17,34	27	1.0	POKOJ	POKOJ	POKOJ	POKOJ
1.06	17,34	27	1.0	KUCHYŇKA	KUCHYŇKA	KUCHYŇKA	KUCHYŇKA
1.07	17,34	27	1.0	WC	WC	WC	WC
1.09	17,34	27	1.0	TERASA	TERASA	TERASA	TERASA

- LEGENDA KONSTRUKČNÍ ÚPRAV:**
- STAVBA DĚL KONSTRUKCE
 - NOVÉ KONSTRUKČNÍ ÚPRAVY AWC 100
 - NOVÉ KONSTRUKČNÍ ÚPRAVY PRŮMĚR 11,00-15,00M
 - NOVÉ KONSTRUKČNÍ ÚPRAVY 11,00-15,00M

AKTUALIZACE 08.03.2019

LUCSEMBURSKÁ

KAPITOLA: LUCSEMBURSKÁ PRÁVA
 INVESTOR: ING. ALOIS P. O. ŠKODU
 KRESLIL: ING. PETR ČELIBINA
 STAVĚNÍ: PRŮVODNÍ DOKUMENTACE
 DATUM: 03/2019
 MĚŘITKO: 1:50
 LOHMAN: A 2
 ZSEBEPŘEJE: BRNO
 NÁZEV VÝPISU: NÁVRH NABÝTKU
 A ZAŘÍZENÍ

BATIO DOM s.r.o., Týnská 21, Praha 1, 110 00
 tel.: +420224808222, email: info@batiodom.cz

VÝKRES **B.07**