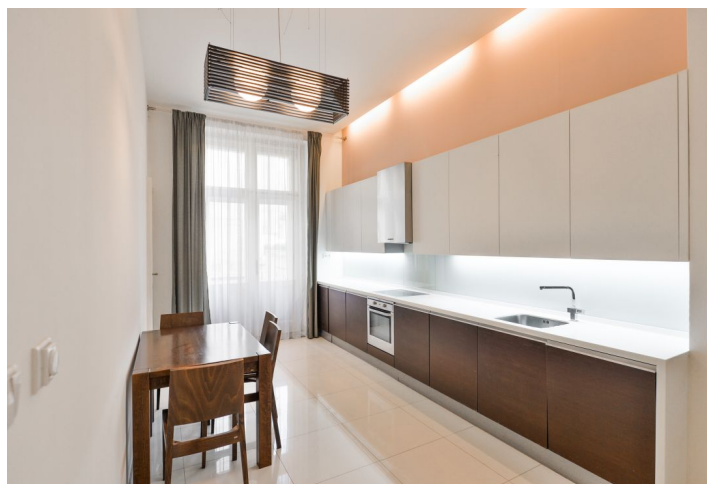




Apartment Two-bedroom (3+1)

Rented

118 m², Prague 1, Staré Město, Dušní





Apartment Two-bedroom (3+1)

Rented

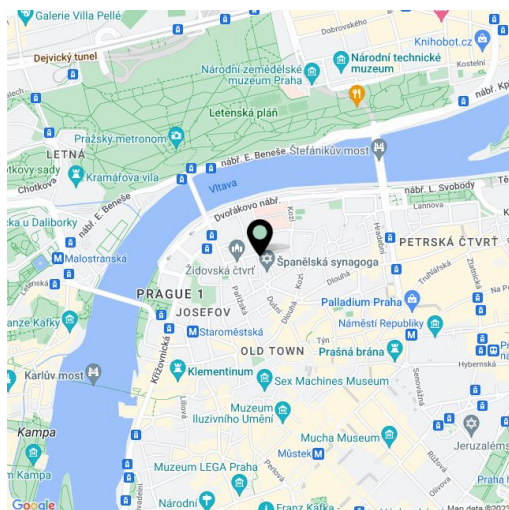
118 m², Prague 1, Staré Město, Dušní

Total area	120 m ²
Floor area*	118 m ²
Balcony	2 m ²
Parking	-
Cellar	Yes
PENB	G
Reference number	31922
Available from	Immediately

This elegant and furnished apartment with air-conditioning and balcony facing the courtyard is located on the 1st floor of a completely renovated classic apartment building with a new lift. The building is located on a popular street a few steps from the Old Town Square and Pařížská Street.

The layout consists of a living room, a kitchen with dining area and an entrance to the balcony, study, 2 bedrooms, bathroom, separate toilet, spacious entrance hall, and utility room.

Original preserved elements, parquet floors, wooden doors, three-meter ceilings, wooden casement windows with insulating glass, security door, air conditioning, gas boiler heating. Common building charges are included in the rent, gas and electricity is transferred to the tenant.



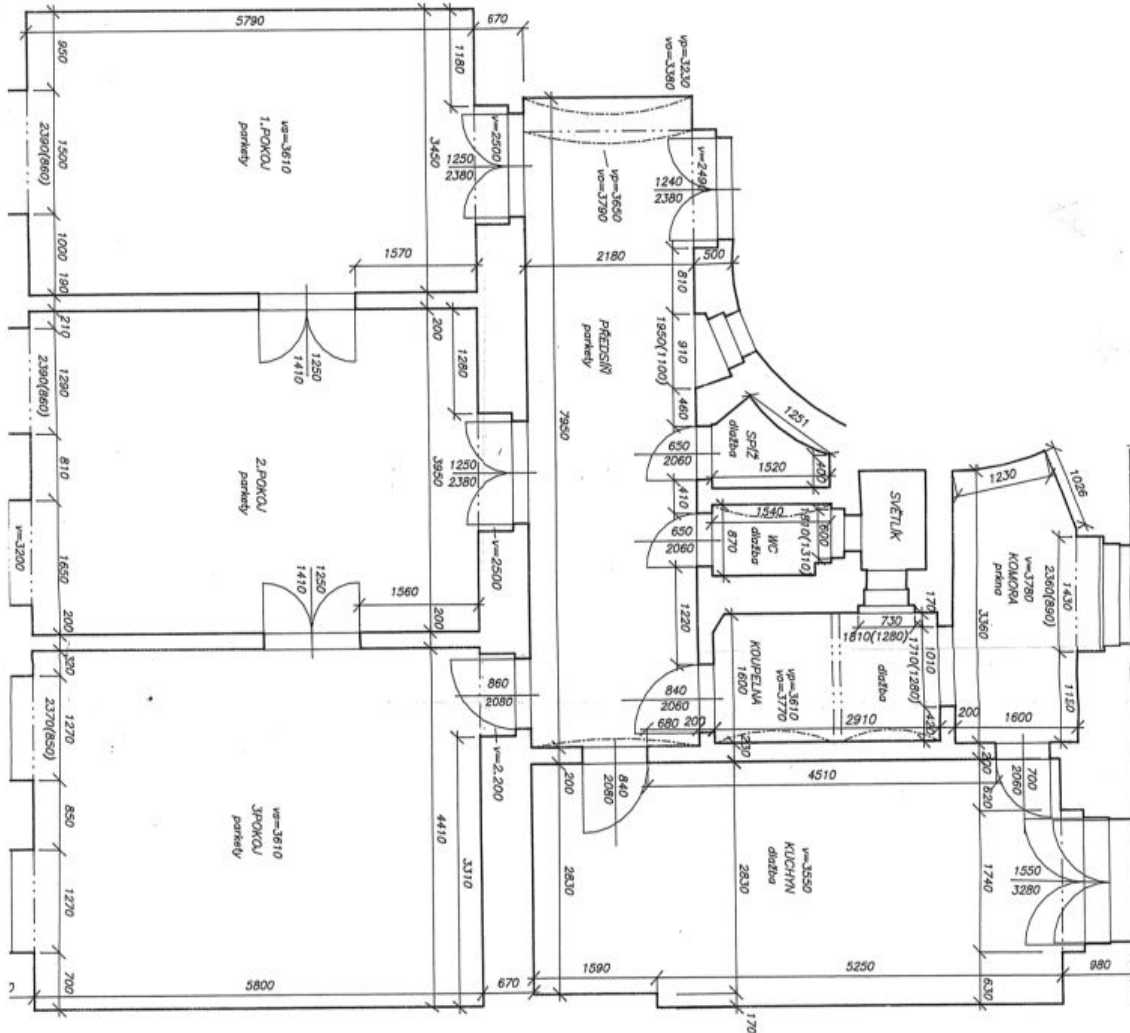
* Area of the unit according to the Civil Code. The area consists of the sum total area of the entire unit bounded by perimeter walls.



Apartment Two-bedroom (3+1)

Rented

118 m², Prague 1, Staré Město, Dušní



PLOCHY:

1. pokoj	21.13 m ²
2. pokoj	24.31 m ²
3. pokoj	26.75 m ²
kuchyn	20.79 m ²
předstř	17.33 m ²
koupelna	4.64 m ²
komora	5.81 m ²
spíž	1.18 m ²
WC	1.31 m ²
balcon	1.55 m ²