



## Apartment Two-bedroom (3+kk)

Rented

111 m<sup>2</sup>, Prague 6, Břevnov, Vodňanského





## Apartment Two-bedroom (3+kk)

Rented

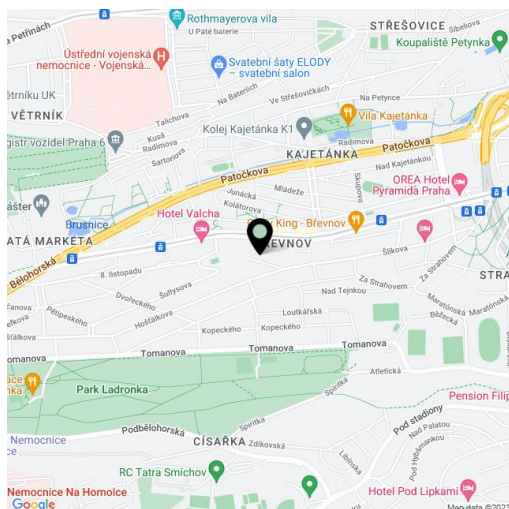
111 m<sup>2</sup>, Prague 6, Břevnov, Vodňanského

Total area	151 m <sup>2</sup>
Floor area*	111 m <sup>2</sup>
Terrace	40 m <sup>2</sup>
Parking	Garage parking.
Garage	Yes
Cellar	Yes
PENB	C
Reference number	31938
Available from	Immediately

Boasting 2 terraces and views of the Břevnov Monastery, this fully air-conditioned, semi furnished 2-bedroom apartment is on the third topmost floor of the Apartments Vodňanského project, a completely newly refurbished building in a desirable residential location in Prague 6. Located on a quiet street in close vicinity of Prague Castle, the Ladronka, Kajetánka, and Hvězda parks, in an area with quick access to the city center, the airport, and international schools, with full amenities incl. playgrounds, shops, and restaurants as well as a number of relaxation and sports opportunities.

The interior features a comfortable living room with a dining area, a fully fitted open plan kitchen, built-in storage, and **terrace** access. There are two separate bedrooms with built-in wardrobes and access to a second **shared terrace**, a bathroom (bathtub, walk-in shower, double sink, toilet), an additional separate toilet, and an entrance hall with built-in storage.

High-standard equipment, **hardwood floors**, tiles, security entry door, French windows, automatic outdoor blinds, central underfloor heating, washer, dryer, dishwasher, induction cooktop, microwave oven, **cellar**. One underground **garage parking** space is included. Service charges and utilities are billed separately. Available from October 2022.



\* Area of the unit according to the Civil Code. The area consists of the sum total area of the entire unit bounded by perimeter walls.



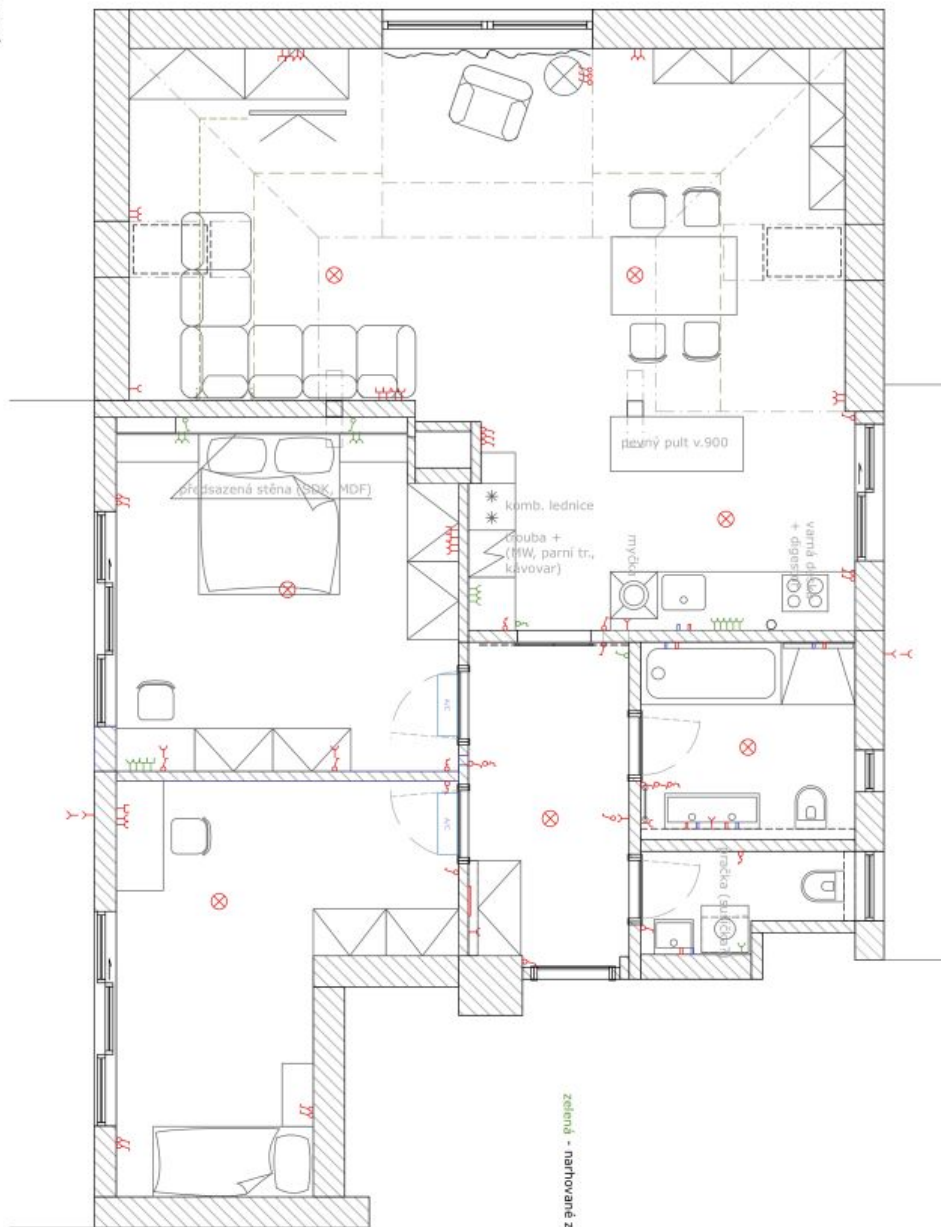
# Apartment Two-bedroom (3+kk)

111 m<sup>2</sup>, Prague 6, Břevnov, Vodňanského

Rented

návrh dispozice var-4

M 1 : 70 (A4)



zeleň - nahřované zrněly elektro