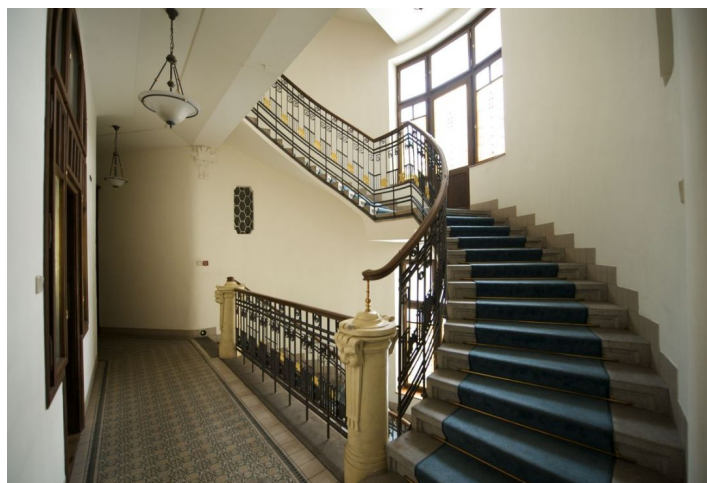
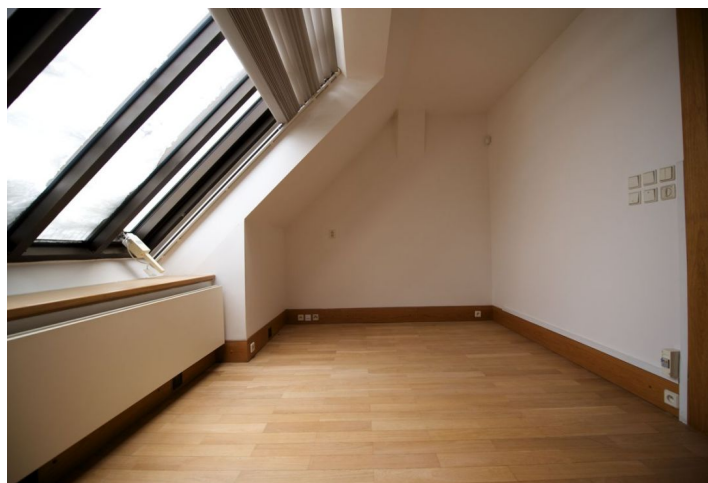




## Apartment Two-bedroom (3+1)

222 m², Prague 1, Staré Město, Brehova

€ 1 805 | CZK 45 000





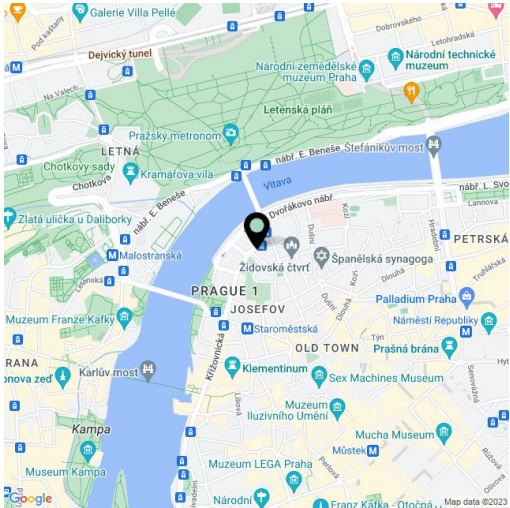
# Apartment Two-bedroom (3+1)

€ 1 805 | CZK 45 000

222 m², Prague 1, Staré Město, Brehova

Total area	222 m²
Parking	Parking available at the Rudolfinum public garage or the Intercontinental Hotel.
Cellar	-
Service price	14000 CZK Monthly
PENB	G
Reference number	3205
Available from	Immediately

Stylish living in one of the most lavish renovations in Prague. Spacious 2-bedroom 2-bathroom split-level attic apartment with a terrace situated on the 5th floor of a beautifully restored Art Nouveau building with 24-hour reception and lift. Located steps from the Vltava riverbank, just a 2-minute walk via the prestigious Pařížská Street to Old Town Square. With meticulously preserved original features and nice finishes in the building, the historic meets the contemporary and helps emphasize the exceptional atmosphere of the location. The lower level consists of a tiled entry hall with built-in wardrobes, fully equipped kitchen, huge living room with fireplace and brick wall, bedrooms with built-in wardrobes, bathroom with bath tub, shower bathroom, storage room. Upstairs is a large gallery with a small kitchenette, terrace access, walk-in closet/study and storage space. Features include air-conditioning, wood parquet and tile floors, security blinds, washer, dryer, dishwasher, microwave, Internet and satellite TV connection, audio entry phone, alarm. A few minute walk to Staroměstská metro and trams. Gas and electricity are billed separately.



\* Area of the unit according to the Civil Code. The area consists of the sum total area of the entire unit bounded by perimeter walls.