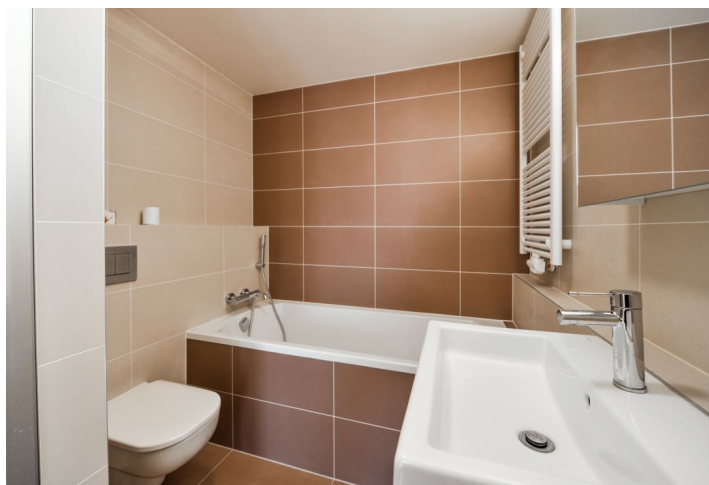
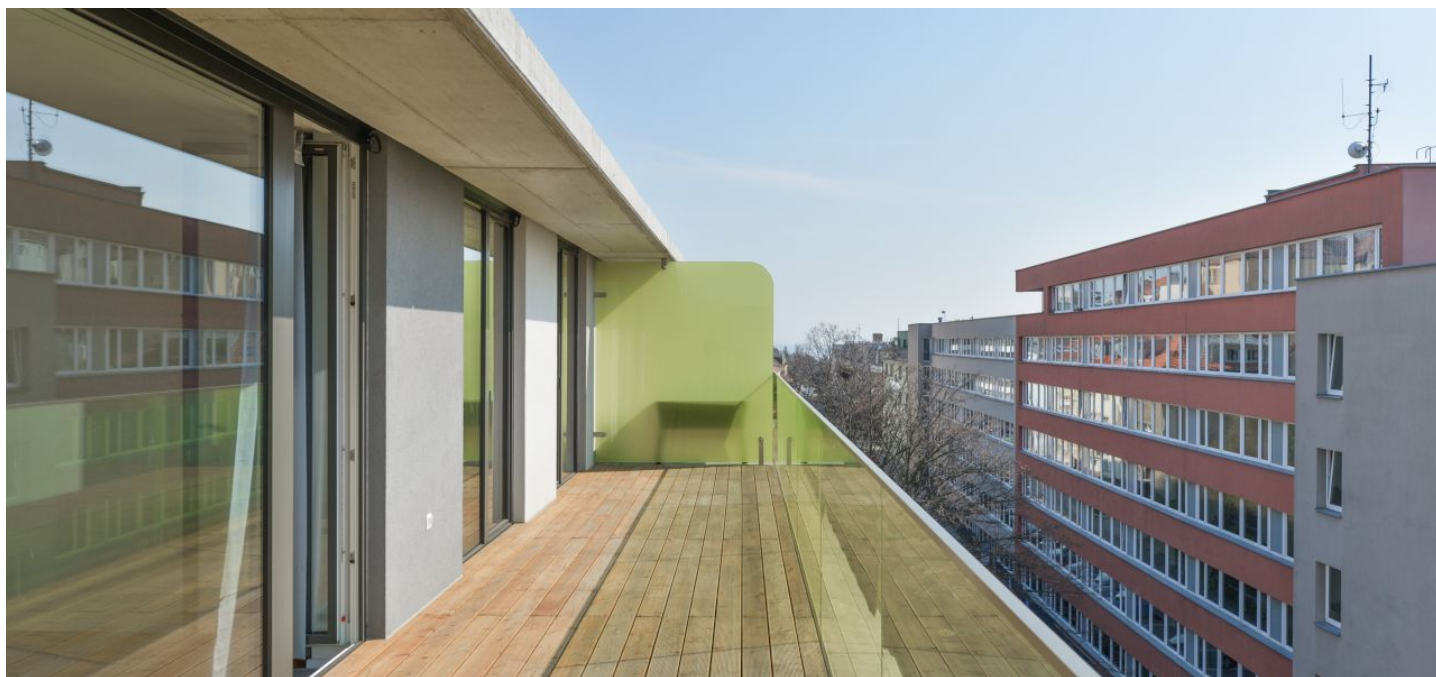




Apartment Two-bedroom (3+kk)

€ 1 199 | CZK 30 000

65 m², Prague 6, Břevnov, Ve Střešovičkách





Apartment Two-bedroom (3+kk)

€ 1 199 | CZK 30 000

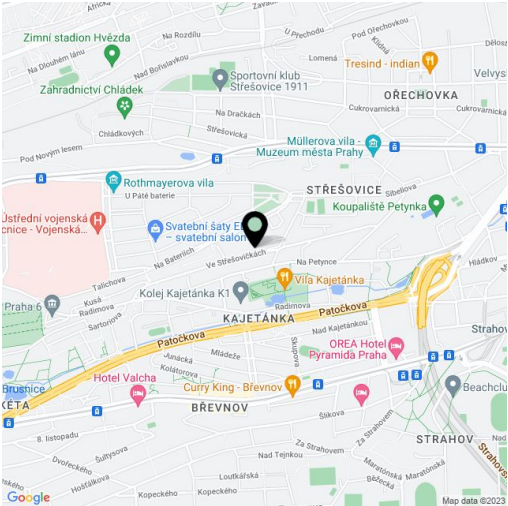
65 m², Prague 6, Břevnov, Ve Střešovičkách

Total area	90 m²
Floor area*	65 m²
Terrace	25 m²
Parking	Garage parking.
Garage	Yes
Cellar	Yes
PENB	B
Reference number	32084
Available from	Immediately

Boasting a 25 m² terrace offering green views of the residential neighborhood, this brand new, fully air-conditioned 2-bedroom flat is on the top fifth floor of a new residential building designed by the 4A architekti studio. The modern residence is set in a slope in the immediate vicinity of the historic part of Střešovice, Prague 6. Located near the Břevnovský Monastery, close to Kajetánka and Ladronka Parks and the Petynka outdoor swimming pool, within walking distance of the Prague Castle complex. Attractive location with excellent access to the city center, the airport and international schools, with full amenities in close vicinity.

The interior includes a living room with a fully fitted open plan kitchen, two separate bedrooms, a bathroom including both a bathtub and a walk-in shower plus a toilet, an additional separate toilet, and an entrance hall. The **terrace** is accessible from all main rooms.

Solid wood parquet floors, underfloor heating in the bathroom, security entry door, large French windows bringing in plenty of light, new appliances, washer / dryer, dishwasher, microwave oven, **cellar**, lift, barrier free entry and bike storage in the building. The apartment can be equipped with furniture at a higher rent. One **garage parking** space is included. Service charges including heating and water CZK 5300 per month. Electricity is billed extra and will be transferred to the tenant.



* Area of the unit according to the Civil Code. The area consists of the sum total area of the entire unit bounded by perimeter walls.