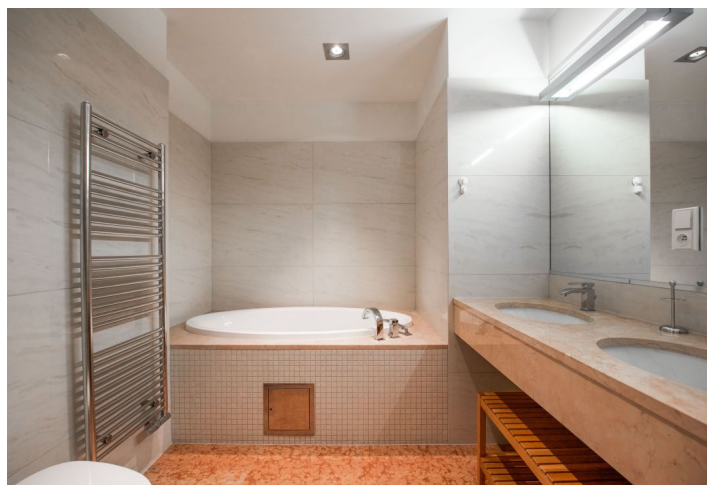
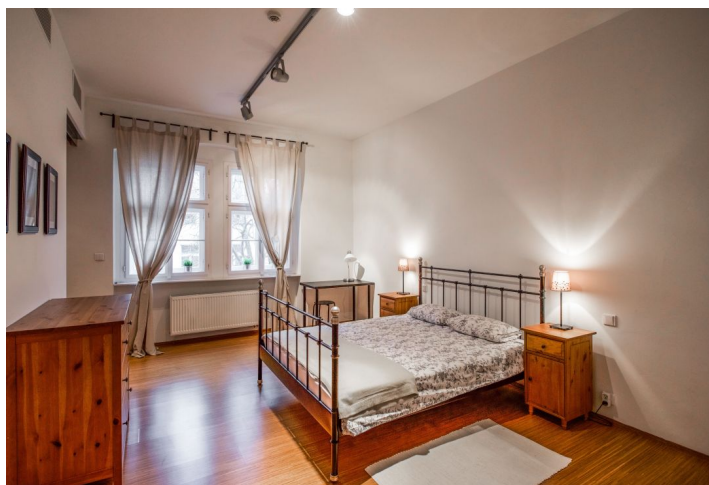




## Apartment One-bedroom (2+kk)

Sold

60 m<sup>2</sup>, Prague 1, Nové Město, Truhlářská





## Apartment One-bedroom (2+kk)

**Sold**60 m<sup>2</sup>, Prague 1, Nové Město, Truhlářská

Total area	60 m <sup>2</sup>
Parking	-
Cellar	-
Service price	7 300 CZK monthly
PENB	G
Reference number	32185

This beautifully renovated apartment with air conditioning and windows that face a quiet courtyard is located on the 3rd floor of a sensitively refurbished historic apartment building with a new elevator and elegant common areas. The building stands on a side one-way street leading to náměstí Republiky Square.

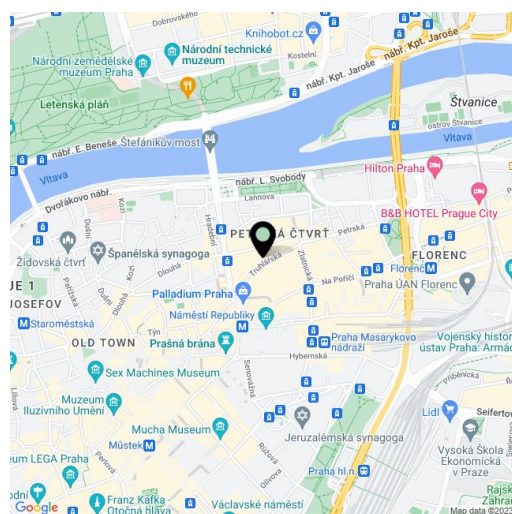
The interior consists of a bright corner living room with a kitchen, a bedroom with an en-suite bathroom (bathtub, 2 sinks, toilet with a bidet shower), an entrance hall, and a guest toilet.

**High quality materials and equipment** were used during the reconstruction. Facilities include **built-in air conditioning, bamboo flooring, heated tiles** in the bathroom, built-in wardrobes, and a **Sykora kitchen**. Central gas heating. The safety of the residents is ensured by a videophone, security equipment with the possibility of connecting it to a central security station, and CCTV in the house. There are several possibilities to rent a covered parking space.

Metro stations, tram stops, the **Palladium** shopping center, the Kotva department store, and the **Na Příkopě** shopping boulevard are all in the immediate vicinity. Within walking distance are **Wenceslas Square and Old Town Square**, where there is a large number of restaurants specializing in cuisine from all over the world, shops, banks, offices, health services, and sports facilities. **Lannova Park or the large Letná Park** offer urban greenery with beautiful views of the city skyline.

The apartment is rented by the end of March 2020.

Interior 60.86 m<sup>2</sup>.



\* Area of the unit according to the Civil Code. The area consists of the sum total area of the entire unit bounded by perimeter walls.



## Apartment One-bedroom (2+kk)

60 m<sup>2</sup>, Prague 1, Nové Město, Truhlářská

Sold

