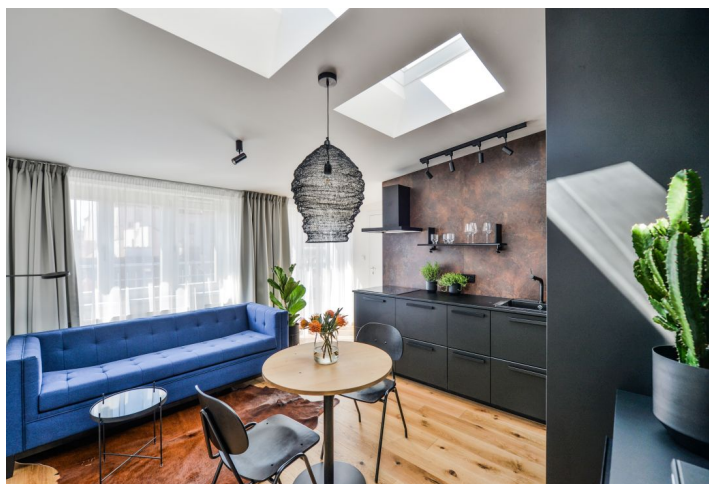




Apartment One-bedroom (2+kk)

Rented

43 m², Praha 7, Holešovice, Heřmanova





Apartment One-bedroom (2+kk)

Rented

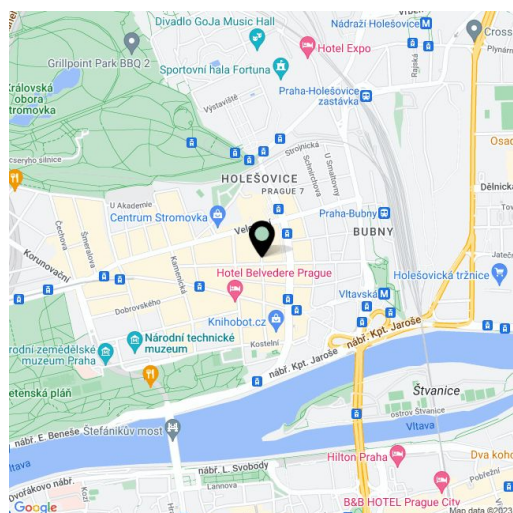
43 m², Praha 7, Holešovice, Heřmanova

Total area	57 m ²
Floor area*	43 m ²
Terrace	14 m ²
Parking	-
Cellar	Yes
Service price	Service charges and water for one person CZK 2,000/month. Gas and electricity - transferred to the tenant.
PENB	C
Reference number	32272
Available from	Immediately

Boasting a 14 m² south-facing terrace, this air-conditioned attic apartment, fully equipped with design furniture, is set on the 5th top floor of a completely refurbished residential building with a new elevator and preserved original details. Nicely located within walking distance of two popular Prague parks - Stromovka and Letná. A trendy area with full amenities, numerous restaurants, bistros and cafes, a two min. walk from a tram stop with quick connections to the city center and Hradčanská and Vltavská metro stations. A highly sought-after location within easy reach of the airport and international schools in Prague 6.

The interior features an air-conditioned living room with a fully fitted open plan kitchen, dining area, and access to the terrace facing the quiet green back yard, and one bedroom with ample built-in wardrobes and storage. There is a bathroom including a walk-in shower and a toilet, and an entrance hall with more built-in wardrobes.

Hardwood floors, decorative tiles, security entry door, light tunnels, gas boiler, washer, dryer, dishwasher, microwave oven, sofa bed, garden furniture, cellar.



* Size of the unit according to the Housing Act.
The area consists of the sum total of the internal area of every room.