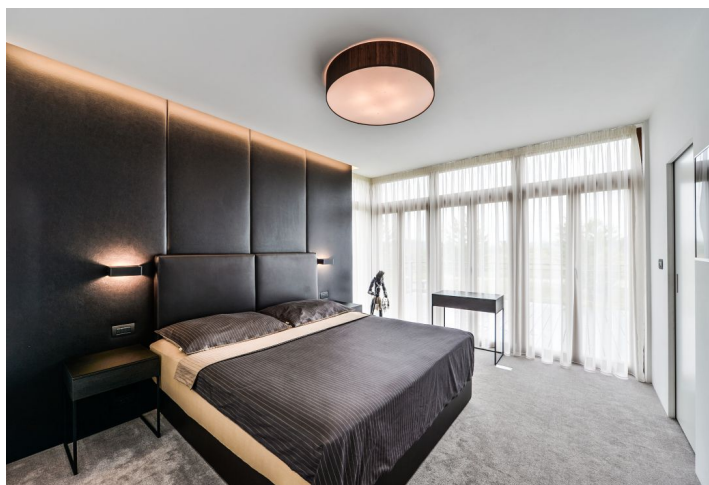




House Three-bedroom (4+kk)

Sold

144 m², Prague 10, Benice, Jenská





House Three-bedroom (4+kk)

Sold144 m², Prague 10, Benice, Jenská

Plot	682 m ²
Foot print	88 m ²
Garden	594 m ²
Parking	Yes
Garage	Yes
Cellar	-
PENB	A
Reference number	32403

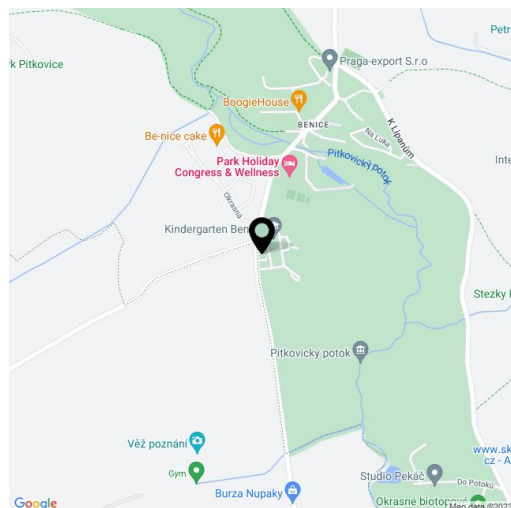
This newly built terraced family house with a large southeast garden and a designer interior is located on a dead-end street lined with trees on the edge of a residential area. The district of Benice allows you to live in the peaceful environment of the Botič-Milíčov nature park yet in an area with a full infrastructure.

The ground floor consists of a living room with a kitchen, a dining room, and access to the garden terrace, a utility room, a toilet, and a garage. Upstairs, there is a master bedroom with a walk-in closet and access to the terrace, a children's bedroom, a study with a **balcony**, and a bathroom with a toilet, bath, and shower.

This low-energy house from 2014 boasts an imaginative, modern interior design and **high quality materials**. American walnut and troweled epoxy floors, wall-to-wall carpets in the bedrooms. Facilities include underfloor heating, a smart home system, **wooden triple-glazed Euro windows** with exterior blinds, a projection screen, a sound system and a home cinema, a biofuel fireplace, a Jablotron security system, and a preparation for air conditioning. The custom-made kitchen has a Technistone worktop, quality hinges, Blum drawer slides, and Samsung and Whirlpool appliances. The purchase price includes all interior equipment. The large grassy plot is irrigated by a rainwater tank. The heating is with a pump (Stiebel Eltron boiler). Parking is available in the **garage** and on **1 outdoor parking space**.

There is a **wellness and fitness center**, a restaurant, tennis courts, and a swimming pool in close proximity. Other civic amenities are in neighboring Uhříněves, where there is a kindergarten and an elementary school, a post office, shops, doctors' offices, restaurants, a cafe, and other services. There is a bus connection to the Háje metro station or the Uhříněves train station, with direct and frequent links to the Main Railway Station. The area is surrounded by a beautiful natural landscaped park with bike trails and hiking paths.

Useable area 144.32 m² - interior 110.4 m², garage 16.7 m², terraces 21.19 m², built-up area 88 m², garden 594 m², plot 682 m².

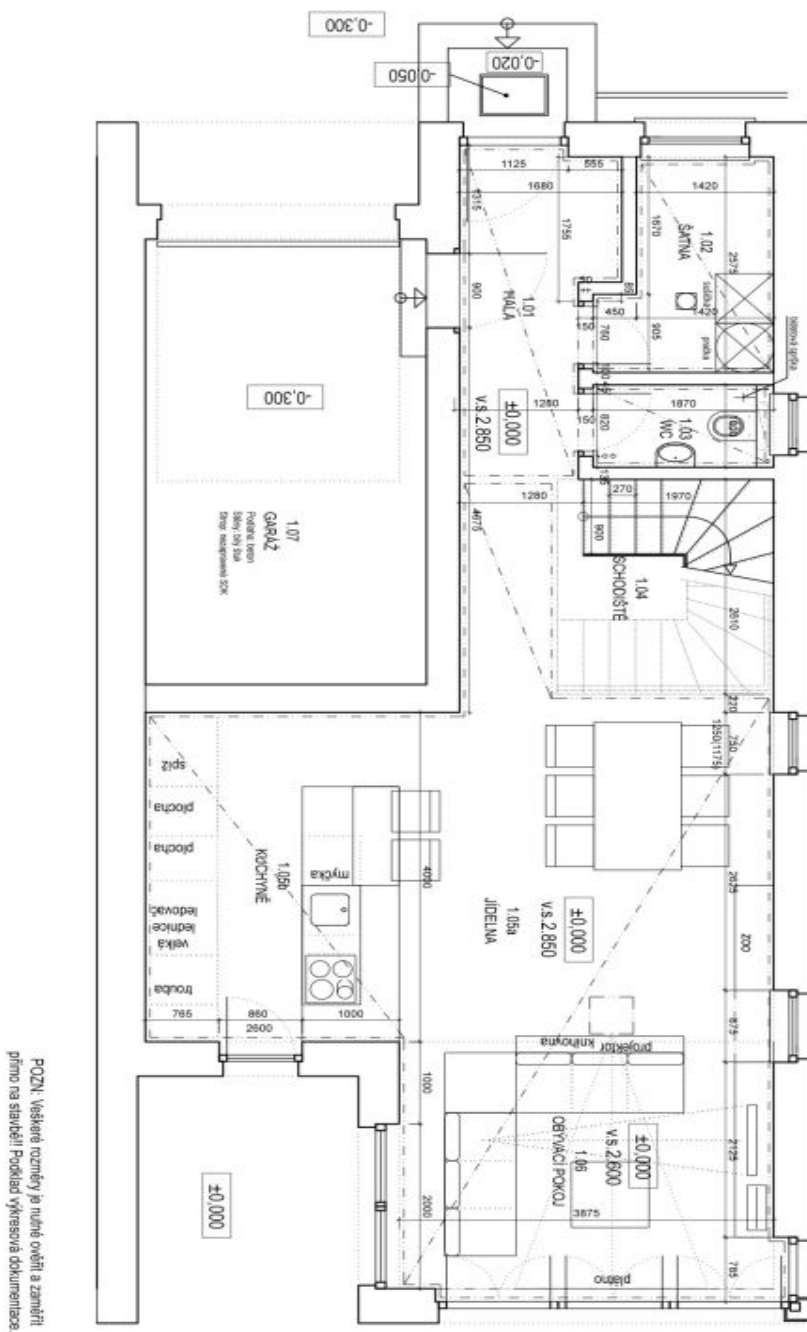




House Three-bedroom (4+kk)

144 m², Prague 10, Benice, Jenská

Sold



POZN: Všechné rozměry je nutné ověřit a zaměřit přímo na stavbě!!! Povšimněte výškových důležitostí.

LEGENDA:

1.01	HALA	5,69
1.02	SÁTNĚ	4,15
1.03	WC	1,89
1.04	KUCHYŇE	10,50
1.05	SCHODIŠTĚ	5,84
1.06	OBÝVACÍ	31,57
1.07	GARÁŽ	16,07

ADRESA: BNC
OCHRANOVSKÁ
PRAHA

OBČAN: PUDORYS TNP

MOBILNĚ: _____

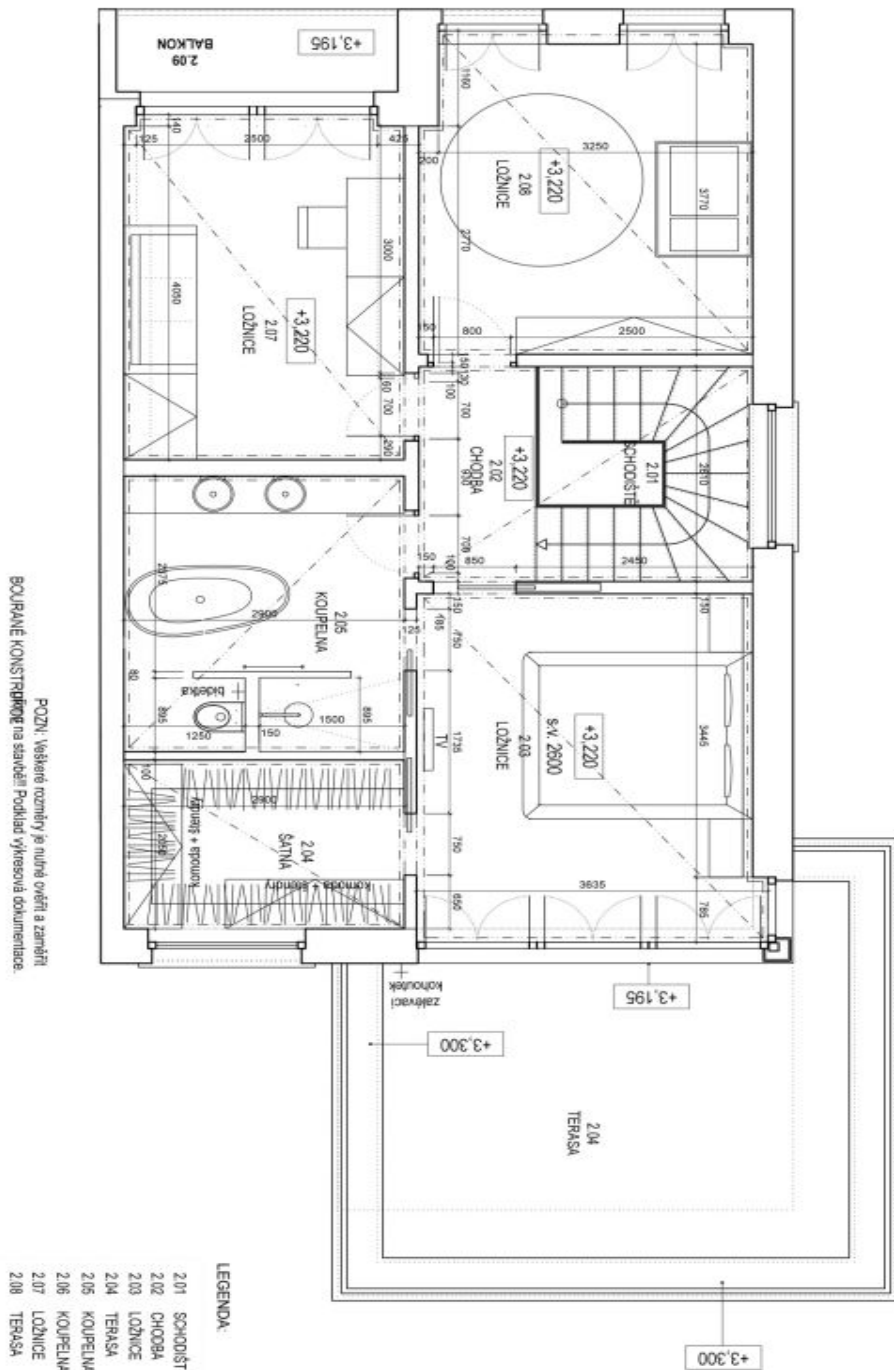
VYKRES C.: 01 MĚRITKO: 1:50 DATUM: 23/08/2014



House Three-bedroom (4+kk)

Sold

144 m², Prague 10, Benice, Jenská



LEGENDA:

2.01	SCHODIŠTĚ	5,84
2.02	CHODBA	3,39
2.03	LOŽNICE	19,90
2.04	TERASA	17,85
2.05	KOUPELNA	4,38
2.06	KOUPELNA	5,36
2.07	LOŽNICE	12,09
2.08	TERASA	3,34

ADRESA: BNC
OCHRANOVSKÁ
PRAHA

OBRAH
PUDORYS ZNP

DETAIL:
MOBILIAR

VÝKRES Č.: 02
MĚRITKO: 1:50
DATUM: 23/08/2014

architects

www: oooox.com, e-mail: oooox@ooox.com, tel: +420 603 703 475, +420 737 039 696, address: OOOOX s.r.o. Nábřeží Obřevy 31, 100 00 Praha 6 - Dejvice