



Office building

Prague 1, Staré Město, Parizska

Ask for price





Office building

Prague 1, Staré Město, Parizska

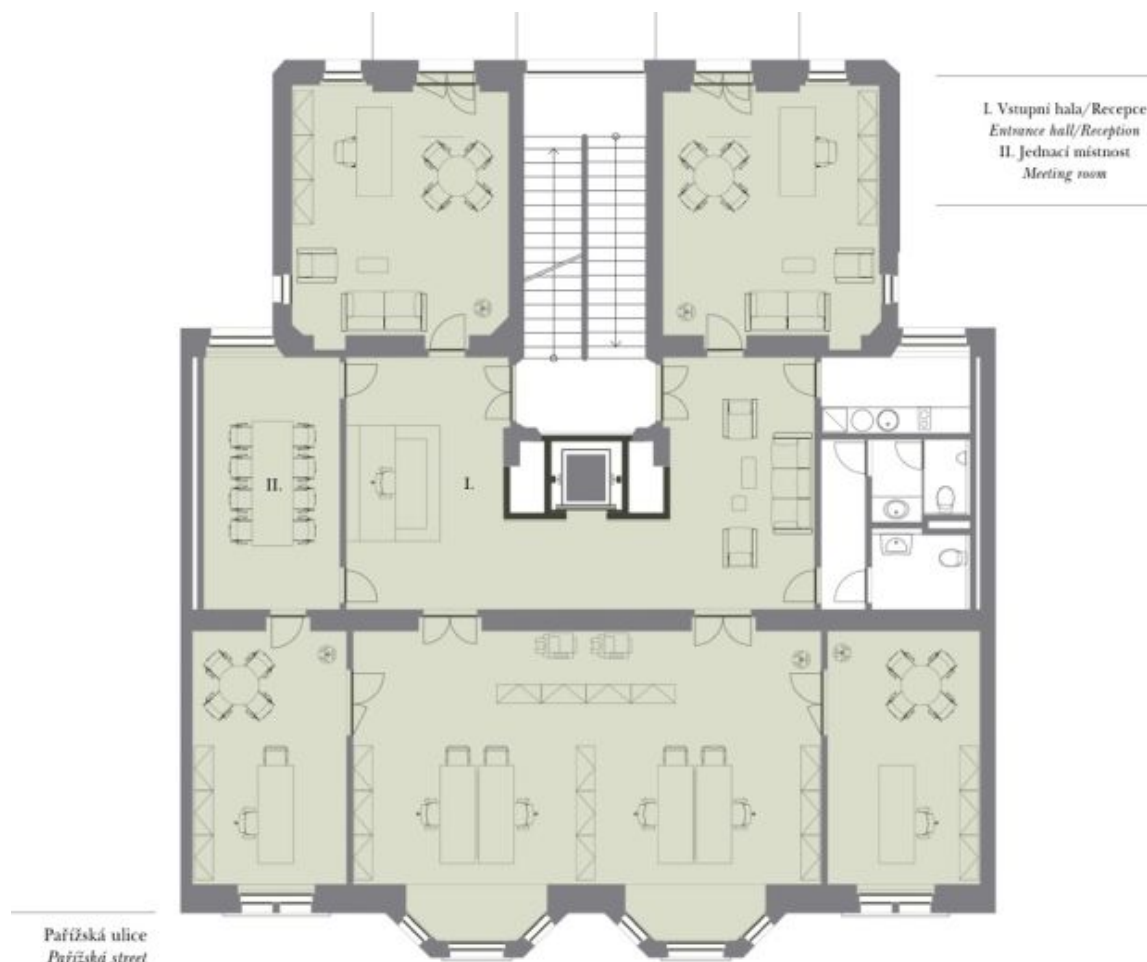
Ask for price

| | |
|-------------------------|----------------------|
| Total building area | 1 200 m ² |
| Tenant consumption | — |
| Parking | Yes |
| Parking service charges | — |
| Parking ratio | — |
| Certification | — |
| PENB | G |
| Reference number | 32427 |

Office premises in an attractive location in a completely refurbished building with a lift located on Pařížská street, one of the most prestigious streets in Prague, steps from the Old Town Square, amidst luxurious shops and restaurants, in the historic and cultural center of the city. Features include internal partitioning, wooden parquet floors, heating system (floor convectors plus standard radiators), complete high voltage electro wiring with sockets and switches, lighting in suspended ceilings, air-conditioning system including terminals, W.C.s and preparation for the kitchenette installation. Parking available in the nearby Intercontinental Hotel garages at CZK 7500/ps/month. Rental price EUR 26/m²/month. Prices are listed without VAT. Lessee pays no commission.

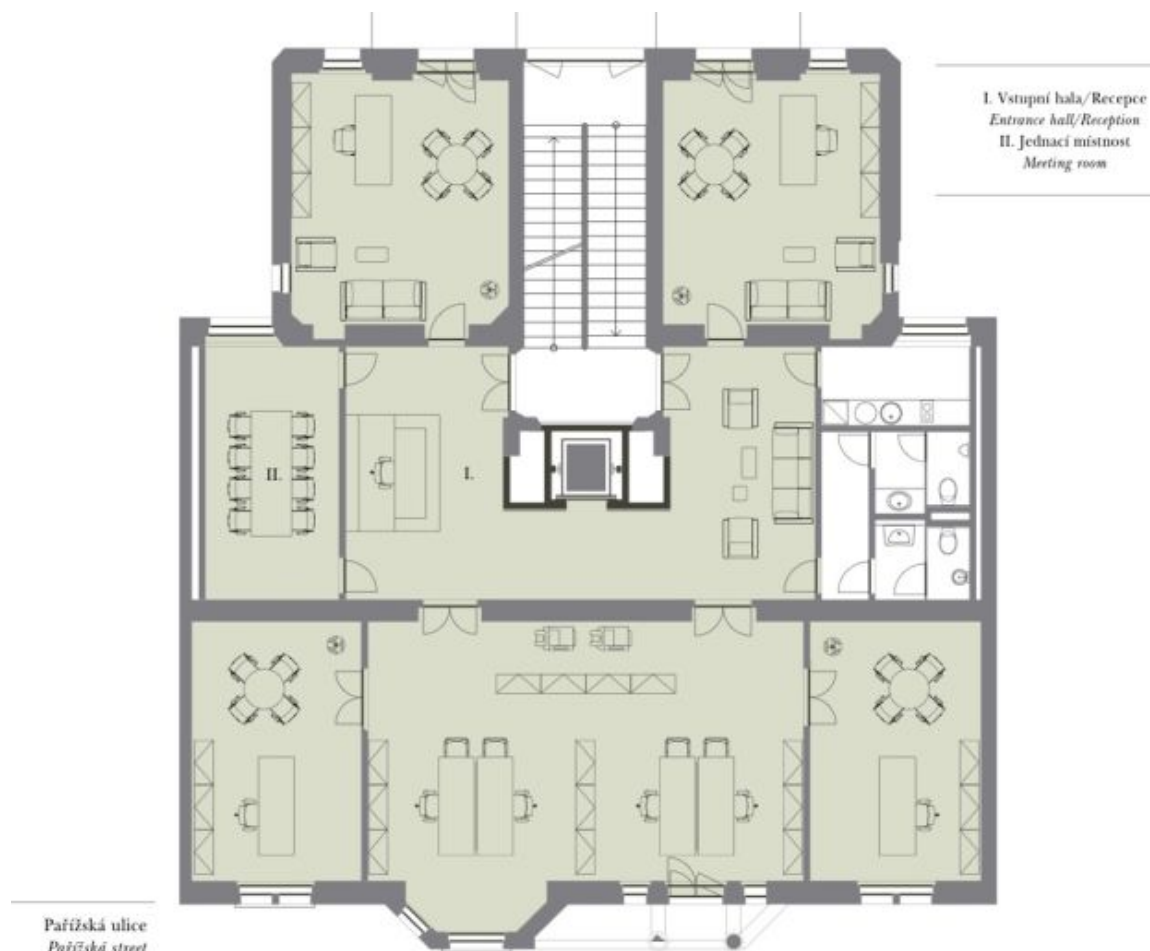
**Office building**

Prague 1, Staré Město, Parizska

Ask for price**KANCELÁŘSKÉ PROSTORY**
OFFICE SPACEPronajimatelná plocha
*Leaseable area***245**V METRECH
ČTYŘEKVNÍCH
IN SQMNadzemní podlaží
*Floor 3, 4***03.- 04.**

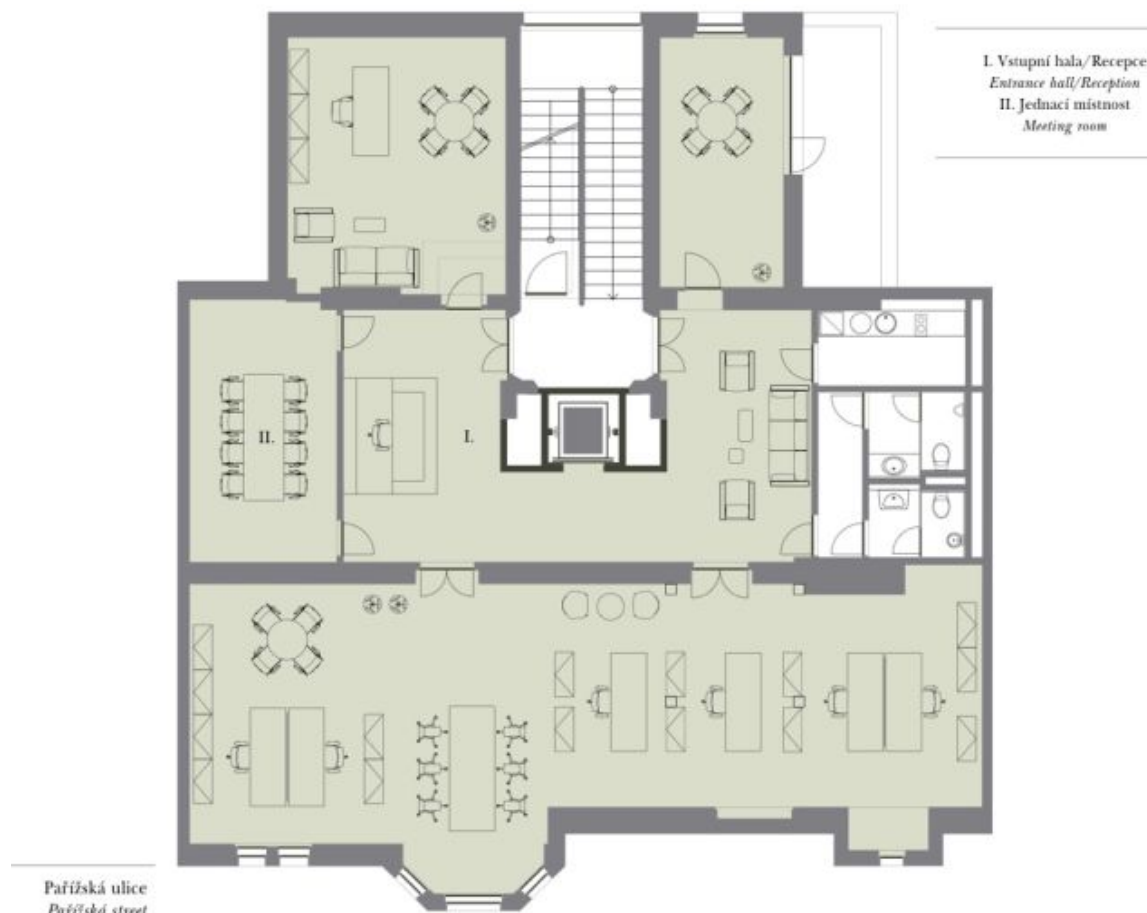
**Office building**

Prague 1, Staré Město, Parizska

Ask for price**KANCELÁŘSKÉ PROSTORY**
OFFICE SPACEPronajímatelná plocha
Leasable area**238**V METRECH
ČTYŘEČNÍCH
IN SQMNadzemní podlaží
Floor 5**05.**

**Office building**

Prague 1, Staré Město, Parizska

Ask for price**KANCELÁŘSKÉ PROSTORY**
OFFICE SPACEPronajímatelná plocha
Leasable area**216**V METRECH
ČTYŘECHEM
IN SQMNadzemní podlaží
Floor 6**06.**