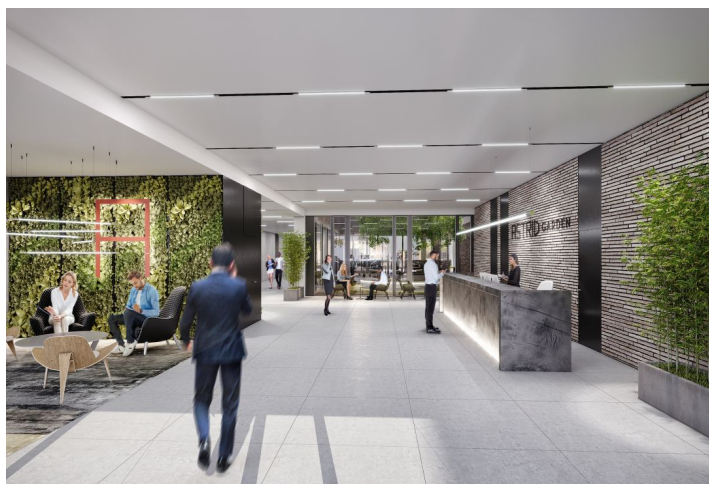




Office space

Prague 7, Holešovice, Dělnická

€ 15.50 / m² | CZK 389 / m²

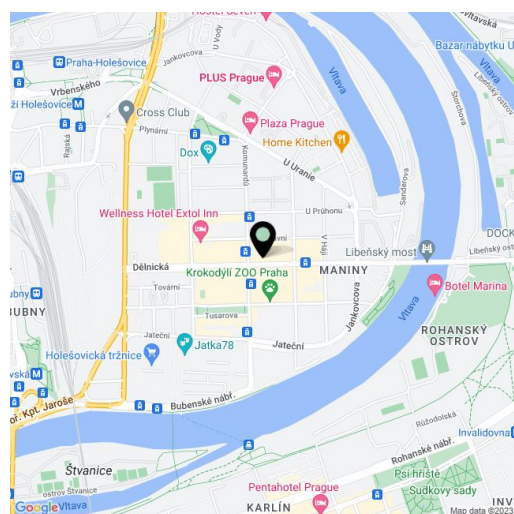


**Office space**

Prague 7, Holešovice, Dělnická

€ 15.50 / m² | CZK 389 / m²

Service price	90 CZK monthly per m ²
Available area	978 m ²
Cellar	-
Parking	EUR 115 / ps / month
PENB	B
Reference number	32438



Office premises for lease in a new project in the heart of Holešovice in Prague. The combination of a unique architectural design and modern technology, with large-format windows overlooking the courtyard, provides plenty of light and gives the space a pleasant atmosphere. Tenants will be able to use a variety of coworking spots located not only in the interior of the building or the green atrium, but also on the common green rooftop terrace. There will also be a modern and spacious bike room with fully equipped facilities, a dishwasher, and convenient bicycle racks.

Location:

This popular administrative and residential area features a wide range of services and a rich cultural life. You will find a variety of excellent restaurants and cafes, shops, as well as medical facilities and banks. The building is easily accessible by car and public transport – it is close to the Nádraží Holešovice and Vltavská metro stations (line C), and there are several tram stops close-by. Easy access to the main thoroughfares, including the entrance to the D1 and D8 highways (towards Berlin).

Features and services:

- central reception
- building security
- 24/7 access to the building
- flexible layouts
- 2 elevators
- raised floors
- floor boxes
- optical data connection
- backup power source
- modern cooling system
- heating radiators
- heat pumps
- openable windows
- security access system
- CCTV
- CO2 detection
- bicycle and dishwasher

Available from Q2 2021.

Rental and service charges listed without VAT. Lessee pays no commission.



Vzorový space plan 3NP



421 m²



313 m²



220 m²

