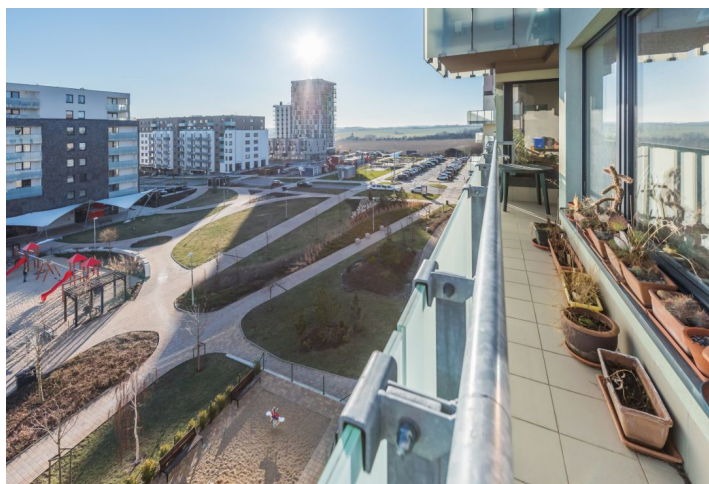




## Apartment Three-bedroom (4+1)

Sold

128 m<sup>2</sup>, Prague 5, Stodůlky, Svitákova





## Apartment Three-bedroom (4+1)

**Sold**128 m<sup>2</sup>, Prague 5, Stodůlky, Svitákova

Total area	156 m <sup>2</sup>
Floor area*	128 m <sup>2</sup>
Balcony	5 m <sup>2</sup>
Loggia	23 m <sup>2</sup>
Parking	700 000
Garage	Yes
Cellar	Yes
Service price	8 030 CZK monthly
PENB	C
Reference number	32443

This modern family apartment with a terrace, a balcony, and 2 parking spaces is located on the 4th floor of a new building with an elevator and an underground garage. The building is just a minute's walk from the Stodůlky metro station. It stands in a neighborhood with an excellent infrastructure. It is a connection of 2 apartments by the developer.

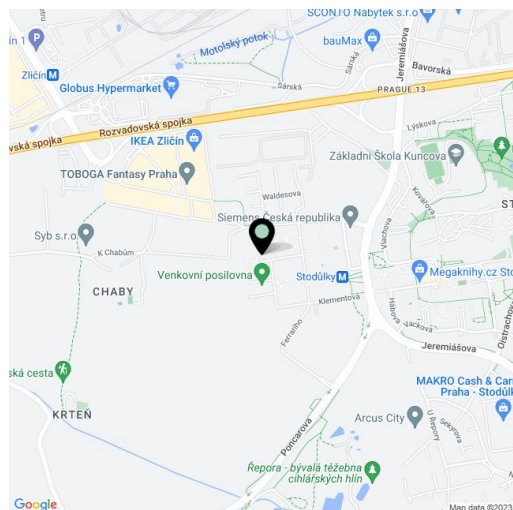
The layout consists of a living room with a study and a **terrace**, a kitchen with a dining room and a **balcony**, 3 separate bedrooms (1 with access to the terrace), a cloakroom, 2 bathrooms with toilets, a guest toilet, and an entrance hall.

Facilities include large-format windows with **exterior window blinds**, laminate floors, tiles, built-in wardrobes and additional storage, security entry doors, and security systems. The price includes **2 garage parking spaces** and a **cellar**. Heating is from the central boiler room.

In the new residential area, there is a central square with shops, cafes, and other services, a playground, a park and a **pond** with a wooden footbridge, and there is also an entrance to the Stodůlky metro station (line B). There is a large shopping center in the neighborhood. The location has a perfect connection to the D5 highway and the Prague Ring Road. You can reach the Řepora open-air museum and the **forest park in the Dalejské Valley** by a bike path or hiking trail.

Interior 127.8 m<sup>2</sup>, loggia 23.4 m<sup>2</sup>, balcony 5.2 m<sup>2</sup>.

In addition to regular property viewings, we also offer **real time video viewings** via WhatsApp, FaceTime, Messenger, Skype, and other apps.



\* Area of the unit according to the Civil Code. The area consists of the sum total area of the entire unit bounded by perimeter walls.



## Apartment Three-bedroom (4+1)

Sold

128 m<sup>2</sup>, Prague 5, Stodůlky, Svitákova

### DISPOZIČNÍ ZMĚNY - BYTY B2/406 A B2/407

