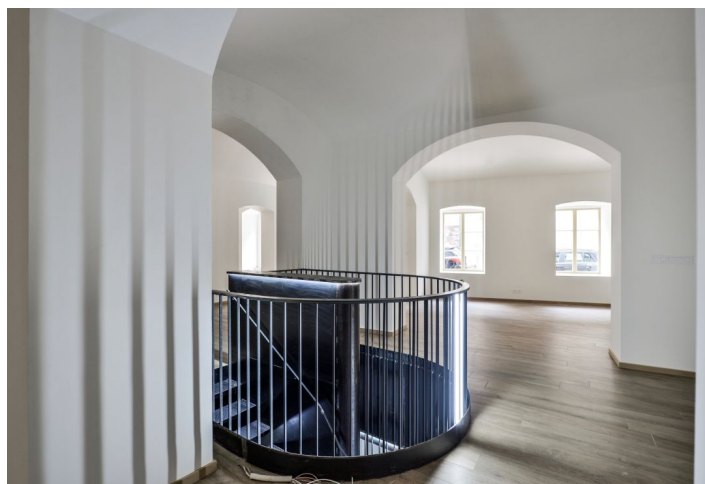




## Retail space

Praha 1, Nové Město, Truhlářská

Rented





## Retail space

Praha 1, Nové Město, Truhlářská

**Rented**

Available area	379 m <sup>2</sup>
Parking	-
PENB	G
Reference number	32498

Retail space for lease on the ground floor and basement of a reconstructed building in the center of Prague near náměstí Republiky Square. The building has a Classicist facade and has been completely reconstructed.

The space is made up of a 202 sq. m. ground floor with a street-level entrance and a basement of 177 sq. m. A designer staircase connects both floors. The unit can serve as a showroom, sales office, or beauty salon.

### Location:

Wenceslas Square, historic Old Town Square, and the Vltava River are just a few minutes' walk away. In the vicinity of all amenities, including a number of restaurants, cafes, luxury hotels, and shops. The Palladium Shopping Center is mere steps away. Excellent accessibility by car and public transport - close to tram stops and the Florenc (lines C and B) and Náměstí Republiky (line B) metro stations. Easy connection to the D8 highway, inner Prague Ring Road, and the city center.

### Features and services:

- Ceramic floor tiles
- Solid wood floors in the basement
- Designer industrial staircase
- Windows with good heat and noise insulation
- Ceiling cooling
- Capillary heating

### Available immediately.

Rental and service charges are listed without VAT. Lessee pays no commission.

