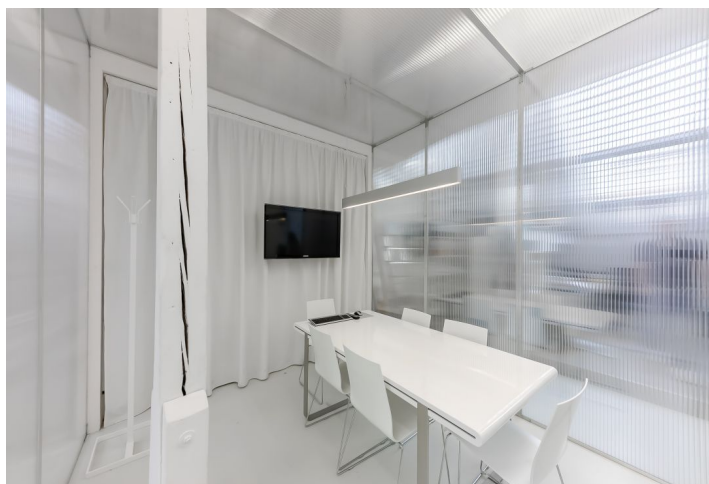




## Office building

Prague 10, Vinohrady, Korunní

Rented





## Office building

Prague 10, Vinohrady, Korunní

Rented

Service price	120 CZK monthly per m <sup>2</sup>
Tenant consumption	—
Parking	Yes
Parking service charges	—
Parking ratio	—
Certification	—
PENB	G
Reference number	32516

Former Royal Brewery historic building offers office space for lease. The premises are open-plan and have a stylish vaulted ceiling with decorative columns. Large windows provide plenty of natural daylight. Entrance to the unit is possible from the street through an elegant reception or the wheelchair accessible entry from the courtyard through a private terrace. There is also a courtyard with a relaxation zone with fountains and greenery.

### Location:

This complex of new buildings in Vinohrady perfectly reflects the cosmopolitan nature of the city and at the same time respects the privacy of its residents. The building is situated on a busy street, two tram stops from the Jiřího z Poděbrad and Flora metro stations (line A). There are also bus stops a few minutes' walk away. The surrounding area offers all civic amenities. There is a café with a restaurant, a supermarket, and a fitness center.

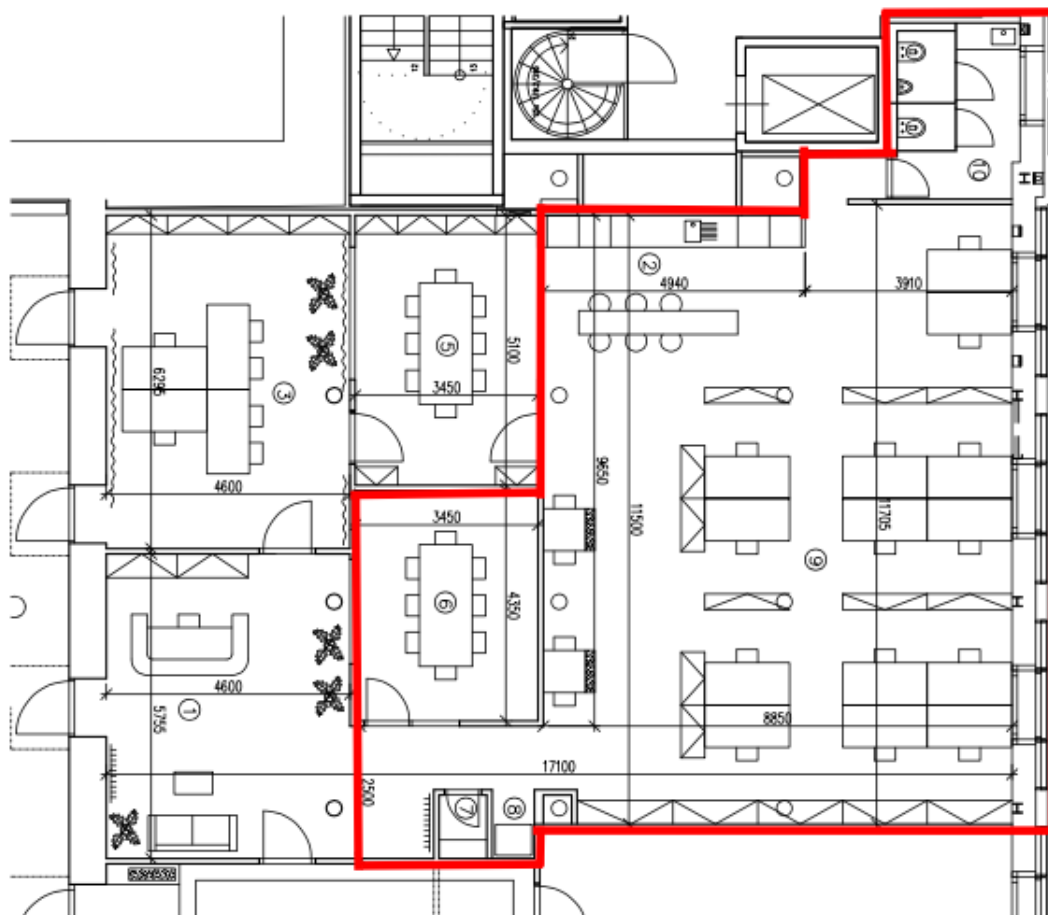
### Features and services:

- central reception
- 24/7 security
- security system
- flexible office layout
- air conditioning
- sanitary facilities and kitchenette
- heating and air conditioning
- lighting and all electrical wiring
- high-speed internet
- terrace
- warehouse space and server room
- meeting and training rooms, business lounge
- on-site restaurants and fitness facilities
- parking in underground garages
- bicycle stand

Rental and service charges listed without VAT. Lessee pays no commission.



přízemí / ground floor





Office building

Prague 10, Vinohrady, Korunní

Rented

