



Office space

Praha 1, Nové Město, Národní

€ 15.00 / m² | CZK 380 / m²



**Office space****€ 15.00 / m² | CZK 380 / m²**

Praha 1, Nové Město, Národní

Service price	118 CZK monthly per m ²
Available area	758 m ²
Cellar	-
Parking	Yes
PENB	G
Reference number	32590

Office space for lease on the 3rd floor (attic) of a unique historic building that is part of the Early Baroque St. Ursula church complex, which architect Kilián Ignác Dientzenhofer (Břevnov Monastery, Church of St. John of Nepomuk, the Klementinum Mirror Chapel, the Invalidovna building, etc.) helped design. Tenants will have access to a courtyard garden – a peaceful oasis in the busy city center. There is a wide selection of restaurants and cafes in the area. Excellent transport accessibility. Several parking spaces are reserved for tenants on Voršilská Street.

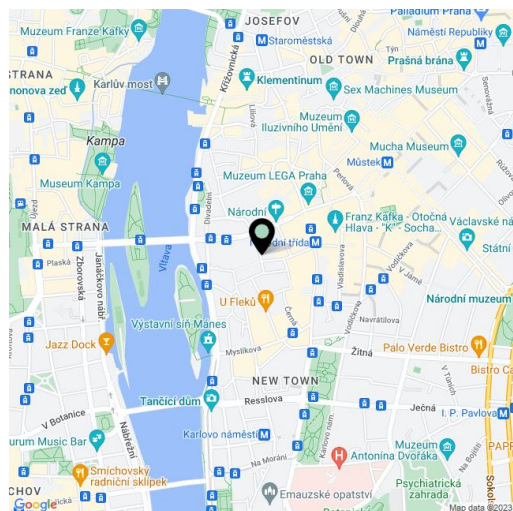
Location:

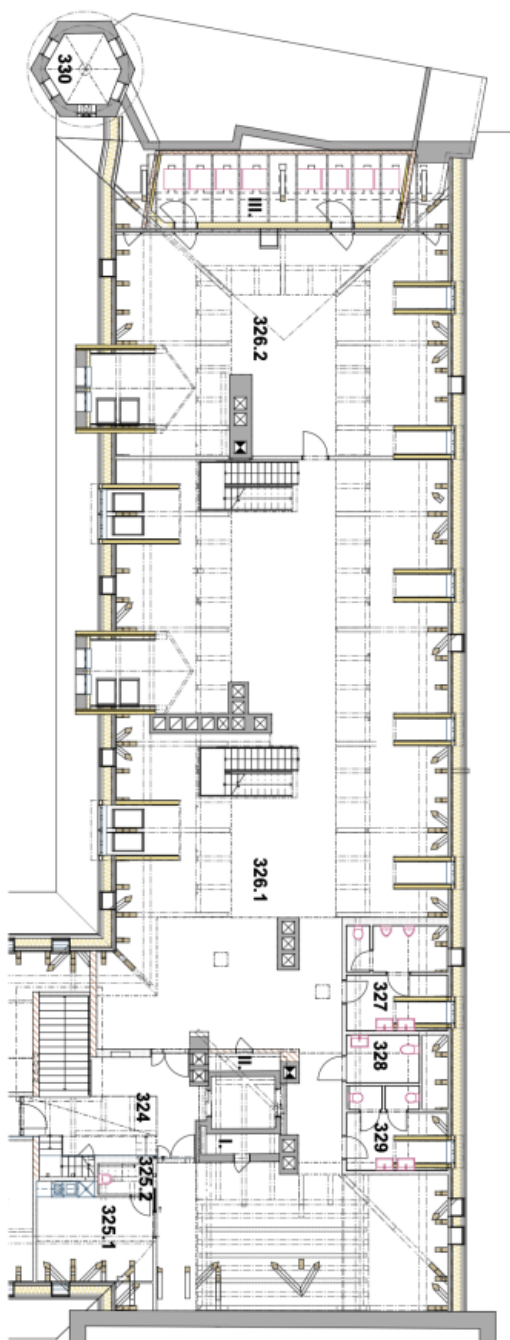
Excellent accessibility by car and public transport, a few steps from the Narodni trida or Mustek tram stop and metro stations (line B). Within walking distance of the National Theater, Vltava embankment, Žofín Island, and Charles Bridge.

Features and Services:

- Air conditioning
- Vinyl floors
- Low-voltage wiring
- Elevator
- ESS, EPS
- Home phone
- Parking on Voršilská Street
- Kitchenette and toilets

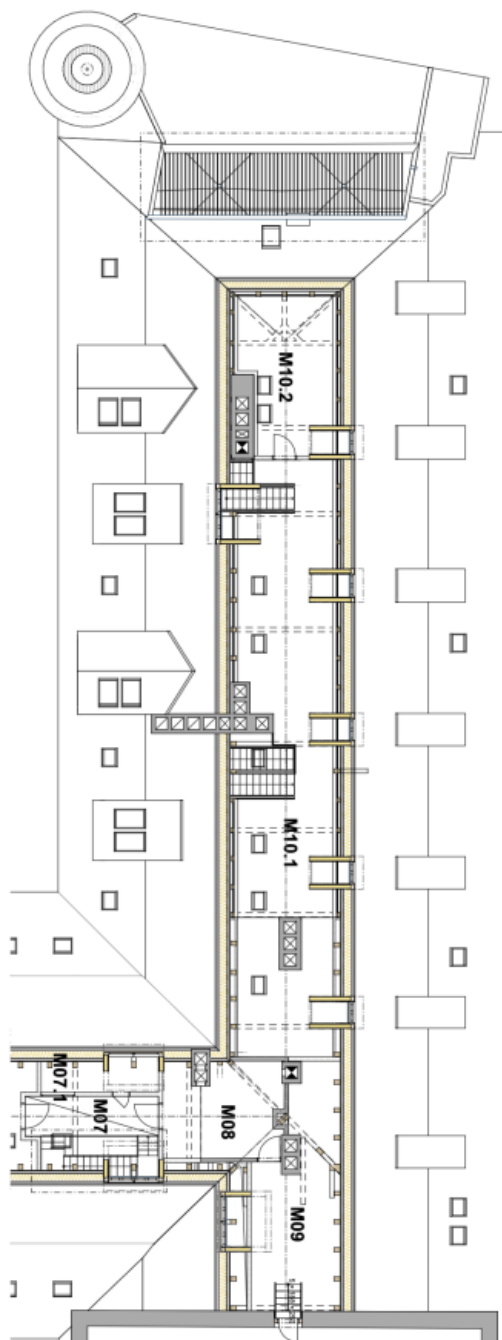
Rents and charges are listed without VAT. Lessee pays no commission.





PŮDORYS 4.NP
M 1:150

Č.	Název místnosti	Plocha (m ²)
324	HALA	20,78
325.1	ČAJOVNÁ KUCHYNKA	14,53
325.2	OKLID	2,34
326.1	KANCELÁŘ	425,43
326.2	KANCELÁŘ	98,28
327	WC MUŽI	15,00
328	WC ŽENY	4,96
329	WC ŽENY	10,99
330	TECH. PROSTOR VĚŠÁČKA	5,86
I.	INSTALAČNÍ ŠACHTA	2,07
II.	INSTALAČNÍ PROSTOR	1,80
III.	INSTALAČNÍ PROSTOR	37,25



PŮDORYS MEZIPATRA
M 1:150

Č.	Název místnosti	Plocha (m ²)
M07	LAVKA	7,59
M07.1	TECHNICKÁ CHODBA	7,72
M08	KOTELNA	14,37
M09	TECHNICKÁ MÍSTNOST	28,08
M10.1	GALERIE	72,85
M10.2	GALERIE	19,30