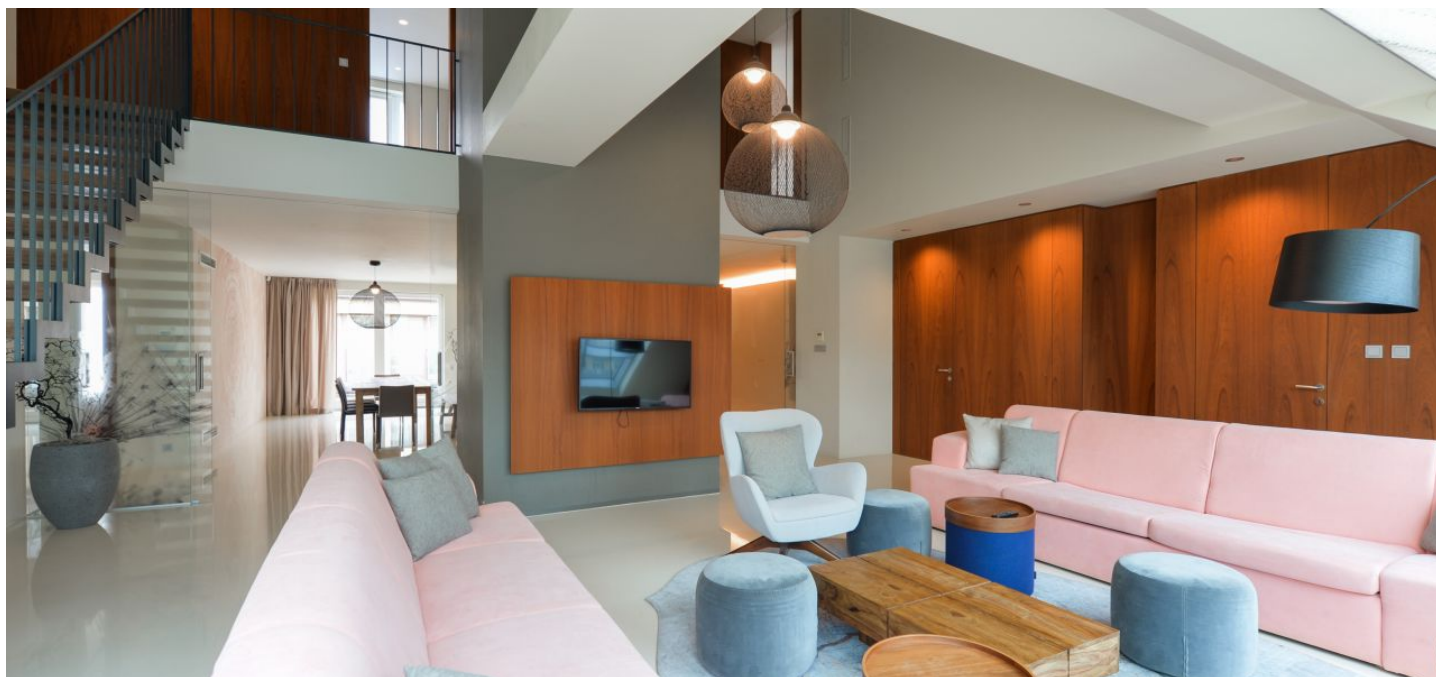




Apartment Five-bedroom (6+1)

Rented

230 m², Prague 1, Nové Město, Jindřišská





Apartment Five-bedroom (6+1)

Rented

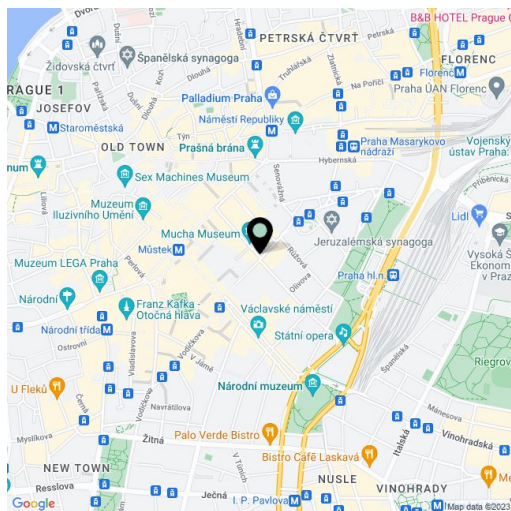
230 m², Prague 1, Nové Město, Jindřišská

Total area	261 m²
Floor area*	230 m²
Terrace	31 m²
Parking	-
Cellar	-
PENB	G
Reference number	32624
Available from	Immediately

Benefiting from a 31 sq. m. terrace, this unique, fully furnished, fully air-conditioned, 5-bedroom 3-bathroom split-level attic flat on the fourth top floor of a well maintained historic building with an elevator. Situated in the very center of Prague, just a few minutes from the Prague Main Railway Station, the Masaryk Railway Station, and Wenceslas Square with all three Prague metro lines and full amenities in the vicinity. A great location for people who enjoy city life and the convenience of being able to walk to just about anywhere. There is a tram stop just steps from the building, and within walking distance there are numerous historic sights, cultural venues, quality services, shops, cafes, restaurants, and more.

The lower level features a large, fully fitted eat-in kitchen, a living room, three bedrooms - one with a **walk-in closet**, two bathrooms (shower, toilet/bathtub, shower, toilet), a storage room and utility area, an additional toilet, and an open entrance hall with ample storage. The upper floor includes a gallery, two bedrooms with **terrace** access, a **walk-in closet**, and a bathroom (bathtub, bidet, toilet).

High standard equipment, polished screed floors, tiles, security entry door, built-in wardrobes in the bedrooms and in the hall, a master switch, blinds, a gas boiler, a washer, dryer, induction cooktop, dishwasher, microwave oven, TV, alarm, video entry phone, and garden furniture. Common building charges CZK 1000/person/month. Gas and electricity will be transferred to the tenant. Available from June 2020.



* Area of the unit according to the Civil Code. The area consists of the sum total area of the entire unit bounded by perimeter walls.



Apartment Five-bedroom (6+1)

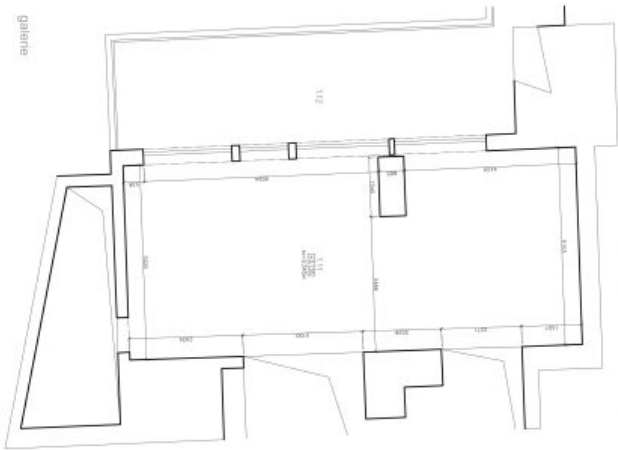
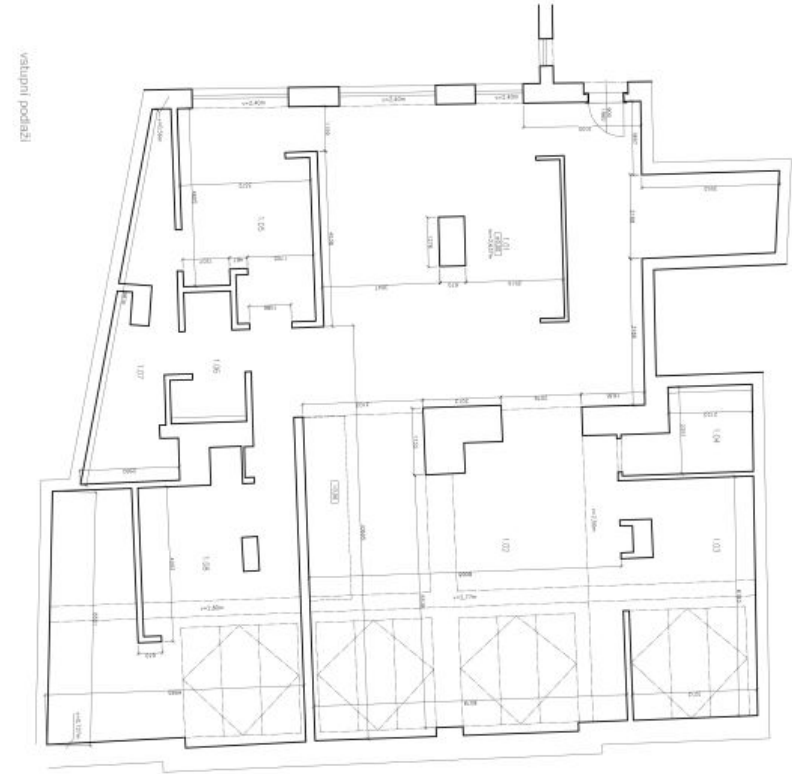
Rented

230 m², Prague 1, Nové Město, Jindřišská

Poznámka:
Vzhledem ke stavebnímu stavu bytu jsou zaměřené plochy naměřeny k provedeným rovinám stěn
a neoznačují příslušný obklad a provedení povrchu stěn.

ZAMĚŘENÍ PLOCHY BYTŮ 2011

m-arch.eu



Jindřišská 25		
kód		plocha(m²)
1.01	obýtný prostor 1	73,96
1.02	obýtný prostor 2	64,08
1.03	pokoј	20,02
1.04	koupelna	6,19
1.05	pokoј	21,3
1.06	koupelna	5,62
1.07	pokoј	13,95
1.08	pokoј	44,77
1.11	galerie	60,28
suma		310,17 m²
1.12	terasa	31,41