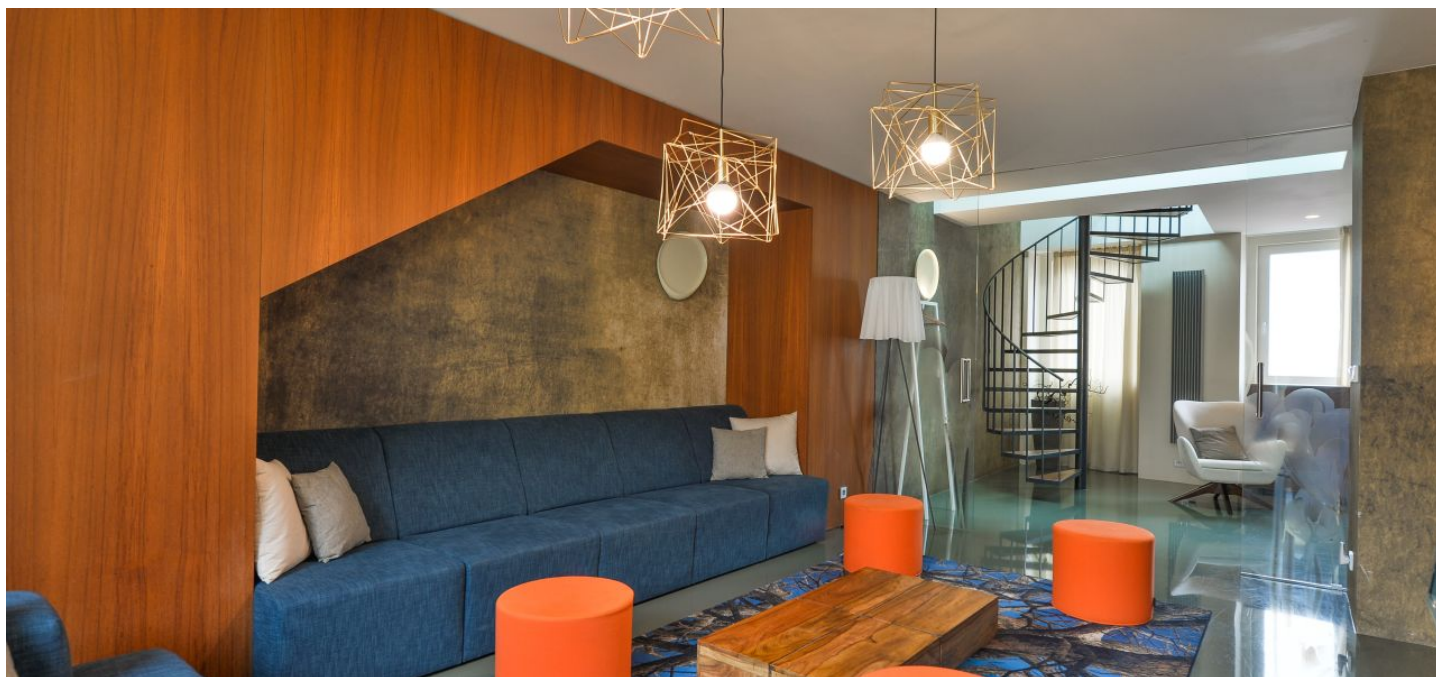




## Apartment Six-bedroom (7+1)

Rented

277 m<sup>2</sup>, Praha 1, Nové Město, Jindřišská





## Apartment Six-bedroom (7+1)

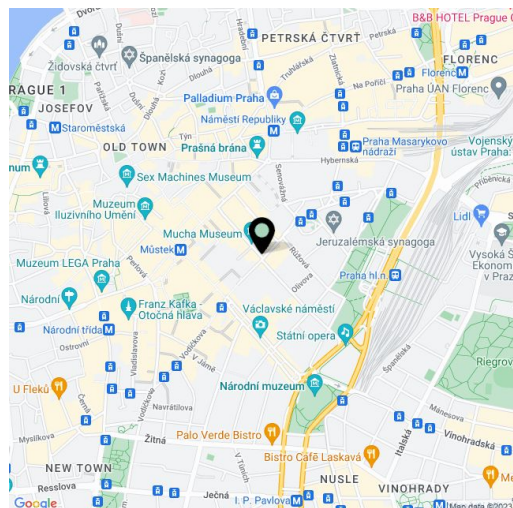
**Rented**277 m<sup>2</sup>, Praha 1, Nové Město, Jindřišská

Total area	332 m <sup>2</sup>
Floor area*	277 m <sup>2</sup>
Terrace	55 m <sup>2</sup>
Parking	-
Cellar	-
PENB	G
Reference number	32625
Available from	Immediately

Benefiting from a 55 m<sup>2</sup> terrace, this is remarkable, fully furnished, fully air-conditioned, 6-bedroom 3-bathroom split-level attic apartment is situated on the top fourth floor of a well kept historic building with an elevator. Located in the very center of Prague, just a few minutes from the Prague Main Railway Station, Masaryk Railway Station, and Wenceslas Square with all three Prague metro lines and full amenities in the vicinity. Great location for people who enjoy city life and the convenience of being able to walk to just about anywhere. There is a tram stop just steps from the building, and within walking distance there are numerous historic sights, cultural venues, quality services, shops, cafes, restaurants, and more.

The lower floor features a large, fully fitted eat-in kitchen, a living room, a separate bedroom, and a walk-through office with a circular staircase leading up to a guest bedroom. There is a bathroom (shower, bidet, toilet), and an entrance hall with storage. The upper floor includes three bedrooms with terrace access, an en-suite bathroom (walk-in shower, toilet, bidet shower), and a family bathroom (walk-in shower, bidet, toilet).

High standard equipment, polished screed floors, tiles, security entry door, built-in wardrobes in the bedrooms and the hall, master switch, blinds, gas boiler, washer/dryer, induction cooktop, dishwasher, microwave oven, TV, alarm, video entry phone, satellite reception, garden furniture. Service charges and water bills: CZK 1,000/person/month. Gas and electricity will be transferred to the tenant. Available from July 2019.



\* Area of the unit according to the Civil Code. The area consists of the sum total area of the entire unit bounded by perimeter walls.

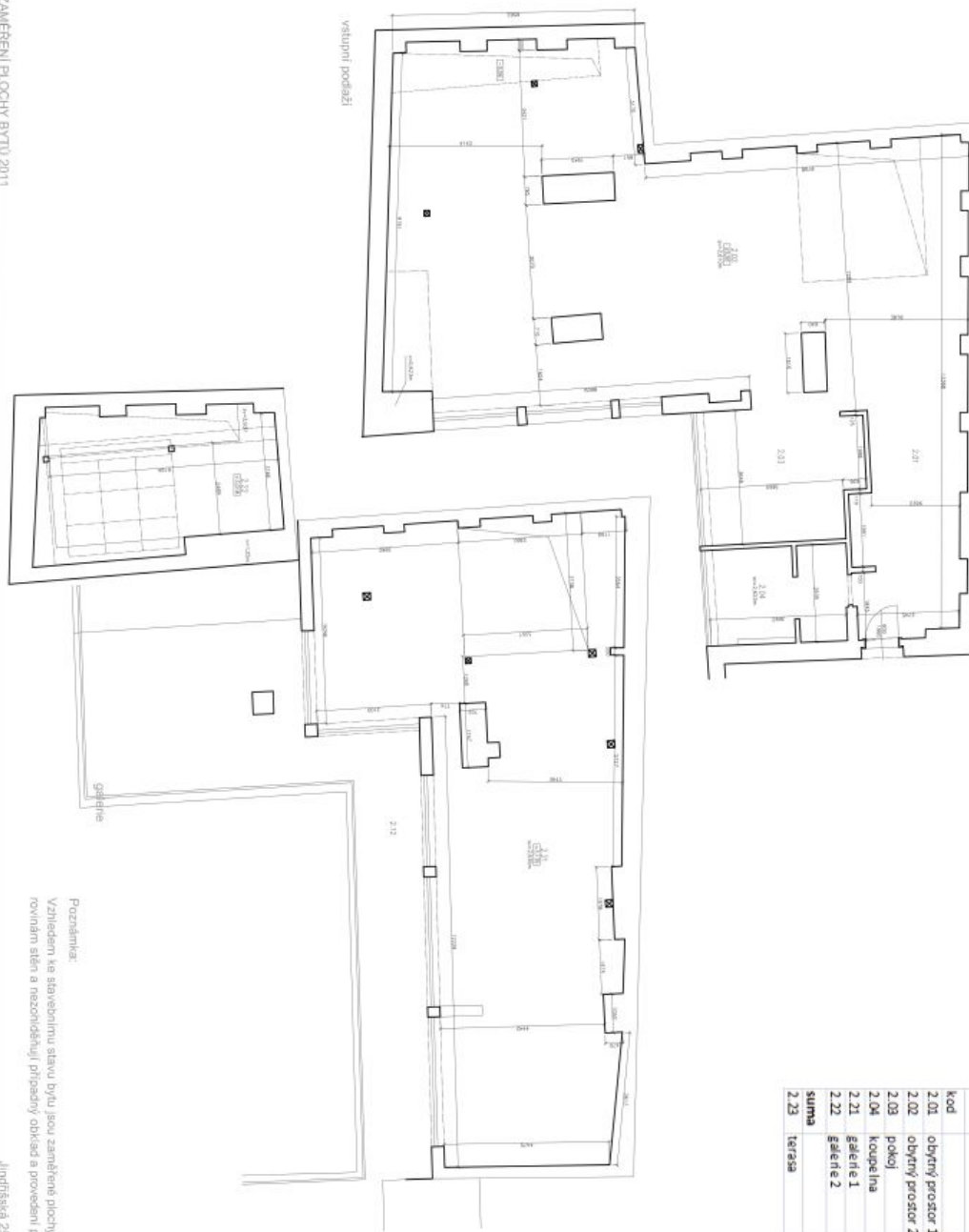


# Apartment Six-bedroom (7+1)

277 m<sup>2</sup>, Praha 1, Nové Město, Jindřišská

Rented

ZAMĚŘENÍ PLOCHY BYTŮ 2011  
m-arch.eu



Poznámka:  
Vzhledem ke stavebnímu stavu bytu jsou zaměřené plochy naměřeny k provedeným rovinám stěn a nezohledňují příslušný objem a provedení povrchu stěn.

Jindřišská 25		
Kód	plocha(m <sup>2</sup> )	
2.01	obytňový prostor 1	45,7
2.02	obytňový prostor 2	96,17
2.03	polkoj	16,11
2.04	koupelna	9,72
2.21	galerie 1	92,71
2.22	galerie 2	16,22
<b>suma</b>	<b>276,63 m<sup>2</sup></b>	
2.23	terasa	55,22

Jindřišská 25  
zaráženi  
02