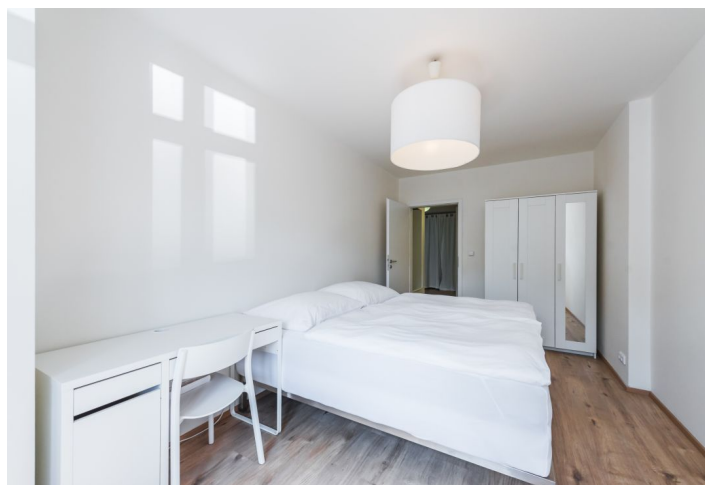
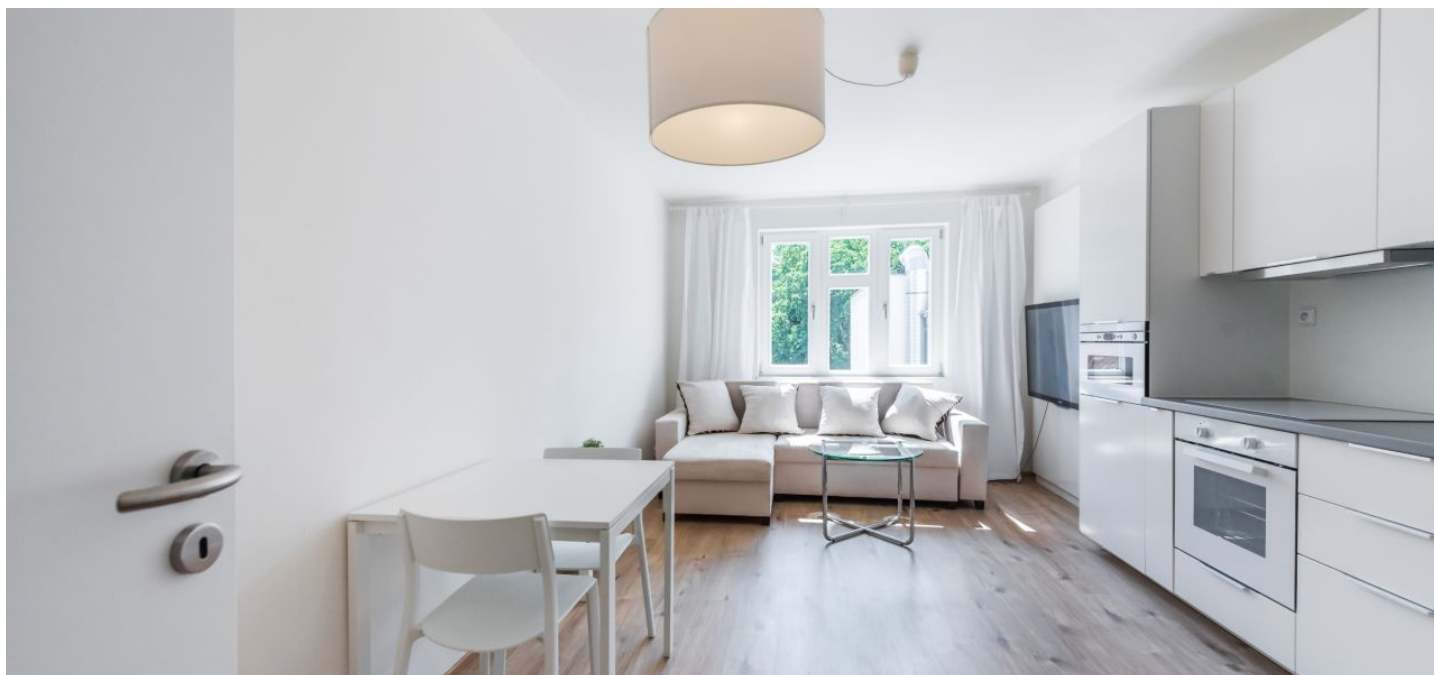




Apartment One-bedroom (2+kk)

Rented

55 m², Prague 5, Smíchov, Radlická





Apartment One-bedroom (2+kk)

Rented

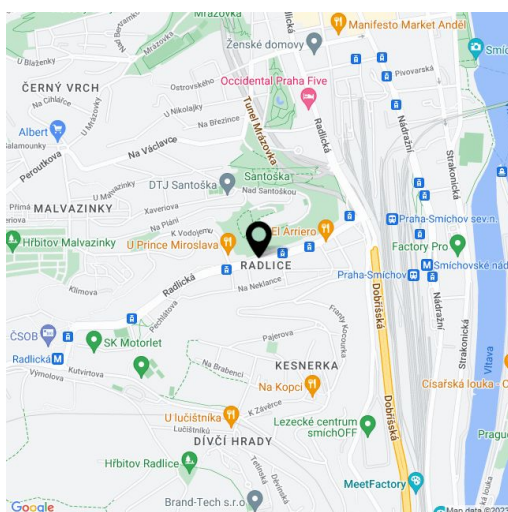
55 m², Prague 5, Smíchov, Radlická

Total area	55 m ²
Parking	-
Cellar	-
PENB	G
Reference number	32741
Available from	Immediately

Bright, fully furnished 1-bedroom apartment with views of a quiet courtyard on the 6th floor of a recently renovated apartment building with an elevator. Located just a short walk from the busy Anděl neighborhood, within walking distance of a metro station, tram stops, and the center of Smíchov. Full amenities incl. a winter stadium are in close proximity, plus several green spaces: the Santoška Garden under the wooded Paví vrch area, the landscaped orchards on Skalka, and Mrázovka Park.

The interior features a living room with a dining area and a fully fitted open plan kitchen, a bedroom, a bathroom with a bathtub, a separate toilet, storage space, and an entrance hall.

Laminated floors, tiles, a washer, a dishwasher, a microwave, hot water kettle, dishes, bed linen. Common building charges CZK 1,600 monthly. Electricity is billed separately. Available from April 2020.



* Area of the unit according to the Civil Code. The area consists of the sum total area of the entire unit bounded by perimeter walls.