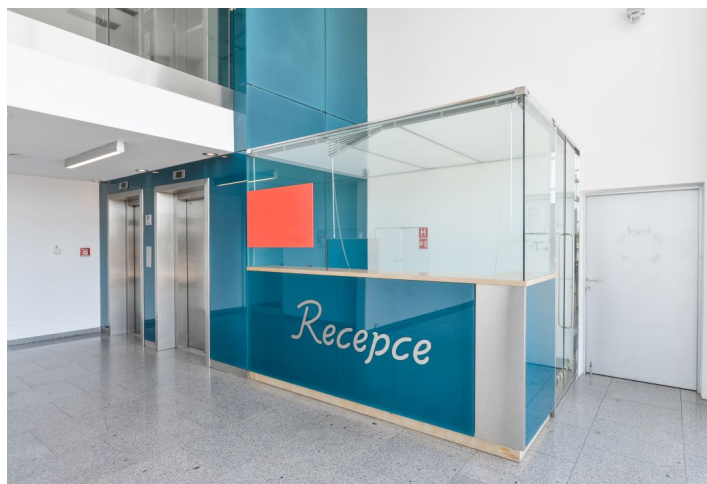




Office building

Praha 10, Hostivař, Nákupní

Rented



**Office building**

Praha 10, Hostivař, Nákupní

Rented

Service price	3 EUR monthly per m ²
Tenant consumption	—
Parking	90 EUR
Parking service charges	—
Parking ratio	—
Certification	—
PENB	G
Reference number	32870

Office space for lease in an administrative building with three floors located in the eastern part of Prague next to a shopping center with the possibility of using a large public parking lot.

On the ground floor, there is a spacious reception with facilities. Temperatures in all of the offices and office space can be regulated individually. This floor is also wheelchair accessible.

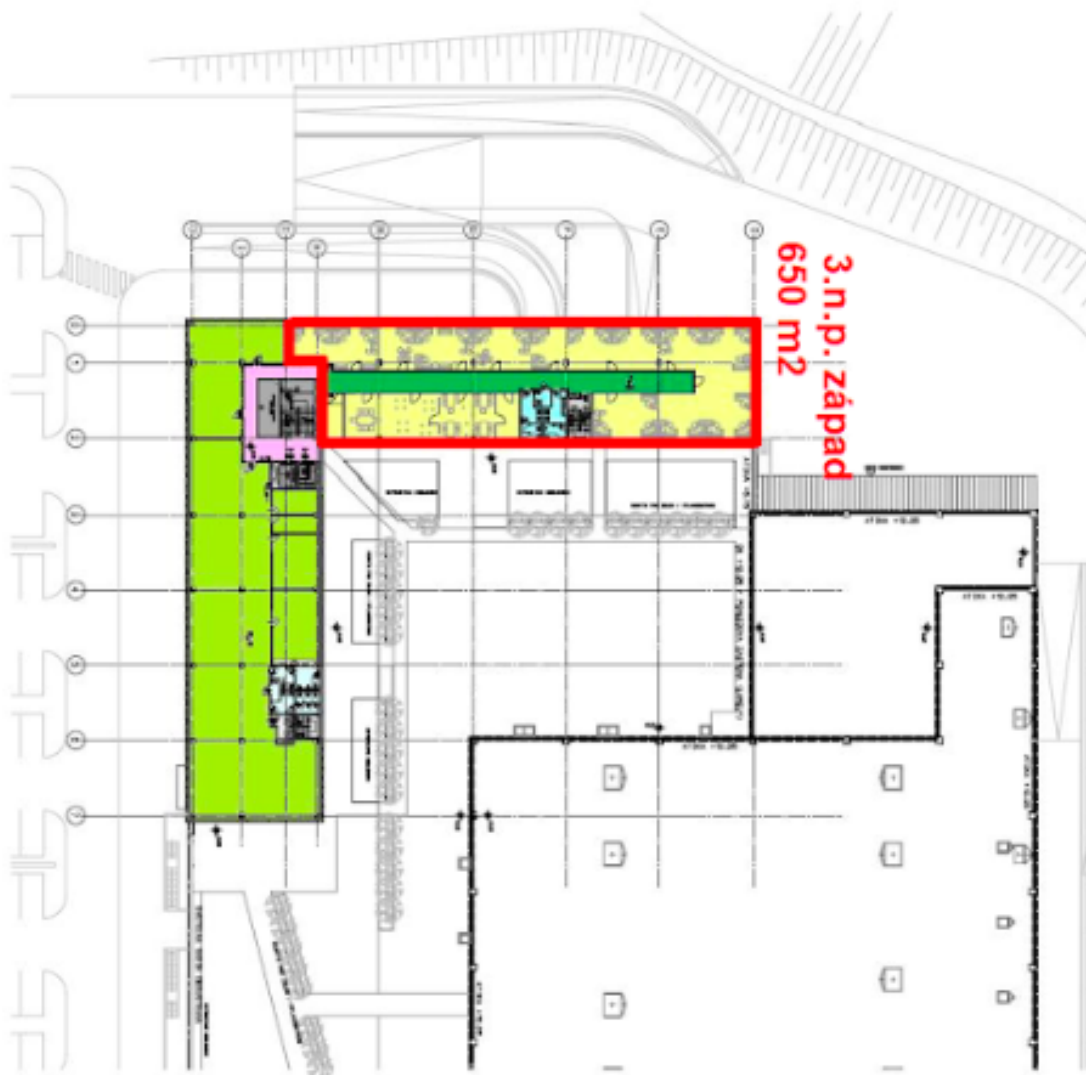
Location:

Easy access by car and public transport – bus stops with connections to the Skalka metro station (line A) are nearby. It is also easy to get to the Prague Ring Road since it's near the Štěřboholská highway access road and the Průmyslová Street intersection in the Prague district of Štěřboholý. The Hostivař forest park and a nature park are close-by.

Facilities and services:

- 24/7 reception
- nonstop security
- each floor has a flexible layout
- openable windows
- air conditioning
- garage and outdoor parking spaces
- kitchenettes
- server room with its own air-conditioning system
- remote controlled interior blinds over windows facing the sunny side
- building access cards
- camera system
- fire protection system
- double floors
- mineral fiber suspended ceiling tiles
- EPS fire safety system and EZS electronic safety system
- cooling: VZT with its own energy source and fan coils on the walls
- individual temperature control in the offices
- elevators
- smoke detectors
- magnetic card access
- possibility to install LAN and IT cables
- parking space locks

Rental and service charges are listed without VAT. Lessee pays no commission.



LEGENDA

1 504,10 celková plocha patra
1 446,05 užitná plocha patra

46,10 recepcce
55,90 schodiště centrální, výťahy

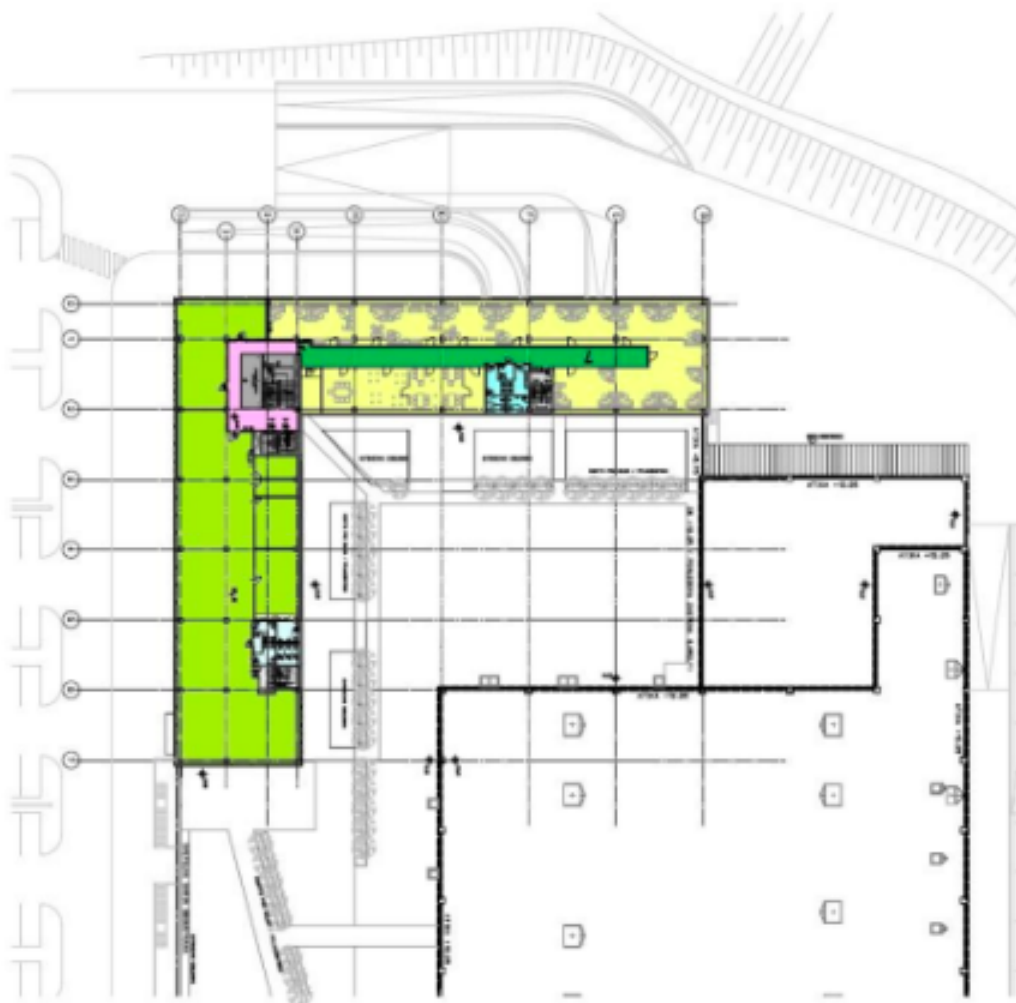
519,0 kanceláře - západ
28,60 wc - západ
101,95 chodba - západ
13,25 schodiště - západ

644,0 kanceláře - jih
29,70 wc - jih
107,70 chodba - jih
13,60 schodiště - jih

3. NADZEMNÍ PODLAŽÍ

ADMINISTRATIVNÍ BUDOVA
EUROPARK SHOPPING CENTER

04/2018



3. NADZEMNÍ PODLAŽÍ
ADMINISTRATIVNÍ BUDOVA
EUROPARK SHOPPING CENTER

04/2018

LEGENDA

1 504,10	celková plocha patra
1 446,05	užitná plocha patra
46,10	recepce
55,90	schodiště centrální, výtahy
519,0	kanceláře - západ
28,60	wc - západ
101,95	chodba - západ
13,25	schodiště - západ
644,0	kanceláře - jih
29,70	wc - jih
107,70	chodba - jih
13,60	schodiště - jih