



Apartment One-bedroom (2+kk)

Ask for price

59 m², Prague 1, Staré Město, Liliova

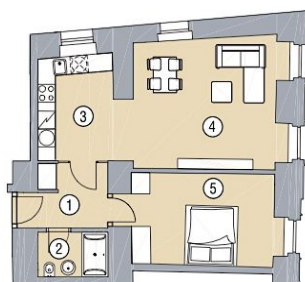


Apartment 11

No.	room	m ²
1.	Entrance hall	6,50
2.	Bathroom with toilet	3,70
3.	Kitchen	9,70
4.	Living and dining room	23,80
5.	Bedroom	16,00
Total m ²		59,50

Byt č. 11

č.	místnost	m ²
1.	Vstupní hala	6,50
2.	Koupelna + WC	3,70
3.	Kuchyň	9,70
4.	Obývací pokoj + jídelna	23,80
5.	Ložnice	16,00
Celkem m ²		59,50





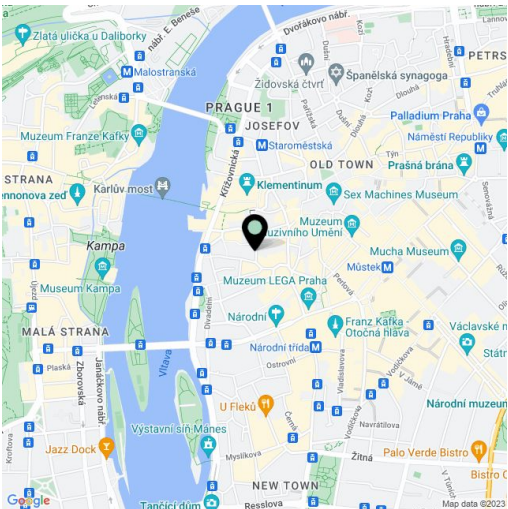
Apartment One-bedroom (2+kk)

Ask for price

59 m², Prague 1, Staré Město, Liliova

Total area	59 m²
Parking	Arranged.
Cellar	-
Service price	82 CZK monthly per m²
PENB	G
Reference number	3290

This apartment on the 1st floor has a living room with corner kitchen, bedroom, bathroom and entry hall. The living room faces peaceful mature courtyard garden that belongs to the adjacent building, bedroom is situated to the cute Zlata (Golden) street that is locked over the night time. Liliova 8 is one of the finest residential projects currently on the market. Located in the historic center of Prague, steps from Old Town Square and Charles Bridge, with leading restaurants, cafes, luxury boutiques and Prague's famous sights nearby. The residence is created for those who desire the character and distinction of an historic building in the center, but demand the standards and comforts of stylish living with all facilities and services included. The interior equipment comprises replicas of original doors with decorative fittings, ADSL Internet, air-conditioning, underfloor heating, surround sound system, and solid wood floors throughout. The residence has special amenities such as concierge, lobby, surveillance camera system and security personnel, winter garden, and a courtyard garden. Rare opportunity to buy an apartment in a first-rate residence with five star services in Prague 1. The purchase price includes kitchen.Price upon



* Area of the unit according to the Civil Code. The area consists of the sum total area of the entire unit bounded by perimeter walls.