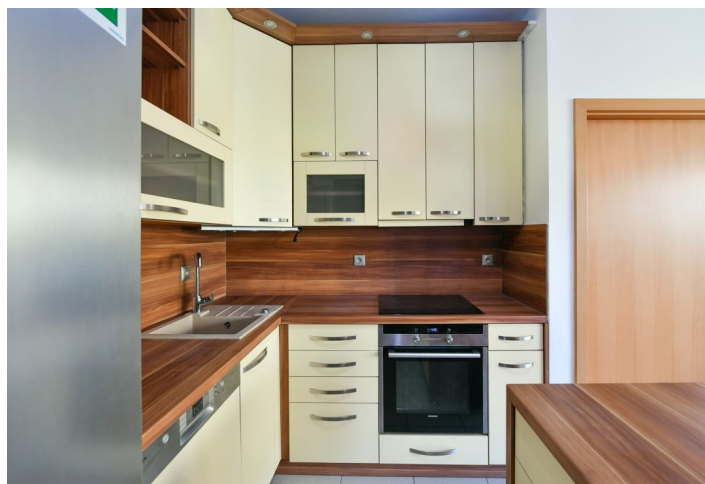




## Apartment Two-bedroom (3+kk)

Rented

60 m<sup>2</sup>, Prague 6, Řepy, Čistovická





## Apartment Two-bedroom (3+kk)

Rented

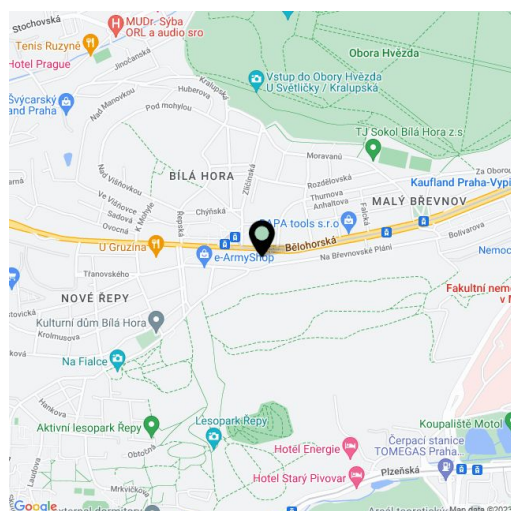
60 m<sup>2</sup>, Prague 6, Řepy, Čistovická

Total area	67 m <sup>2</sup>
Floor area*	60 m <sup>2</sup>
Loggia	7 m <sup>2</sup>
Parking	Garage parking.
Garage	Yes
Cellar	Yes
PENB	C
Reference number	32967
Available from	Immediately

This is a partially furnished 2-bedroom apartment with an enclosed balcony and green views, on the first floor with lift in a gated residential project with a 24/7 reception and security, a children's playground and underground parking. Located in a quiet Prague 6 neighborhood near the Japanese School, about 15 min. by car from the city center, within quick reach of full amenities. Conveniently located for the airport and Prague 6 international schools, within easy reach of Divoká Šárka natural preserve and Hvězda and Ladronka Parks.

The interior includes a living room with a fully fitted open plan kitchen and balcony access, two separate bedrooms with built-in wardrobes and storage, a bathroom with a bathtub and a toilet, an additional separate toilet, and an entrance hall with built-in wardrobes and storage.

**Wooden floating floors**, carpets, tiles, security entry door, blinds, independent gas heating, washer, dishwasher, induction cooktop, microwave oven, TV, alarm, cellar. One **garage parking** space is included. Deposit for service charges and water: approx. CZK 2250 per month for one person. Gas and electricity are billed separately. Available from November 2020.



\* Area of the unit according to the Civil Code. The area consists of the sum total area of the entire unit bounded by perimeter walls.