



## Apartment Three-bedroom (4+kk)

Sold

119 m<sup>2</sup>, Prague 6, Liboc, Libocká





## Apartment Three-bedroom (4+kk)

**Sold**119 m<sup>2</sup>, Prague 6, Liboc, Libocká

Total area	124 m <sup>2</sup>
Floor area*	119 m <sup>2</sup>
Terrace	5 m <sup>2</sup>
Parking	garage parking space CZK 600.000 incl.VAT
Garage	Yes
Cellar	Yes
PENB	B
Reference number	33017

This apartment with an east-facing terrace is situated on the 2nd floor of U Hvězdy Residence. Residents can enjoy a private garden adjacent to the Hvězda River and pleasant living thanks to modern technologies and high-quality materials. A location with plenty of greenery, a rich selection of services, and quick connections to the city center and the airport.

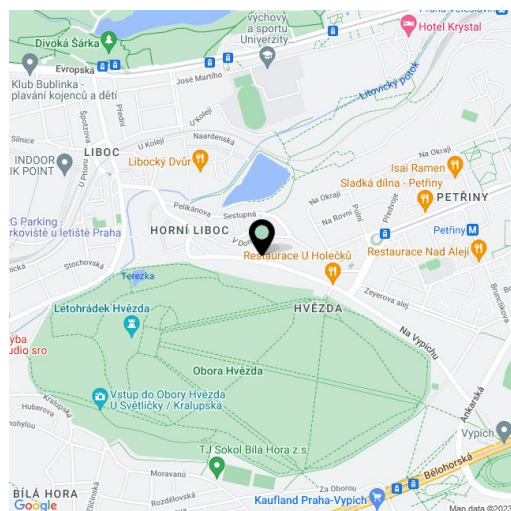
The interior is designed as a 3-bedroom apartment with an almost **50-meter living room with a kitchen and dining area**, an adjacent terrace, 3 bedrooms, 2 bathrooms, a guest toilet, a large entry hall, a storeroom, and a walk-in closet.

The **energy-efficient building** ensures minimal energy costs and everyday thermal comfort regardless of the outdoor temperature. The high standard facilities include, among other things, a **heat recovery unit**, brushed oak veneer floors, large-format tiles (60x60 and 60x30 cm), heat and acoustically insulated maintenance-free **aluminum windows with exterior blinds**, or Villeroy & Boch, Hansgrohe, Grohe, and Hüppe sanitary ware. Central heating from the central boiler room (with gas condensing boilers). Security is ensured by a camera and electronic security system, contactless key entry to the building, a NEXT security entrance door to the apartment (class 3), or a videophone with a color screen in the building. The unit comes with a **cellar**. It is possible to purchase a garage parking space. The garage is equipped with a charging station for electric cars.

Within walking distance, there are kindergartens and elementary schools, a high school, and shopping opportunities from small bakeries and farm shops to supermarkets. The residential area has an abundance of green spaces—gardens, landscaped lawns, mature trees, and playgrounds. Within easy reach are several large parks that are ideal for sports activities and relaxation: Hvězda Park, **Ladronka Park**, and the **Divoká Šárka Nature Reserve**. Another advantage is the Petřiny metro station, thanks to which **you will get to the city center within 10 minutes**. Equally fast is the drive to the airport. There are also several tram and bus stops nearby.

Floor area 119 m<sup>2</sup>, terrace 5.5 m<sup>2</sup>, cellar 2.7 m<sup>2</sup>.

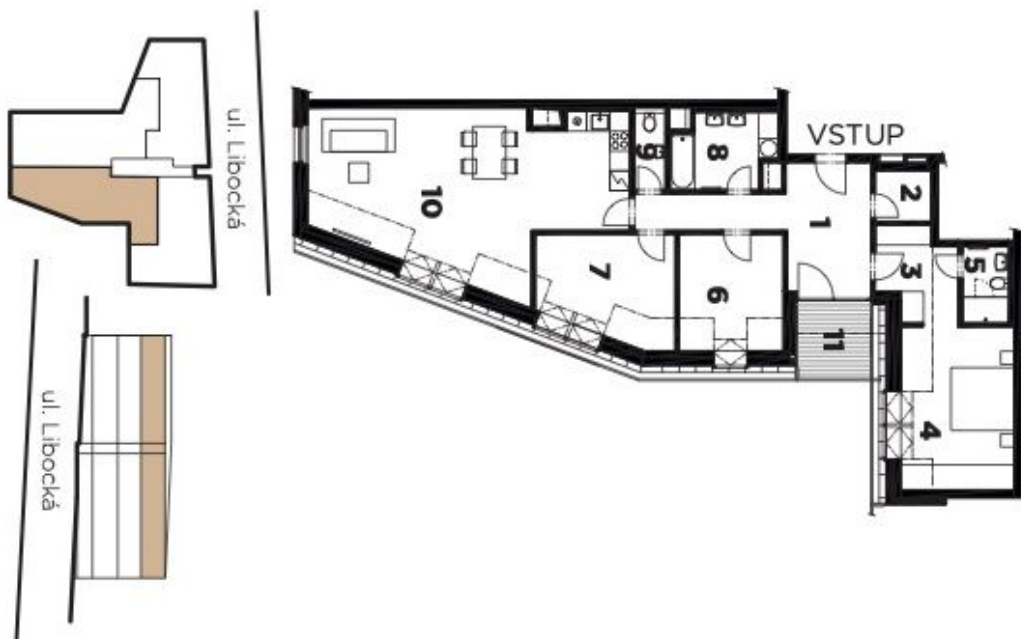
In addition to regular property viewings, we also offer **real-time video viewings** via WhatsApp, FaceTime, Messenger, Skype, and other apps.



\* Area of the unit according to the Civil Code. The area consists of the sum total area of the entire unit bounded by perimeter walls.



# Apartment Three-bedroom (4+kk)

119 m<sup>2</sup>, Prague 6, Liboc, Libocká**Sold****Byt č. 3.4 / 3. NP orientace: JV****4+kk | 124,5 m<sup>2</sup>**

1	Hala	16,0 m <sup>2</sup>
2	Komora	2,3 m <sup>2</sup>
3	Šatna	6,1 m <sup>2</sup>
4	Pokoj	17,1 m <sup>2</sup>
5	Koupelna	2,9 m <sup>2</sup>
6	Pokoj	11,0 m <sup>2</sup>
7	Pokoj	12,9 m <sup>2</sup>
8	Koupelna	5,2 m <sup>2</sup>
9	WC	1,9 m <sup>2</sup>
10	Obytný prostor	43,6 m <sup>2</sup>
<b>Celková podlahová plocha bytu*</b>		<b>119,0 m<sup>2</sup></b>
11	Terasa	5,5 m <sup>2</sup>
<b>Celková plocha</b>		<b>124,5 m<sup>2</sup></b>

\* podlahová plocha znamená vnitřní podlahovou plochu všech místností domu, včetně podlahové plochy všech svíselých nosných i nenosných konstrukcí uvnitř domu, která je stínována v souladu s definicí uvedenou v § 3 nařízení vlády č. 366/2013 Sb., ze dne 30. října 2013, o úpravě některých záležitostí souvisejících s bytovým spolumístováním.

\*\* cena garážového stání je 570 000,- Kč vč. DPH. Cena bytu je včetně skřipu.

+420 257 328 281 | [info@rezidenceuhvezdy.cz](mailto:info@rezidenceuhvezdy.cz) | [www.rezidenceuhvezdy.cz](http://www.rezidenceuhvezdy.cz)



RESIDENCE  
U HVEZDY