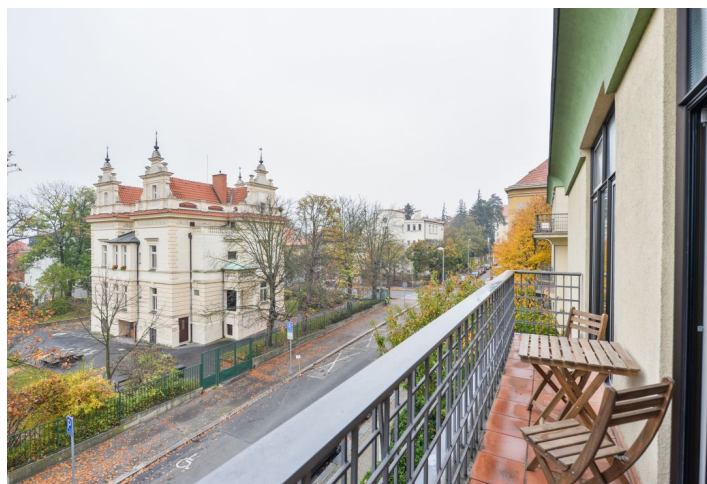
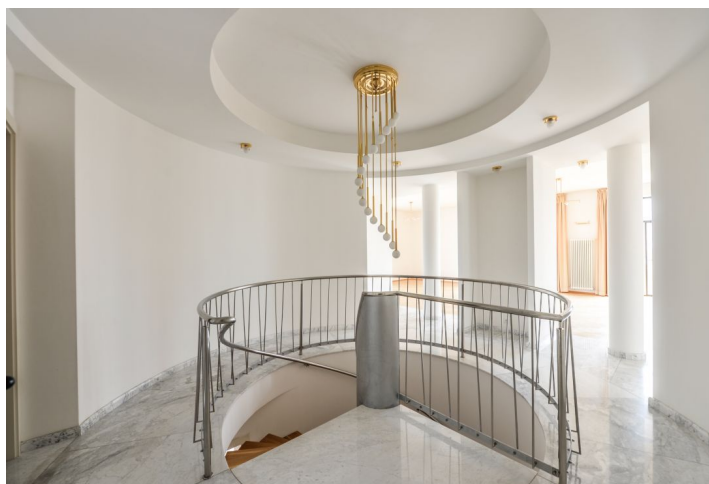




Apartment Five-bedroom (6+1)

€ 4 385 | CZK 110 000

371 m², Prague 6, Bubeneč, Rooseveltova





Apartment Five-bedroom (6+1)

€ 4 385 | CZK 110 000

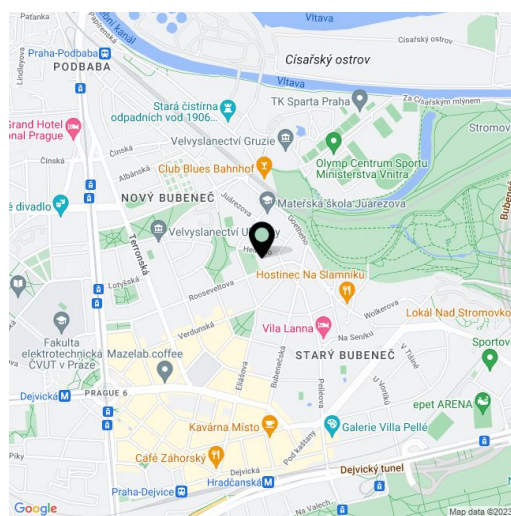
371 m², Prague 6, Bubeneč, Rooseveltova

Total area	386 m ²
Floor area*	371 m ²
Balcony	9 m ²
Terrace	6 m ²
Parking	Two on-site garage parking spaces.
Garage	Yes
Cellar	Yes
Service price	Services including water, reception, pool, sauna, and fitness CZK 28,000/month. Electricity - transferred to the tenant.
PENB	G
Reference number	33028
Available from	Immediately

This spacious, high-standard split-level apartment with 3 balconies offering green views, on the 3rd floor of a modern residence designed by the renown architect Bořek Šípek, with superior services, and underground parking is situated in a quiet green residential area of Bubeneč with many embassies, on the edge of Willy Brandt Park, a few minutes' walk to Stromovka Park. The Dejvice metro station is a short walk away; the ride to the city center takes only eight minutes; and the airport is 15 minutes by car. Building amenities include a large swimming pool, a gym, a sauna, a reception, concierge service, and a private garden.

The upper, entrance level includes a spacious living room with a dining area and balcony, a fully fitted kitchen with a pantry, a cooling room, and a serving window, a guest bedroom (or an office), a storage room, a walk-in closet, a toilet, and an entrance hall. The lower level features four bedrooms, three bathrooms, three walk-in closets, a study, two balconies, a toilet, and a utility room.

Air-conditioning, private interior elevator, hardwood parquet and marble floors and bathroom tiles, security entry door, built-in wardrobes, central heating, dishwasher, alarm, cellar. The residence has a central trash chute and structured cabling. Two garage parking spaces are included.



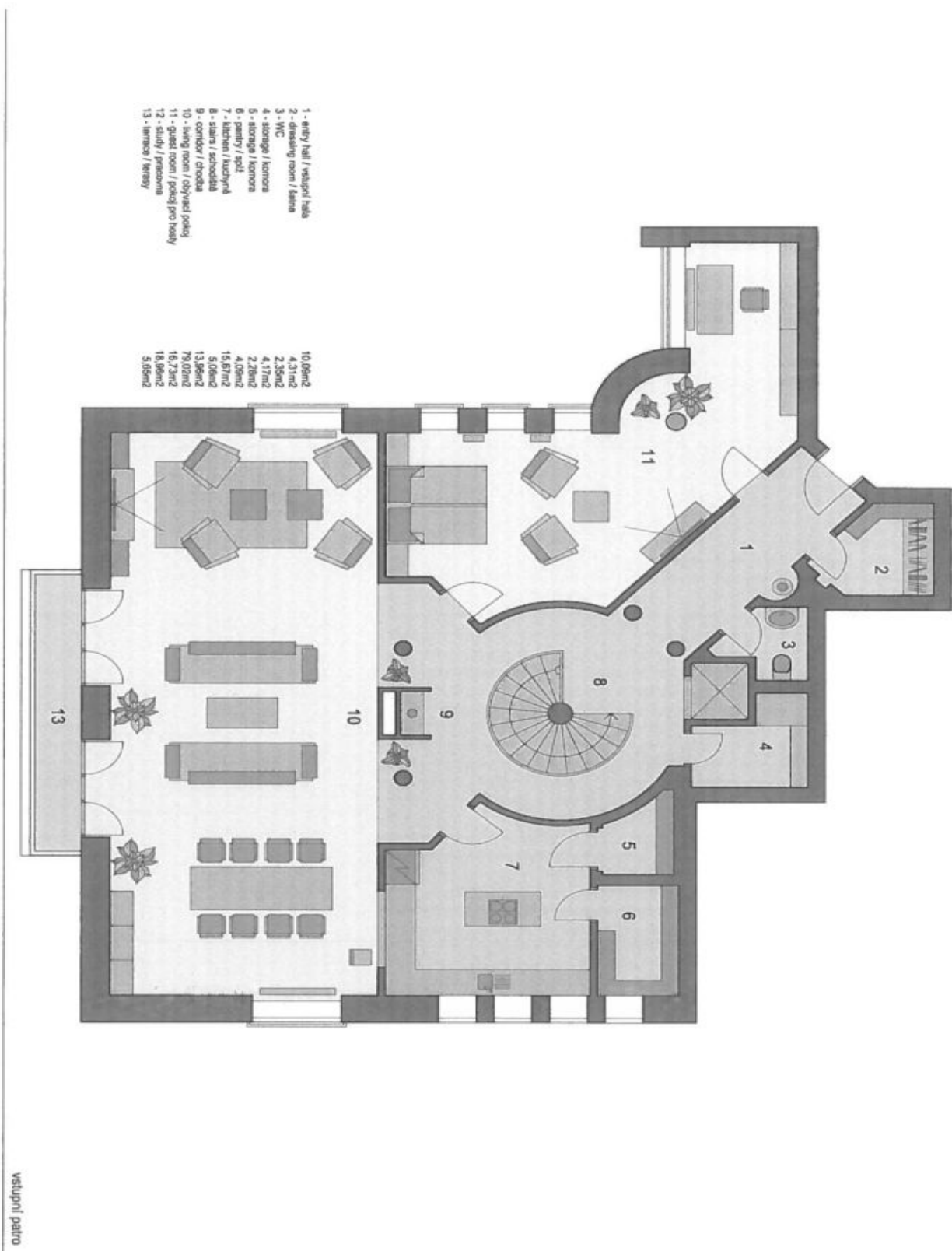
* Area of the unit according to the Civil Code. The area consists of the sum total area of the entire unit bounded by perimeter walls.



Apartment Five-bedroom (6+1)

€ 4 385 | CZK 110 000

371 m², Prague 6, Bubeneč, Rooseveltova





Apartment Five-bedroom (6+1)

€ 4 385 | CZK 110 000

371 m², Prague 6, Bubeneč, Rooseveltova

