



Apartment Two-bedroom (3+1)

Sold

125 m², Praha 6, Dejvice, Eliášova





Apartment Two-bedroom (3+1)

Sold125 m², Praha 6, Dejvice, Eliášova

Total area	125 m ²
Parking	-
Cellar	Yes
Service price	3 500 CZK monthly
PENB	G
Reference number	33068

This renovated apartment with high ceilings and large rooms is situated on the 3rd floor of a brick corner building with an elevator. The house is located on the border of the sought-after neighborhoods of Dejvice and Bubeneč, close to a metro station and tram stops.

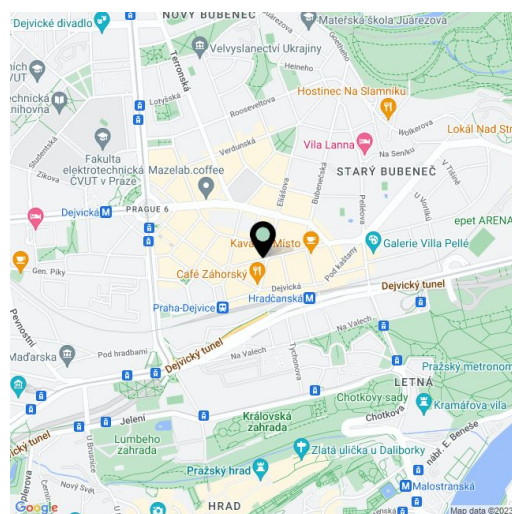
The apartment has a **large corner living room**, 3 more rooms, a generously sized entrance hall, a bathroom (with a toilet), a separate toilet, a closet, and a utility room. In 2 rooms there is a preparation for a kitchen, so the location of the kitchen can be chosen according to buyer's wishes.

Features include brand **new oak parquet floors**, large-format tiles, **wooden casement windows**, and a Junkers gas boiler (with state-of-the-art control via iOS or Android). The apartment has a **spacious cellar** with a vaulted brick ceiling and penetration treatment against moisture. All networks (electricity, gas, water, waste) are completely new.

The building stands on the corner of two **one-way streets lined with trees**. There are a large number of renowned restaurants and cafes, shops, and all other amenities in the immediate vicinity. The Hradčanská metro station and tram stop is a two-minute walk away, and the area has quick access to the city center and the airport. You can walk to the Prague Castle or to Stromovka Park.

Interior 124.9 m², cellar 11.9 m².

In addition to regular property viewings, we also offer **real time video viewings** via WhatsApp, FaceTime, Messenger, Skype, and other apps.



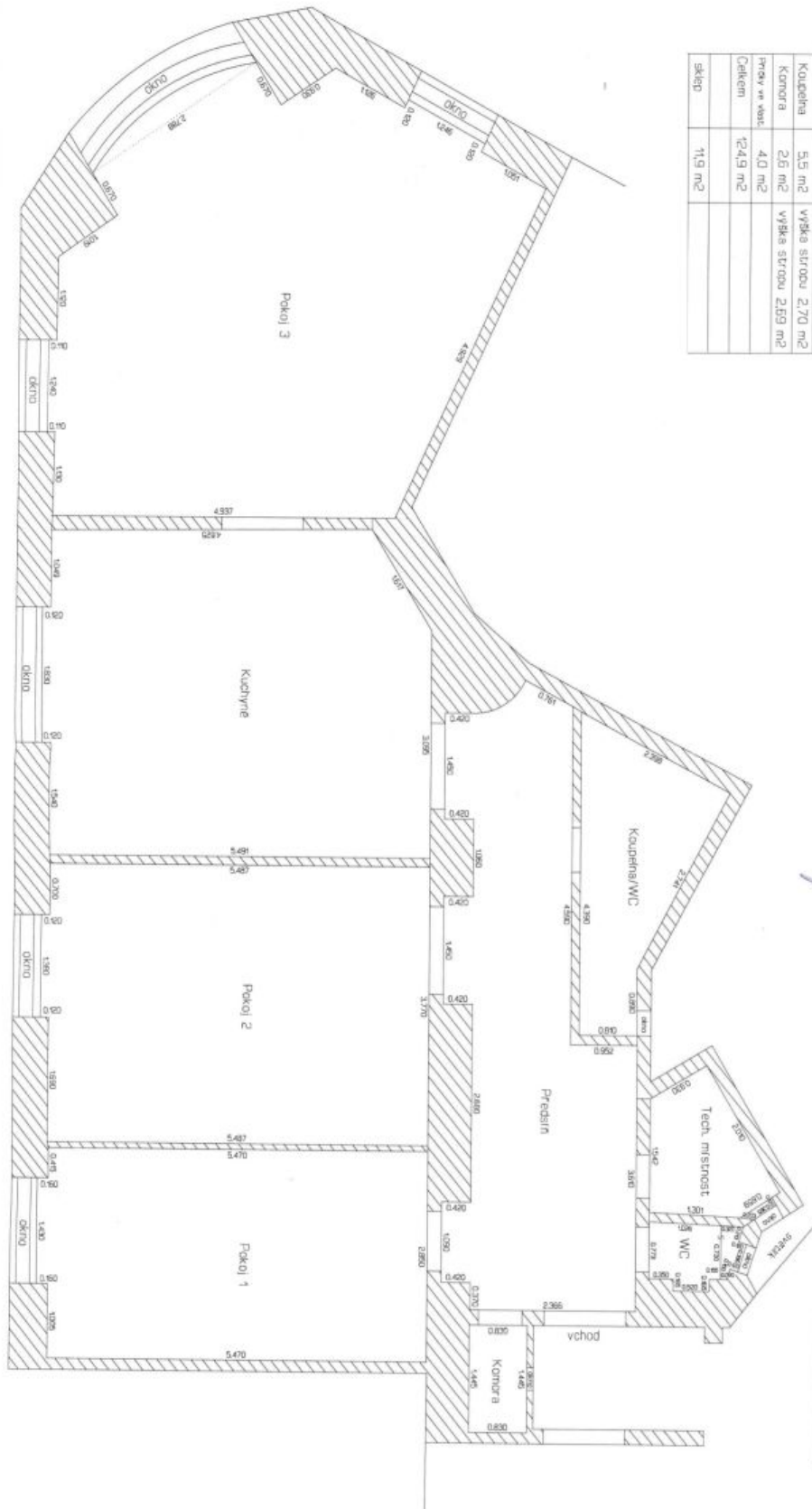
* Area of the unit according to the Civil Code. The area consists of the sum total area of the entire unit bounded by perimeter walls.



Apartment Two-bedroom (3+1)

125 m², Praha 6, Dejvice, Eliášova

Sold



Pokoj 1	15,8 m ²	výška stropu 3,12 m ²
Pokoj 2	20,9 m ²	výška stropu 3,12 m ²
Pokoj 3	33,0 m ²	výška stropu 3,12 m ²
Kuchyně	24,0 m ²	výška stropu 3,12 m ²
Předstín	6,8 m ²	výška stropu 3,14 m ²
WC	1,2 m ²	výška stropu 2,69 m ²
Koupelna	1,1 m ²	výška stropu 3,08 m ²
Komora	5,5 m ²	výška stropu 2,70 m ²
Komora	2,6 m ²	výška stropu 2,69 m ²
Průhy ve vst. celkem	4,0 m ²	
Celkem	124,9 m ²	
sklepek	11,9 m ²	



Byt č.12 Eliášova 33/7 Praha 6