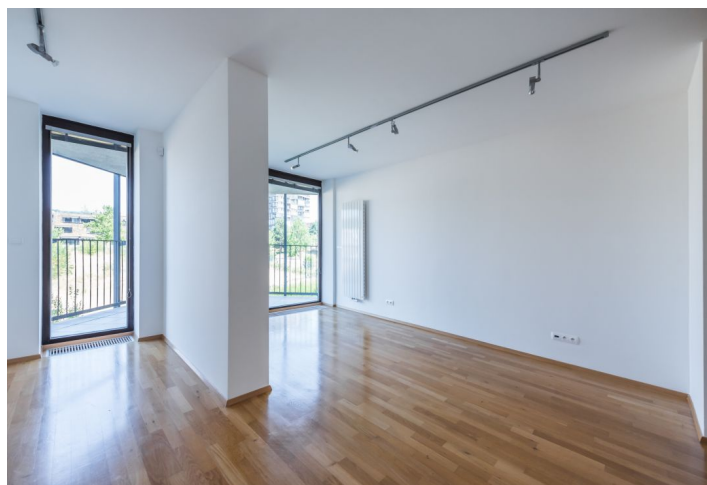
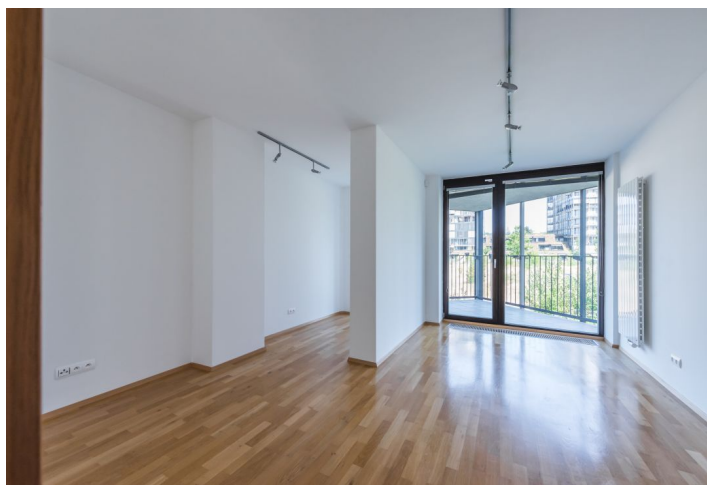
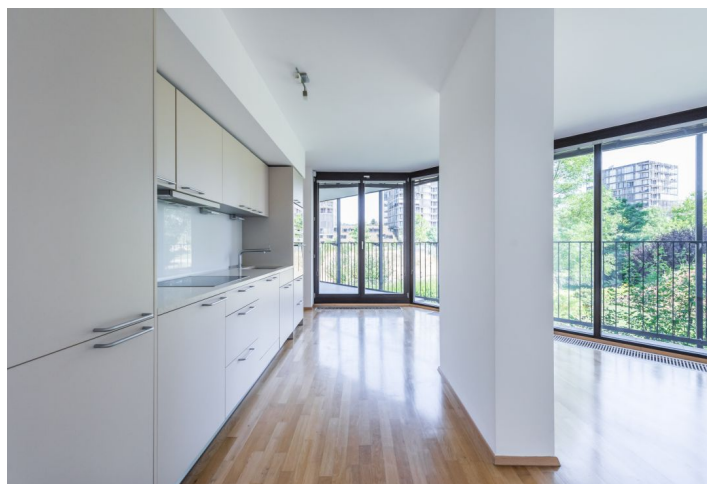




Apartment Two-bedroom (3+kk)

Sold

108 m², Prague 3, Žižkov, Pitterova





Apartment Two-bedroom (3+kk)

Sold108 m², Prague 3, Žižkov, Pitterova

Total area	140 m ²
Floor area*	108 m ²
Loggia	32 m ²
Parking	Garage parking space
Garage	Yes
Cellar	Yes
Service price	8 500 CZK monthly
PENB	C
Reference number	33131

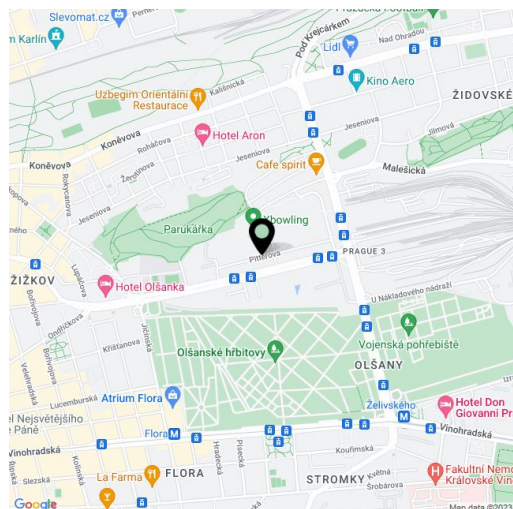
This modern apartment with a terrace overlooking the greenery is located on the 2nd floor of the Central Park residential complex with a 24-hour reception, underground parking, an elevator, a security guard, and a café in a location with full amenities and fast access to the city center. The project is situated in close proximity to Parukářka Park.

The apartment is divided into a living room with a kitchen, a master bedroom with an en-suite bathroom, a second bedroom, a bathroom, an entrance hall, and a closet with a connection for a washing machine. **All rooms have access to a covered terrace.**

Facilities include **large-format floor-to-ceiling aluminum windows** with interior blinds, **wooden floors**, a security entry door, a video entry phone, and a kitchen unit with built-in appliances. Heating is provided from the central boiler room. The purchase price includes a **garage parking place** and a **cellar**. The residential complex has a reception, a security guard, a camera system, and an electronic entrance to the building.

The Central Park Residence by the **A69 architectural studio** has been awarded the Grand Prix of Architects 2010 - **National Award for Architecture**. Nearby, there are cafes, groceries, playgrounds, a health center, or a sports center with tennis courts, a fitness area, and a sauna. Tram stops with many links, including night ones, are just a few steps from the building. The Želivského metro station (line A) is within 4 minutes by tram. The complex includes a **private landscaped park**, and another large green area on **Parukářka Hill** is within a short walk from the building.

Interior 107.83 m², terrace 31.73 m², cellar 7,4 m²



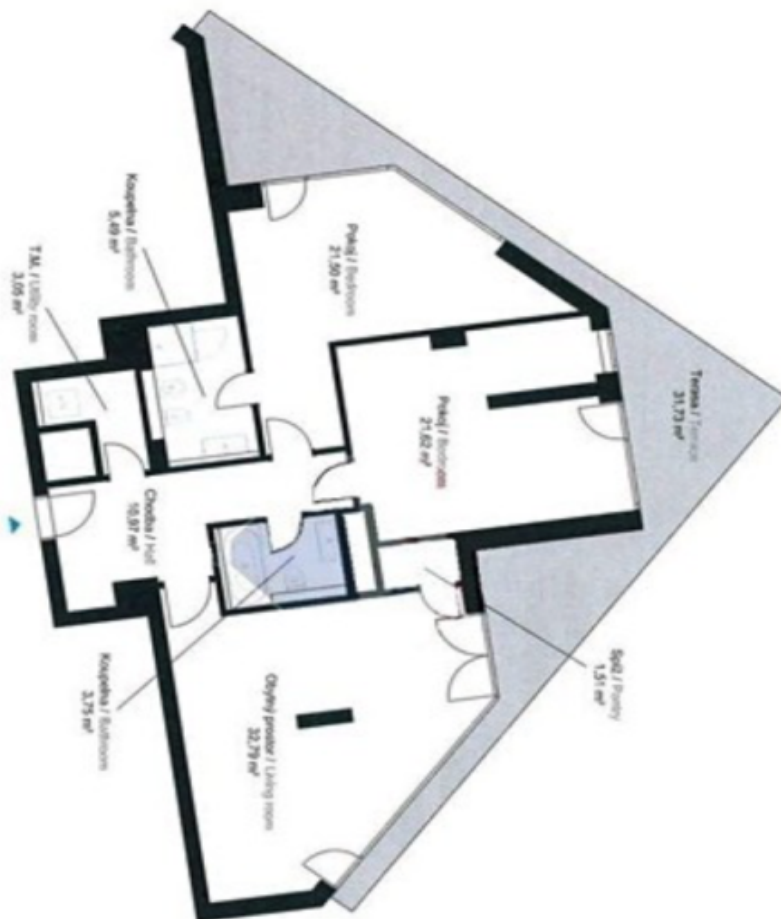
* Area of the unit according to the Civil Code. The area consists of the sum total area of the entire unit bounded by perimeter walls.



Apartment Two-bedroom (3+kk)

Sold

108 m², Prague 3, Žižkov, Pitterova



3+kk 2-bedr
3. podlaží 3rd Fl
Sřmruží Summr
Podlaží floor
Opatřeno Equipped
Podlažní plocha Living floor area 108.4
Výhled view Terrace view
Výhled zaskvěry Sunlit view 31.1
Výhled sálkyu Outer view 7.1