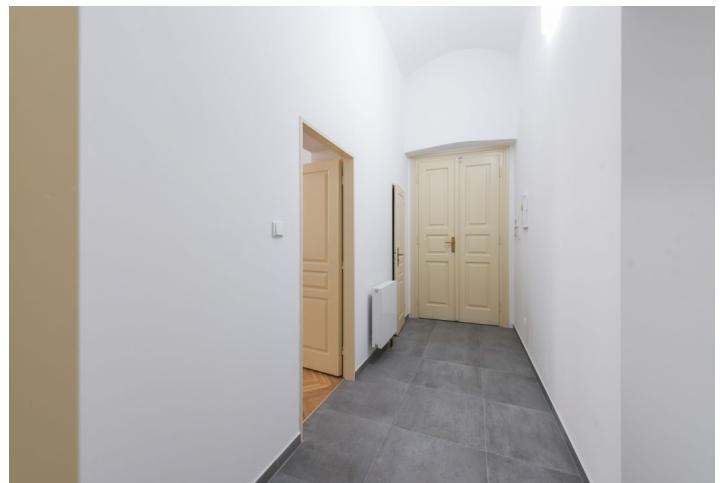
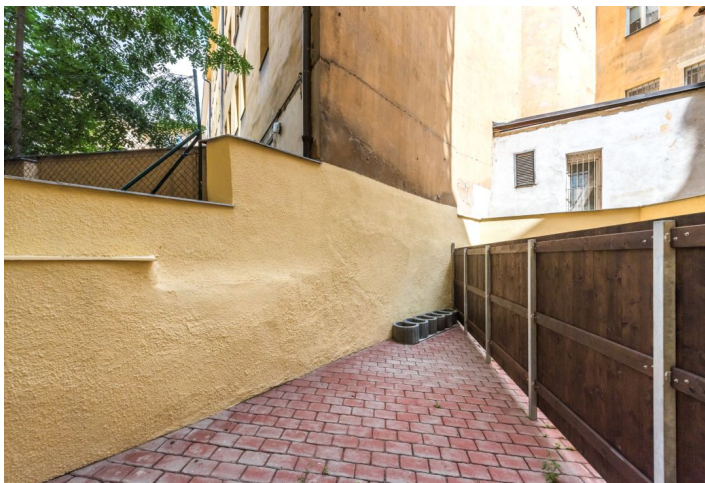




## Apartment Studio (1+kk)

47 m<sup>2</sup>, Prague 1, Nové Město, Na Struze

Rented





## Apartment Studio (1+kk)

47 m<sup>2</sup>, Prague 1, Nové Město, Na Struze

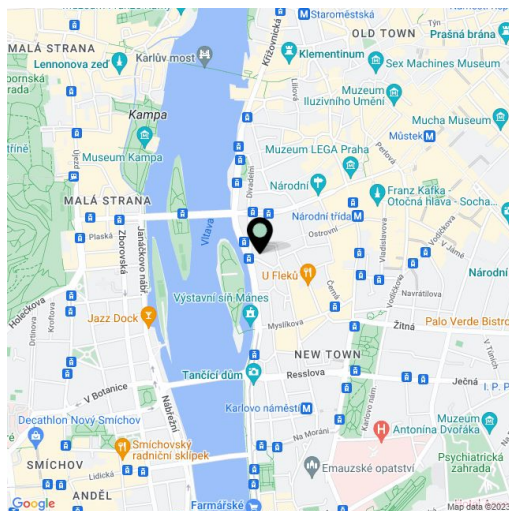
Rented

Total area	62 m <sup>2</sup>
Floor area*	47 m <sup>2</sup>
Terrace	15 m <sup>2</sup>
Parking	-
Cellar	-
PENB	G
Reference number	33239
Available from	Immediately

Rental apartment just steps from the Vltava riverbank, the Žofín Palace and the National Theatre. This is a fully newly renovated studio apartment with a terrace on the ground floor of a completely newly refurbished traditional residential building with preserved original details and a new lift. Well located in a quiet street in the historic center of Prague, just a minute walk from trams, a few min. from Karlovo náměstí metro station, with full amenities in the immediate neighborhood.

The airy interior features a living room / bedroom with a fitted open plan kitchen and two French windows leading to the **terrace** in the courtyard of the building. There is a bathroom including a bathtub, a separate toilet, a pantry, and an entrance hall.

**Solid wood parquet floors**, large format tiles, **high vaulted ceilings**, gas boiler, washing machine, dishwasher. The apartment can be equipped with furniture at a higher rent. Service charges and utilities are billed separately.



\* Area of the unit according to the Civil Code. The area consists of the sum total area of the entire unit bounded by perimeter walls.