



Apartment One-bedroom (2+kk)

Rented

47 m², Prague 10, Vršovice, Holandská





Apartment One-bedroom (2+kk)

Rented

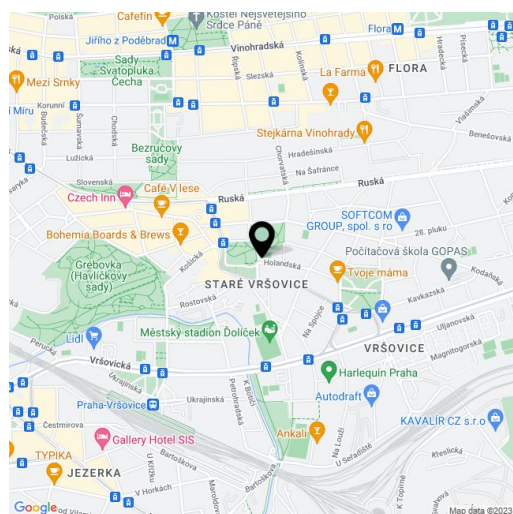
47 m², Prague 10, Vršovice, Holandská

Total area	47 m ²
Parking	-
Cellar	-
PENB	G
Reference number	33273
Available from	Immediately

This newly renovated and fully furnished 1-bedroom designer apartment is on the third floor of a completely newly refurbished residential building with no elevator on the border of Vinohrady and Vršovice. Located on a quiet street moments from the Vršovický zámek (Vršovice Castle), and in close vicinity of Havlíčkovy Sady Park. Full amenities are available within immediate reach, and the location offers quick access to the city center (a few short tram stops to the Náměstí Míru metro station, line A).

The interior features a living room with a fully fitted open plan kitchen and a dining area, a bedroom facing the quiet courtyard, a shower room, a separate toilet, a utility room, and an entrance hall.

Designer furnishings, high ceilings (**vaulted ceiling** in the hall), large windows, hardwood floors, large-format tiles, security entry door, built-in wardrobes in the bedroom, electric boiler, washer/dryer, dishwasher, microwave oven, kitchenware, 2 TV sets, UPC cable connection. Service charges and utilities: approx. CZK 2,500/month.



* Area of the unit according to the Civil Code. The area consists of the sum total area of the entire unit bounded by perimeter walls.

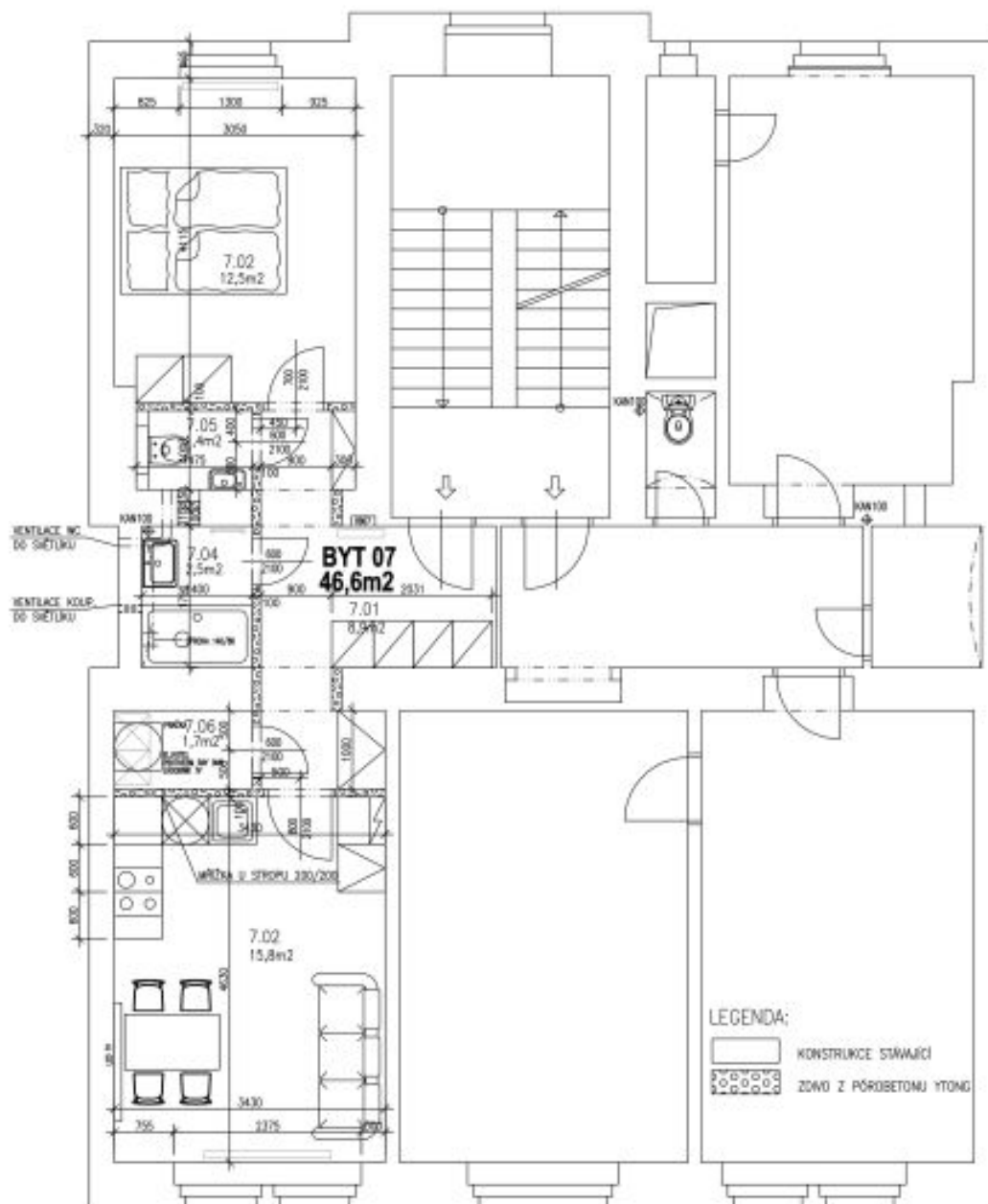


Apartment One-bedroom (2+kk)

Rented

47 m², Prague 10, Vršovice, Holandská

NOVÝ STAV - PŮDORYS 4.NP



STAVEBNÍ - NOVÝ STAV