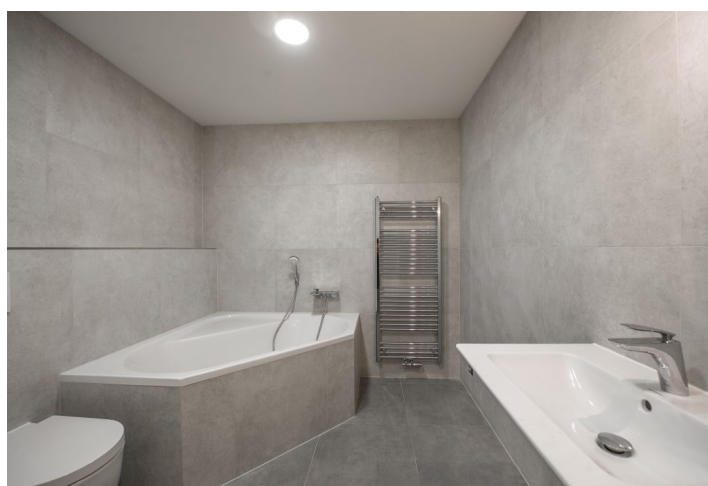




Apartment Three-bedroom (4+kk)

Rented

155 m², Prague 5, Smíchov, Na Šumavě





Apartment Three-bedroom (4+kk)

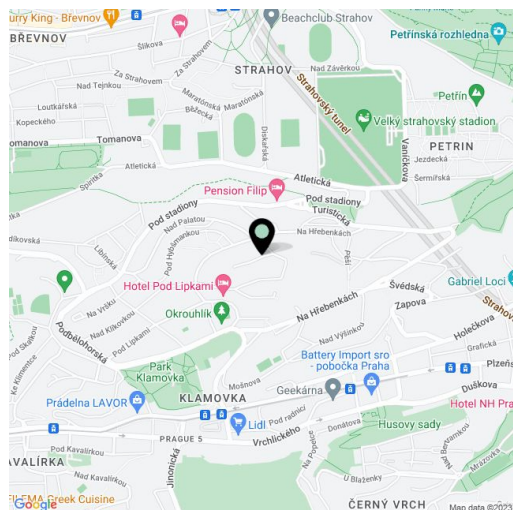
Rented155 m², Prague 5, Smíchov, Na Šumavě

Total area	210 m ²
Floor area*	155 m ²
Terrace	55 m ²
Garden	60 m ²
Parking	Two garage parking spaces.
Garage	Yes
Cellar	Yes
PENB	C
Reference number	33299
Available from	Immediately

Boasting a private 60 m² garden and a large terrace offering views of the surrounding greenery, this is a brand new 3-bedroom 2-bathroom apartment. Set on the first floor of a contemporary residential project comprised of 5 high quality apartments, in the prestigious residential area of Hřebenka, Prague 5. Blending seamlessly with the surrounding residential area, the project with attractive common areas and a marble staircase and tiling offers peaceful family living close to nature. Conveniently located for the downtown Prague including the business and entertainment zone of Anděl / Nový Smíchov. The nearest bus stop is located just a few min. walk from the building.

The interior features a spacious living room with a fully fitted open plan kitchen and a dining area, a master bedroom with an en-suite bathroom (walk-in shower, toilet) and a **walk-in closet**, two further bedrooms with a shared **walk-in closet**, a family bathroom (bathtub, bidet, toilet), a utility / storage room, and a large entrance hall. The **terrace** is accessible from all main rooms, and the **garden** is accessed from the terrace.

Air-conditioning, **oak floors**, large format tiles, French windows, gas boiler with remote control via Apple phones, underfloor heating (exl. the bedroom), Villeroy & Boch and Duravit bathroom fittings, outdoor blinds, video entry phone, alarm, **cellar**, electronic locks in the building, lift. **Two garage parking spaces** are included. Service charges approx. CZK 4000 monthly. Utilities are billed extra. Available from November 1, 2019.



* Area of the unit according to the Civil Code. The area consists of the sum total area of the entire unit bounded by perimeter walls.



Apartment Three-bedroom (4+kk)

Rented

155 m², Prague 5, Smíchov, Na Šumavě

