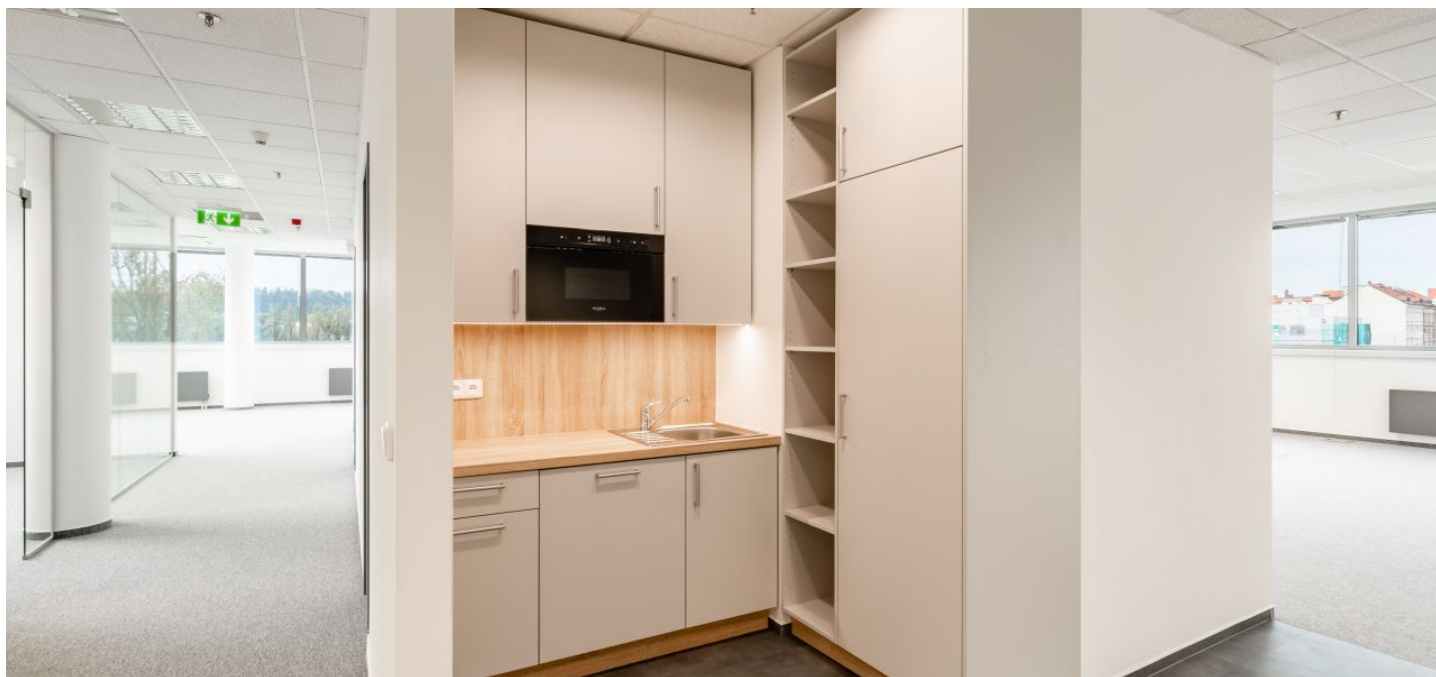




## Office space

€ 15.50 / m<sup>2</sup> | CZK 390 / m<sup>2</sup>

Prague 7, Holešovice, Jankovcova





## Office space

Prague 7, Holešovice, Jankovcova

€ 15.50 / m<sup>2</sup> | CZK 390 / m<sup>2</sup>

Service price	135 CZK monthly per m <sup>2</sup>
Available area	702 m <sup>2</sup>
Cellar	-
Parking	EUR 140 / pp / month
PENB	B
Reference number	33318

Office complex in Prague 7 offers office space for lease on the 2nd floor. The building, which has received international BREEAM certification at the Very Good level, consists of two towers - building A with 19 floors and the lower building B with 4 floors. The complex has a central reception, 24-hour security, underground parking and modern lifts. The complex also includes a restaurant and a café.

### Location:

Great accessibility by public transport and by car - close to metro stations Vltavská (line C) and Palmovka (line B), and just a few minutes walk to tram stops Dělnická and Maniny.

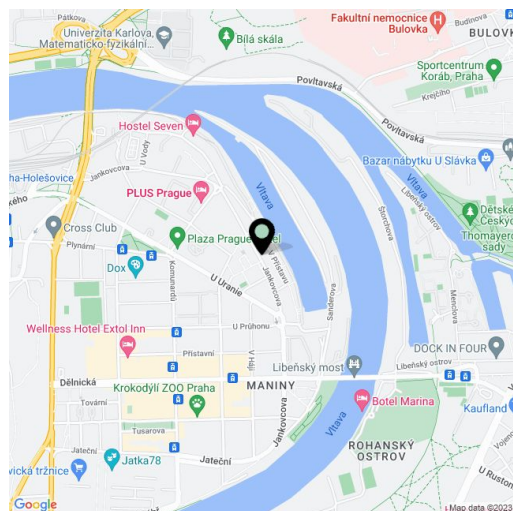
### Features and Services:

- Central reception
- 24-hour security service
- Air-conditioning
- CCTV
- Modern elevators
- Carpets and tiles on the floors
- Storage space
- Underground garage parking
- Restaurant and café

### Available from July, 2025.

Images might not accurately reflect the current state of the premises.

Rental and service charges listed without VAT. Lessee pays no commission.





# Office space

€ 15.50 / m<sup>2</sup> | CZK 390 / m<sup>2</sup>

Prague 7, Holešovice, Jankovcova

