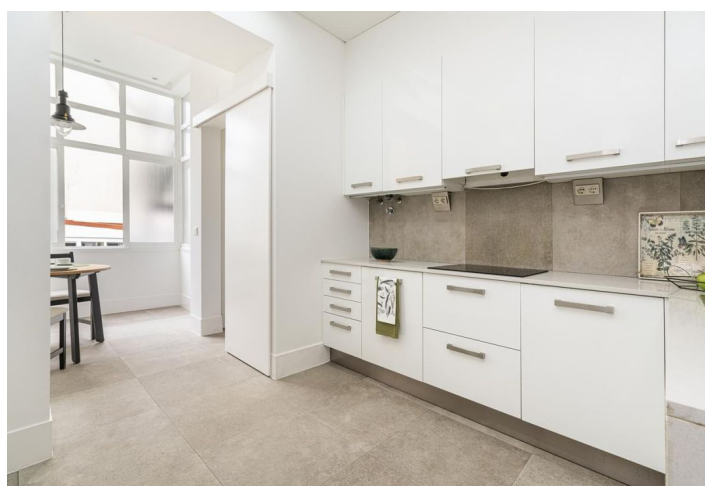
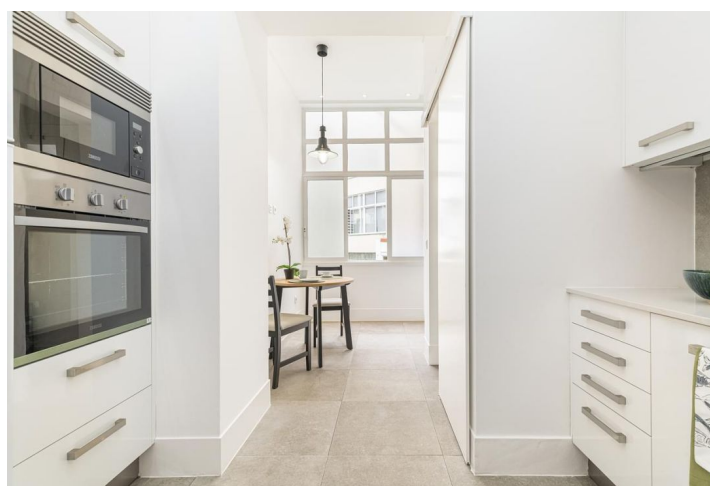




Apartment Two-bedroom (3+1)

€ 500 000 | CZK 12 632 500

122 m², Lisboa, Área Metropolitana de Lisboa





Apartment Two-bedroom (3+1)

€ 500 000 | CZK 12 632 500

122 m², Lisboa, Área Metropolitana de Lisboa

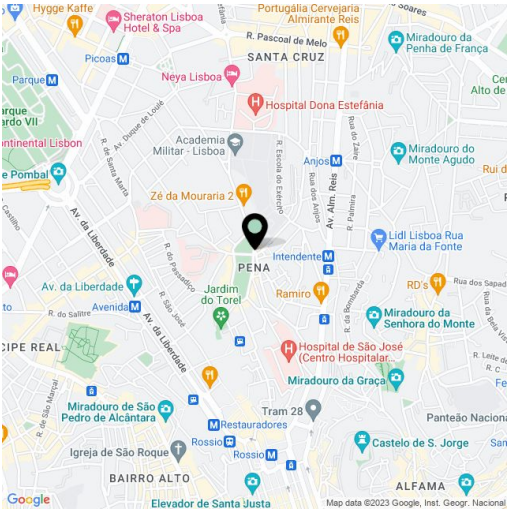
Total area	122 m²
Parking	-
Cellar	-
PENB	G
Reference number	33427

This newly renovated apartment is located practically across the street from the Four Seasons Ritz Hotel in Lisbon in a prestigious modern neighborhood close to a large shopping center, the beautifully landscaped Eduardo VII park, and the botanical garden.

Its four-rooms are currently configured as a bedroom, living room, kitchen, and pantry, but you can switch their layout and functions around according to your needs. There are also two bathrooms and a separate toilet.

The building stands close to the Marquês de Pombal roundabout at the end of the grand **Avenida da Liberdade**, a boulevard with many **high-end luxury shops**. A nearby **peaceful, romantic park** provides a welcome respite from the lively hustle and bustle of Lisbon's city streets. The neighborhood, though central, has easy access to the airport.

Interior 122.6 sq. m.



* Area of the unit according to the Civil Code. The area consists of the sum total area of the entire unit bounded by perimeter walls.