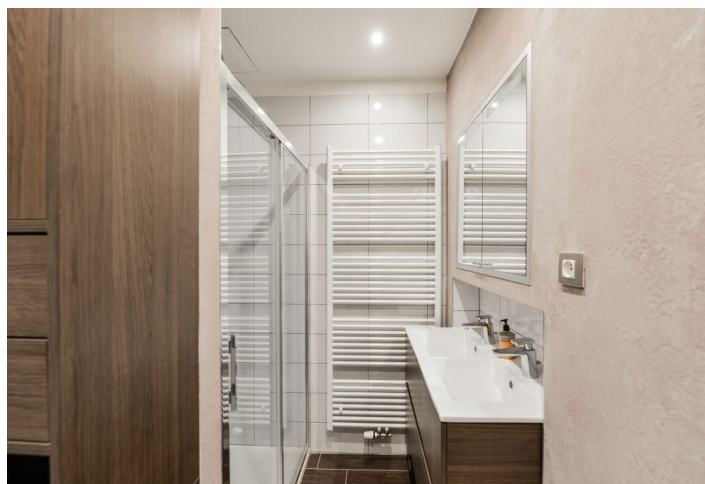




Apartment Two-bedroom (3+1)

Rented

100 m², Prague 1, Staré Město, Benediktská





Apartment Two-bedroom (3+1)

Rented

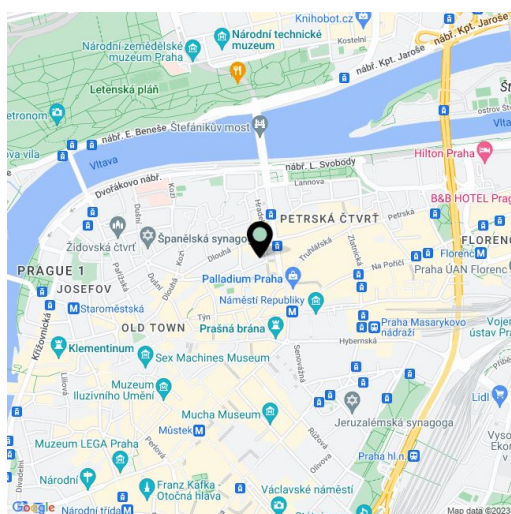
100 m², Prague 1, Staré Město, Benediktská

Total area	100 m ²
Parking	-
Cellar	-
PENB	G
Reference number	33521
Available from	Immediately

This is a fully refurbished and furnished 2-bedroom apartment on the first floor of a well kept renovated building with a lift and preserved original details. Conveniently located in the Prague city center, steps from Náměstí Republiky metro station, Palladium and Kotva shopping malls, just minutes from the Old Town Square and luxurious Pařížská Street, with excellent shopping and entertainment opportunities. Prestigious address surrounded by top selection of restaurants, cafes, delis, boutiques and other services, within walking distance of the Vltava riverbank and the popular Letná Park.

The interior features a fully fitted eat-in kitchen, a living room, 2 bedrooms, a shower room with a toilet, an additional separate toilet, and an entrance hall with built-in storage.

Solid wood parquet floors, tiles, high ceilings with **stucco** ornaments, large windows, security entry door, built-in wardrobes in one bedroom, gas boiler, washing machine, Baumatic kitchen appliances, dishwasher, induction cooktop, microwave oven, kitchenware, wine fridge, two TV sets, Astra and Hotbird satellite reception. Common building charges and water CZK 2,250/month. Electricity and gas are billed separately.



* Area of the unit according to the Civil Code. The area consists of the sum total area of the entire unit bounded by perimeter walls.



Apartment Two-bedroom (3+1)

100 m², Prague 1, Staré Město, Benediktská

Rented

