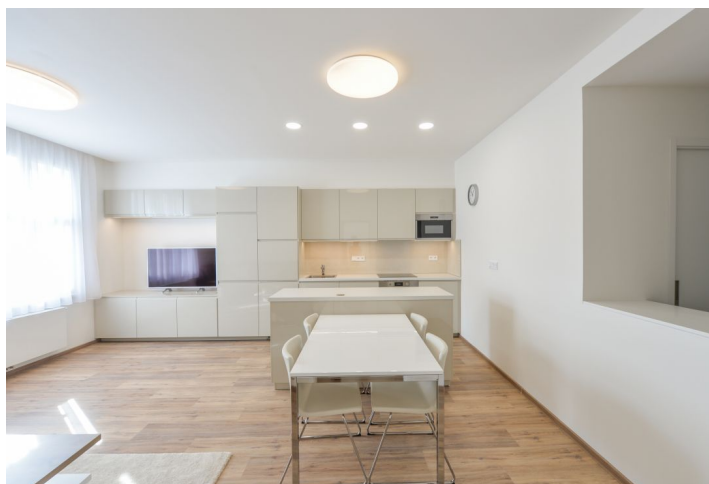




## Apartment Two-bedroom (3+kk)

Rented

90 m<sup>2</sup>, Prague 6, Dejvice, Svatovítská





## Apartment Two-bedroom (3+kk)

Rented

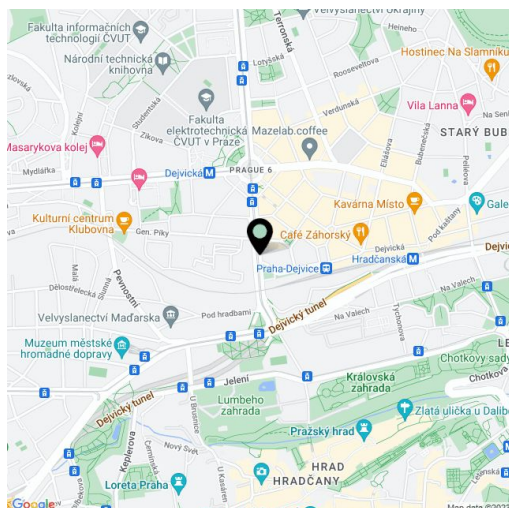
90 m<sup>2</sup>, Prague 6, Dejvice, Svatovítská

Total area	90 m <sup>2</sup>
Parking	-
Cellar	Yes
Service price	Monthly deposit for common building charges and water CZK 1.000/mo. Energies are billed separately (approx. CZK 6.000/mo.).
PENB	G
Reference number	33568
Available from	Immediately

This fully furnished, completely renovated 2-bedroom 2-bathroom apartment on the fifth top floor of a well maintained residential building with an elevator and a shared garden is situated in a popular residential area of Prague 6 – Dejvice with full amenities within easy reach. Located a few min. walk from the Dejvická metro station and Vítězné náměstí Square with multiple tram and bus stops, and within walking distance of the Prague Castle and Stromovka Park. Convenient access to numerous international schools and the airport. There is a mature shared garden and an outdoor gym right behind the building.

The sunny interior features a living room with a fully fitted open plan kitchen and a dining area, a master bedroom with an en-suite bathroom (walk-in shower, toilet), a second bedroom, a family bathroom (bathtub, toilet), a utility room, and an entrance hall.

Built-in wardrobes in both bedrooms and the hall, new windows, laminated floors, large format tiles, security entry door, gas boiler, blackout curtains, washer, dryer, dishwasher, microwave oven, TV, alarm, cellar.



\* Area of the unit according to the Civil Code. The area consists of the sum total area of the entire unit bounded by perimeter walls.