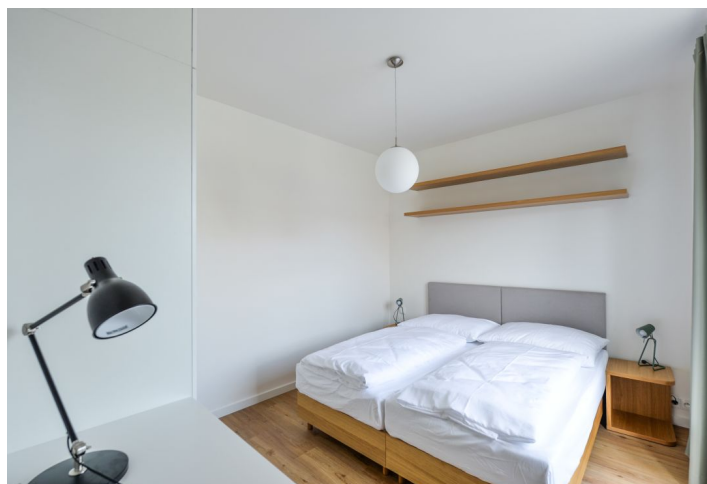




Apartment One-bedroom (2+kk)

Rented

35 m², Praha 6, Veleslavín, Veleslavínská





Apartment One-bedroom (2+kk)

Rented

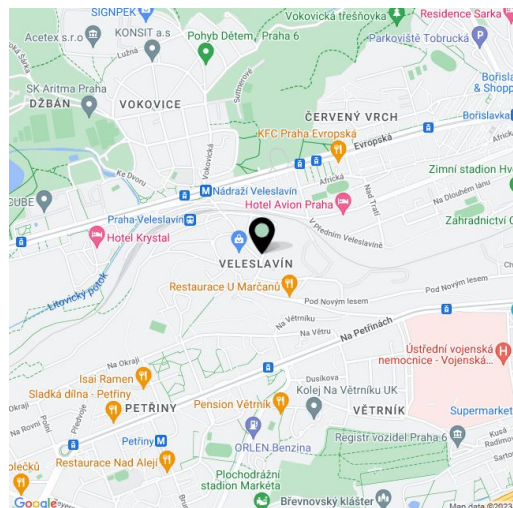
35 m², Praha 6, Veveslavín, Veveslavínská

Total area	50 m ²
Floor area*	35 m ²
Balcony	15 m ²
Parking	-
Cellar	-
PENB	G
Reference number	33600
Available from	Immediately

This fully furnished 1-bedroom flat with a 15 m² balcony is on the third top floor of the Veveslavín Residence (veveslavin.com), a completely refurbished eco-friendly apartment building designed by m4 architekti studio, with superb services. Situated near the Chateau Veveslavín, Divoká Šárka nature preserve and the Hvězda Park, on the border of Veveslavín and Ořechovka residential areas, with quick access to the city center and amenities, with Nádraží Veveslavín metro station and trams just two a min. walk from the building. Conveniently located for the airport and international schools in Prague 6.

The interior features a living room with a fully fitted open plan kitchen, a bedroom with built-in wardrobes, a shower room with a sink and a toilet, and an entrance hall with built-in wardrobes and storage. The balcony is accessible from both main rooms.

Online reception desk, guide to Prague cultural venues, smart home control system, vinyl floors, tiles, security entry door, central gas heating, sofabed, washer, dishwasher, induction cooktop, microwave oven, basic kitchenware, bed linen and towels, garden furniture, TV, video entry phone, alarm connected to a security agency, camera system. No lift. The rent includes service charges, the Internet, O2 TV, security and weekly cleaning and changing of bed linen and towels. Utilities are billed separately (heating, water, electricity). **No commission.**



* Area of the unit according to the Civil Code. The area consists of the sum total area of the entire unit bounded by perimeter walls.