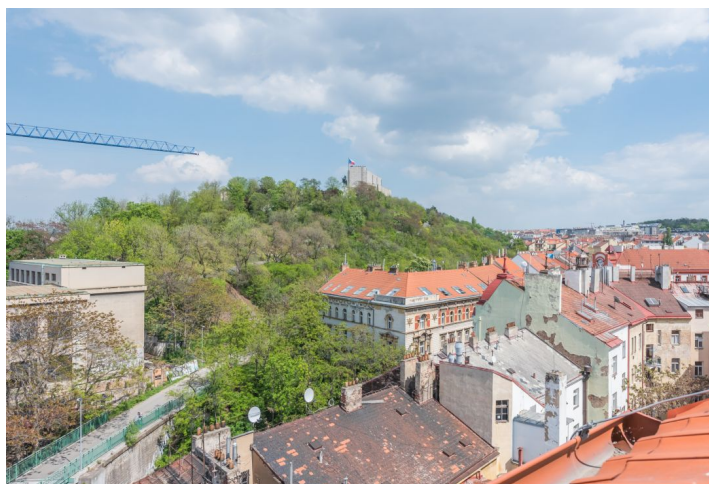




## Apartment Two-bedroom (3+kk)

Rented

89 m<sup>2</sup>, Prague 3, Žižkov, Řehořova





## Apartment Two-bedroom (3+kk)

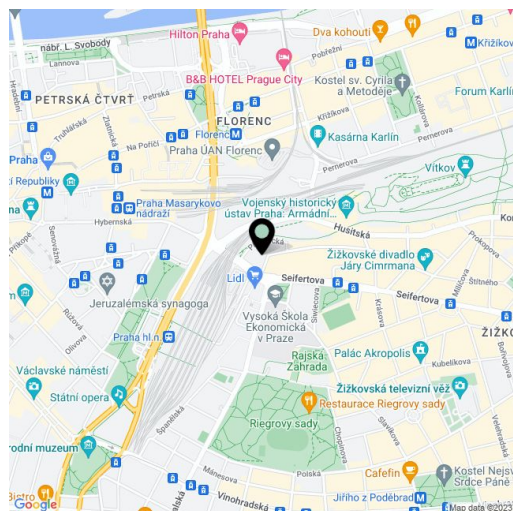
**Rented**89 m<sup>2</sup>, Prague 3, Žižkov, Řehořova

Total area	89 m <sup>2</sup>
Parking	-
Cellar	-
PENB	G
Reference number	33627
Available from	Immediately

New 2-bedroom attic apartment benefiting from views of the Vítkov park, on the 4th top floor of a completely newly refurbished residential building from the beginning of the 20th century, with a new lift and preserved original details. Located on a quiet street in a sought after area on the border between Žižkov and Vinohrady, within walking distance of the city center, a few min. walk to bus and tram stops, one short stop to the Hlavní nádraží metro station. The location offers complete amenities including sports and relaxation opportunities in the nearby parks the Vítkov Hill, Riegrovy sady and Parukářka, as well as a popular bike path.

The apartment consists of a living room with a fully fitted open plan kitchen and a dining area, two separate bedrooms, a bathroom including a bathtub, a walk-in shower and a toilet, an additional separate toilet, a storage room, and an entrance hall.

**Wooden floors**, tiles, central gas heating, dishwasher, induction cooktop. Monthly deposit for service charges, water and heating: CZK 5342/month. Electricity is billed separately.



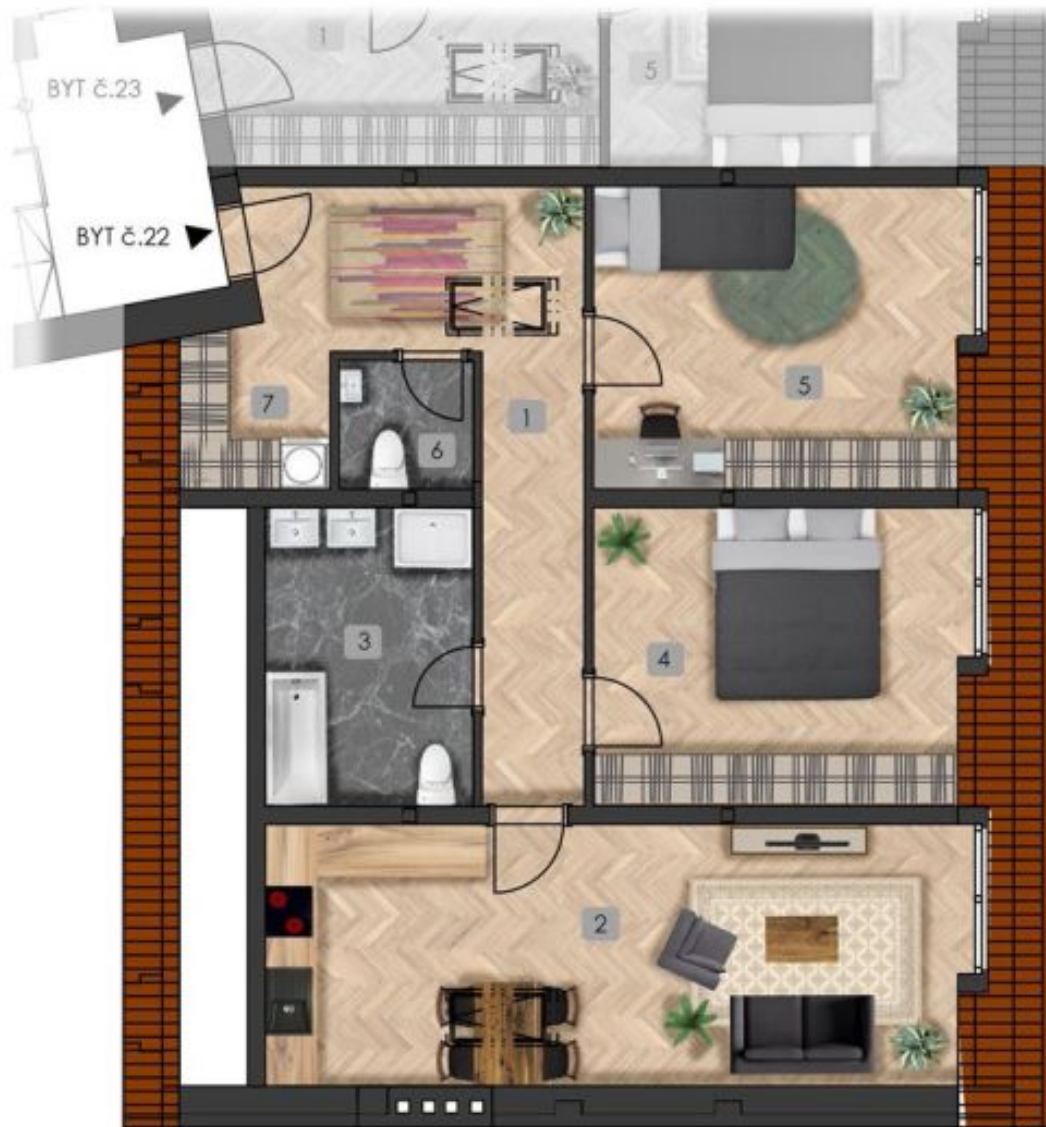
\* Area of the unit according to the Civil Code. The area consists of the sum total area of the entire unit bounded by perimeter walls.



## Apartment Two-bedroom (3+kk)

89 m<sup>2</sup>, Prague 3, Žižkov, Řehořova

Rented





## Apartment Two-bedroom (3+kk)

89 m<sup>2</sup>, Prague 3, Žižkov, Řehořova

Rented

Byt č.22

5.podlaží 89,36 m<sup>2</sup>

1	Chodba	13,56
2	Obývací prostor+kk	25,40
3	Koupelna	8,50
4	Pokoj	15,58
5	Pokoj	15,77
6	WC	2,35
7	Komora	3,56



umístění bytu na patře



## Apartment Two-bedroom (3+kk)

89 m<sup>2</sup>, Prague 3, Žižkov, Řehořova

Rented

umístění bytu v objektu

