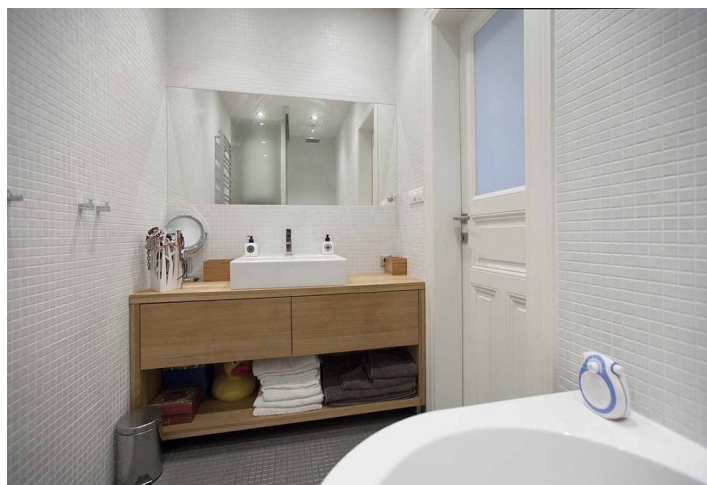
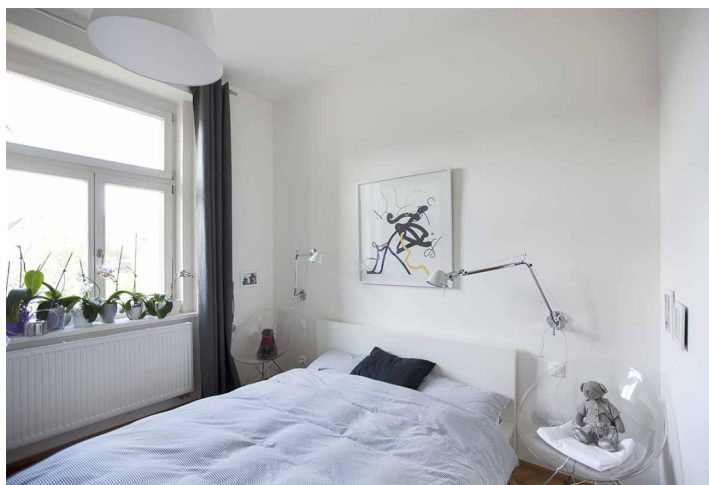
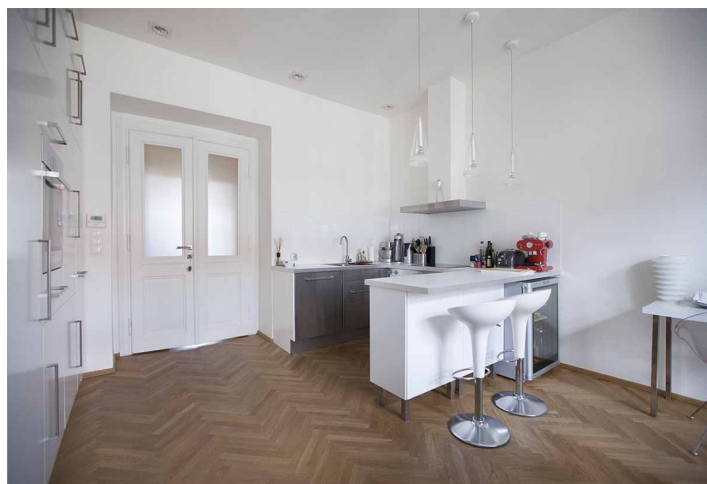
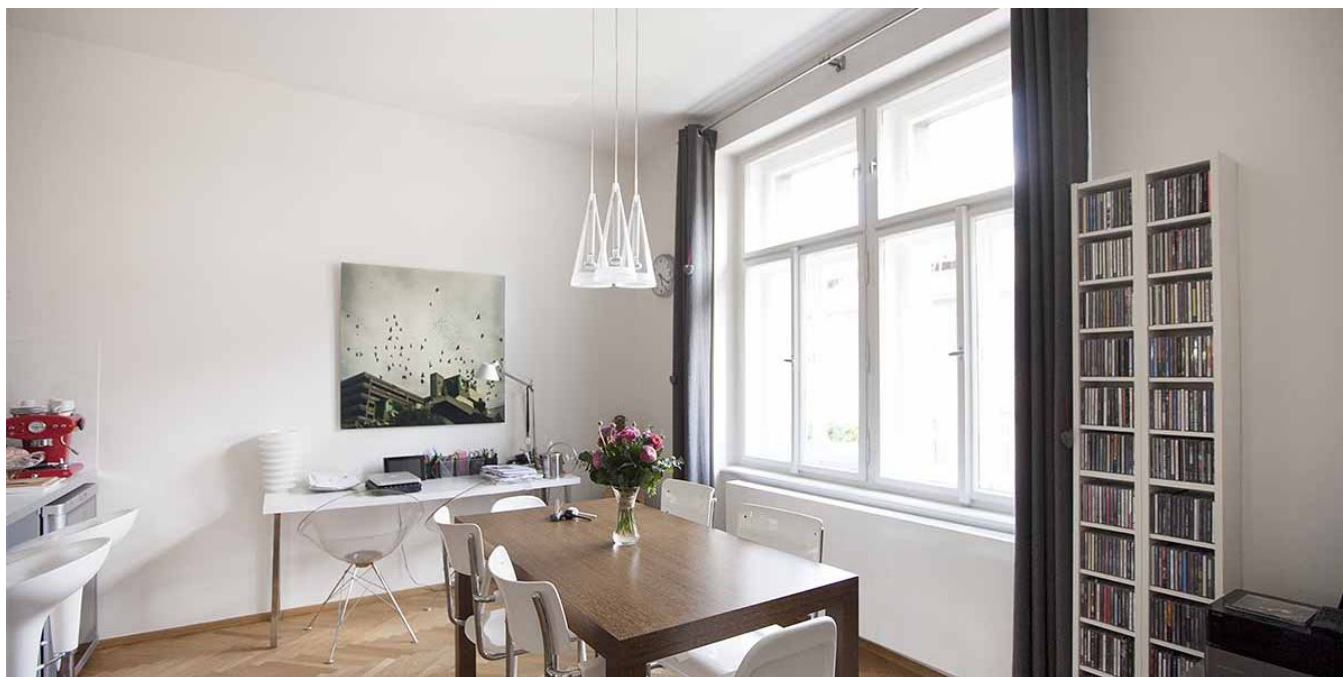




Apartment One-bedroom (2+kk)

Rented

67 m², Prague 6, Bubeneč, Jaselská





Apartment One-bedroom (2+kk)

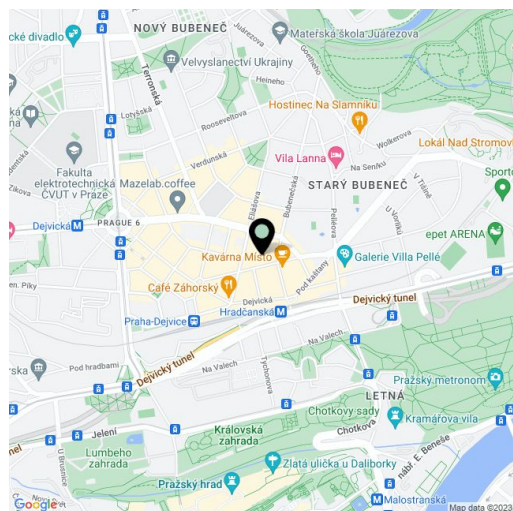
Rented67 m², Prague 6, Bubeneč, Jaselská

Total area	67 m ²
Parking	-
Cellar	Yes
PENB	G
Reference number	33685
Available from	Immediately

This completely refurbished and furnished 1-bedroom apartment is situated on the fourth floor of an apartment building with a lift, in quiet tree lined street in the popular residential neighborhood of Bubeneč, with full amenities within easy reach. The building is located in close vicinity of the Prague Castle, the Stromovka and Letná parks, just moments from the Hradčanská metro station, tram/bus stops and the Blanka tunnel access roads. Attractive location with quick connection to the city center, the airport and international schools.

The apartment features a south-east facing living room with a fully fitted open plan kitchen and a dining area, 1 bedroom (with a storage room) facing the green courtyard, a **large fitted walk-in closet**, a bathroom with a bathtub, a separate toilet, and an entrance hall.

High-ceilings, large windows, **oak parquet flooring**, underfloor heating in the bathroom and toilet, security entry door, built-in storage, high quality lighting fixtures by **Artemide, Prolicht and Flos, Gustavsberg and Laufen** sanitary ware, Butterfly mosaic tiling, washer / dryer, Bosch kitchen appliances, dishwasher, wine fridge, gas boiler, UPC cable, 8.6 m² **cellar**. Service charges and utilities are billed separately. Available from November 1, 2019.



* Area of the unit according to the Civil Code. The area consists of the sum total area of the entire unit bounded by perimeter walls.



Apartment One-bedroom (2+kk)

Rented

67 m², Prague 6, Bubeneč, Jaselská

