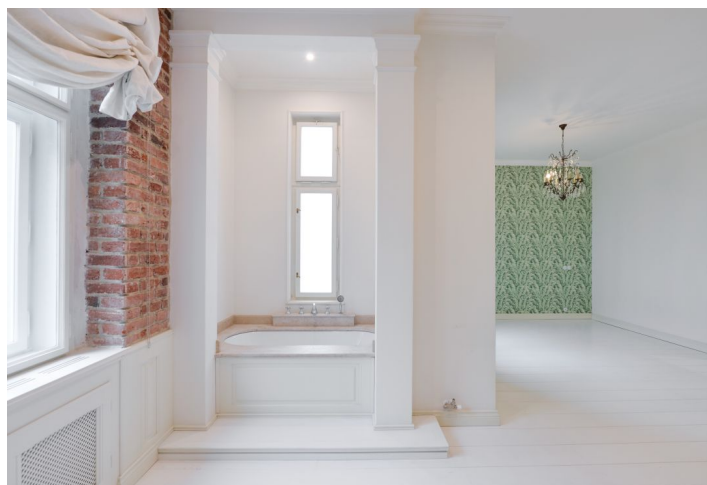




## Apartment Four-bedroom (5+kk)

Rented

305 m<sup>2</sup>, Prague 1, Staré Město, Haštalská





## Apartment Four-bedroom (5+kk)

Rented

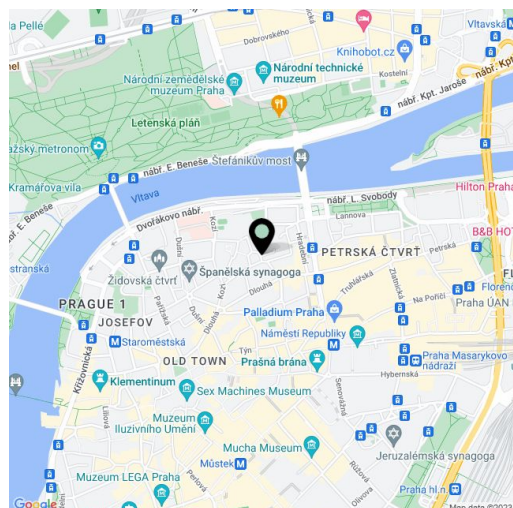
305 m<sup>2</sup>, Prague 1, Staré Město, Haštalská

|                  |  |
|------------------|--|
| Total area       | 310 m <sup>2</sup>                                   |
| Floor area*      | 305 m <sup>2</sup>                                   |
| Balcony          | 5 m <sup>2</sup>                                     |
| Parking          | -  |
| Cellar           | -  |
| Service price    | Service charges and utilities are billed separately. |
| PENB             | G  |
| Reference number | 33755  |
| Available from   | Immediately  |

This is a comfortable, high quality, partly furnished 3-4-bedroom 2-bathroom apartment with 2 balconies, on the second floor of a fully refurbished Art Nouveau building with a new lift, in the historic center of Prague. Prestigious location close to the Vltava embankment, the Old Town Square and the luxurious Pařížská street, with full amenities nearby and within walking distance of Náměstí Republiky and Staroměstská metro stations.

The airy interior features a huge living room with a dining area, a fully fitted open plan kitchen, bay windows, an original **Dutch stove** and a **balcony** with views of a picturesque square, an adjacent office with a **fireplace** and bay windows, a master bedroom with a fitted **walk-in closet** and an open en-suite bathroom (bathtub, walk-in shower, toilet), a utility room, an additional preparatory kitchenette, a guest toilet, and a large entrance hall with a **piano** and built-in wardrobes. There are two further separate bedrooms (one with a **walk-in closet**), and a spacious bathroom (bathtub, walk-in shower, toilet) with a **balcony** facing the back yard.

Preserved original architectural details, **harwood floors**, tiles, **stucco ornaments**, gas boiler, underfloor heating, washer, dryer, induction cooktop, dishwasher, central vacuum cleaner, alarm.



\* Area of the unit according to the Civil Code. The area consists of the sum total area of the entire unit bounded by perimeter walls.