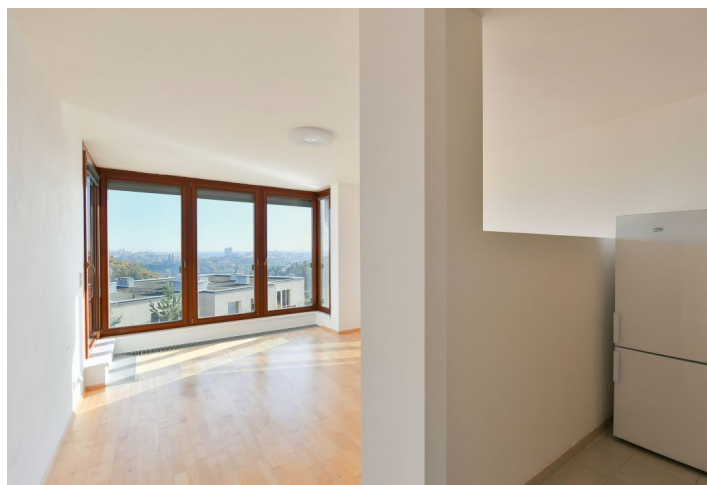




Apartment One-bedroom (2+kk)

Rented

52 m², Prague 5, Smíchov, Štorkánova





Apartment One-bedroom (2+kk)

Rented

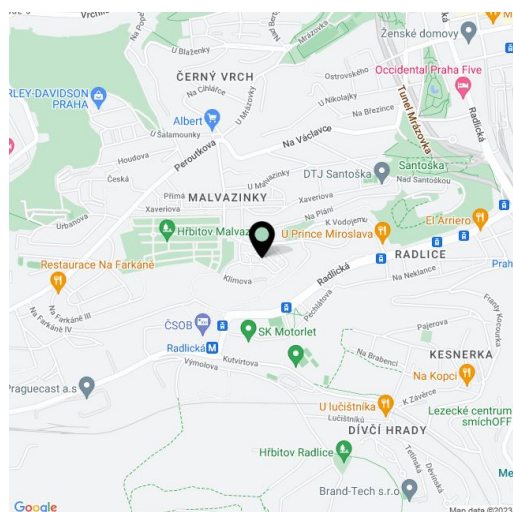
52 m², Prague 5, Smíchov, Štorkánova

| | |
|------------------|--|
| Total area | 55 m ² |
| Floor area* | 52 m ² |
| Balcony | 3 m ² |
| Parking | Garage parking. |
| Garage | Yes |
| Cellar | Yes |
| Service price | Deposit for services, water, and heating CZK 3,700/month. Electricity - transferred to the tenant. |
| PENB | C |
| Reference number | 33833 |
| Available from | Immediately |

Boasting wonderful panoramic views of Prague and green views incl. Dívčí Hradý Hill, this unfurnished apartment with a balcony is on the 2nd floor of the modern Panorama gated residential project with underground parking. Set in the quiet prestigious Prague 5 area of Malvazinky, in close vicinity of the Prokop Valley, with quick access to amenities and the city center. Located five minutes from the Radlická metro station, ten min. by bus from the Anděl metro and shopping zone, and five min. from sports facilities incl. a swimming pool, fitness center, tennis courts, and more.

The interior consists of a living room with a fully fitted open plan kitchen and dining area, one bedroom, a bathroom including a bathtub and a toilet, a large storage room, and an entrance hall. The **balcony** is accessible from both main rooms.

Wooden floating floors, tiles, security entry door, French windows, automatic exterior blinds, central heating, underfloor heating in the bathroom, washer, dishwasher, alarm, video entry phone, optic cable, **cellar**. One **garage parking** space is included.



* Size of the unit according to the Housing Act.

The area consists of the sum total of the internal area of every room.