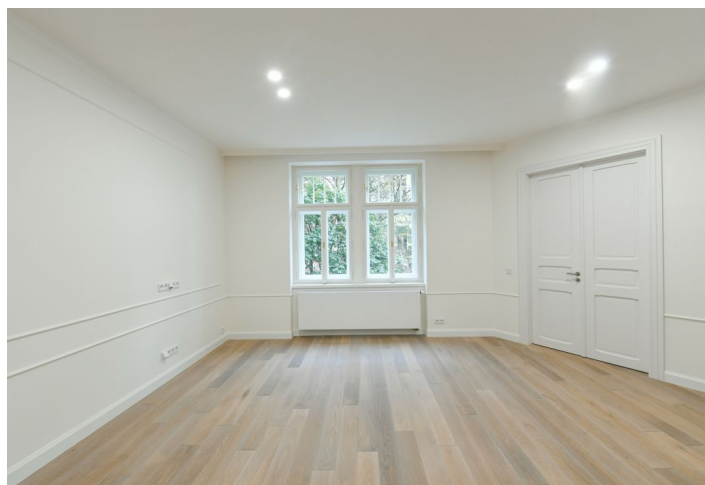
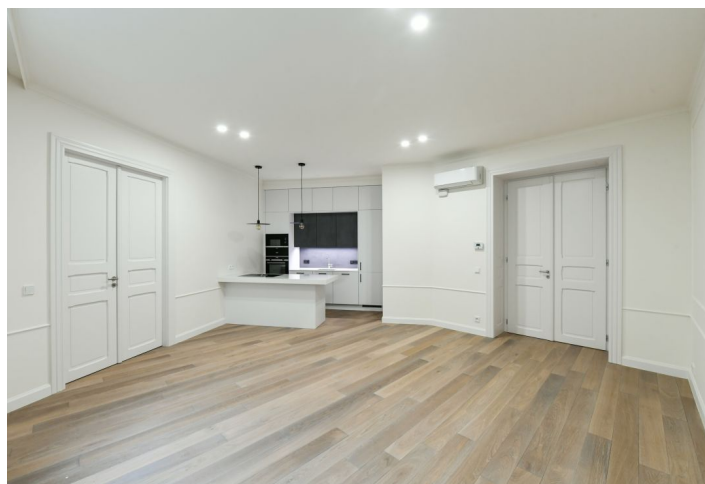




Apartment Three-bedroom (4+kk)

€ 3 665 | CZK 92 065

118 m², Prague 3, Vinohrady, náměstí Jiřího z Poděbrad





Apartment Three-bedroom (4+kk)

€ 3 665 | CZK 92 065

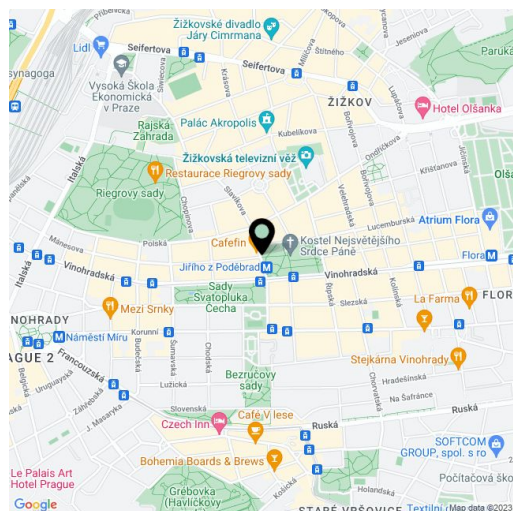
118 m², Prague 3, Vinohrady, náměstí Jiřího z Poděbrad

Total area	120 m ²
Floor area*	118 m ²
Balcony	2 m ²
Parking	Garage parking nearby.
Garage	Yes
Cellar	-
Service price	Services and water: EUR 125/person/month. Gas and electricity will be transferred to the tenant.
PENB	G
Reference number	33920
Available from	Immediately

This attractive, fully renovated apartment with a balcony is on the 1st floor of a completely refurbished Art Nouveau building with an elevator and preserved original features. Conveniently located in the popular Vinohrady residential area at the Jiřího z Poděbrad Square with a metro station and tram links, plus full amenities within easy reach, and within walking distance of lovely Riegrovy Sady Park.

With high-standard materials and finishes, the interior features two separate bedrooms, a living room with a fully fitted open plan kitchen and dining area, an adjacent office with access to the **balcony**, a bathroom with a bathtub and toilet, an additional separate toilet, a storage room, and a spacious entrance hall.

Air-conditioning, new kitchen, high ceilings, large windows, **hardwood floors**, tiles, built-in wardrobes, security entry door, gas boiler, washer/dryer, dishwasher. The apartment is **unfurnished**, it can be equipped with furniture at a higher rent. One **garage parking** space is included (located a 7 min. walk from the building).



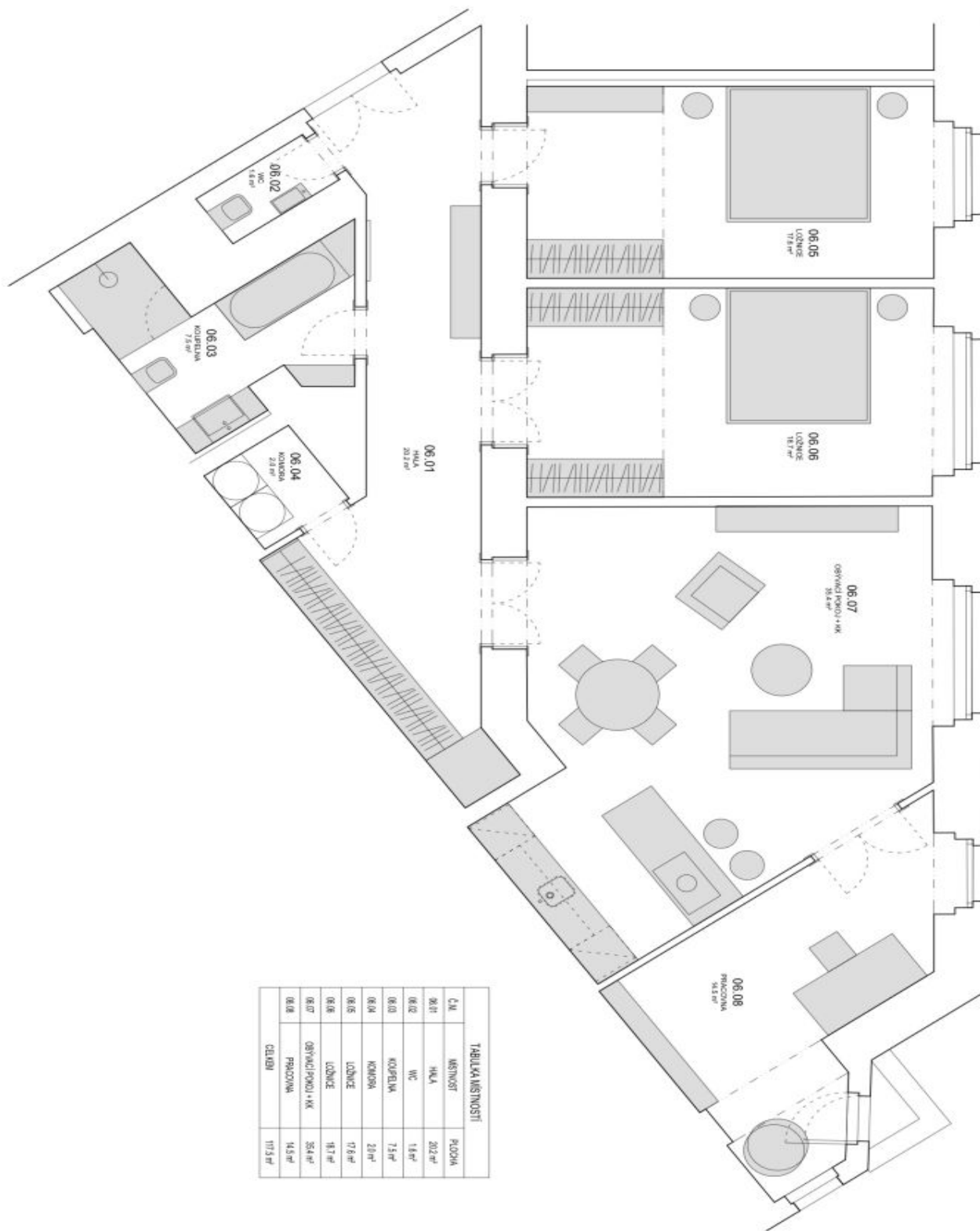
* Area of the unit according to the Civil Code. The area consists of the sum total area of the entire unit bounded by perimeter walls.



Apartment Three-bedroom (4+kk)

€ 3 665 | CZK 92 065

118 m², Prague 3, Vinohrady, náměstí Jiřího z Poděbrad



TABULKA MÍSTNOSTI		
Č. M.	NÁZEV MÍSTNOSTI	PLOCHA
06.01	HALL	20.2 m ²
06.02	WC	4.8 m ²
06.03	KOBLENNA	7.8 m ²
06.04	KUCHYNA	2.8 m ²
06.05	LOŽNICE	17.8 m ²
06.06	LOŽNICE	18.7 m ²
06.07	OBÝVAČI POKOJ + KK	35.4 m ²
06.08	PRACOVNA	14.5 m ²
CELKEM		117.5 m ²