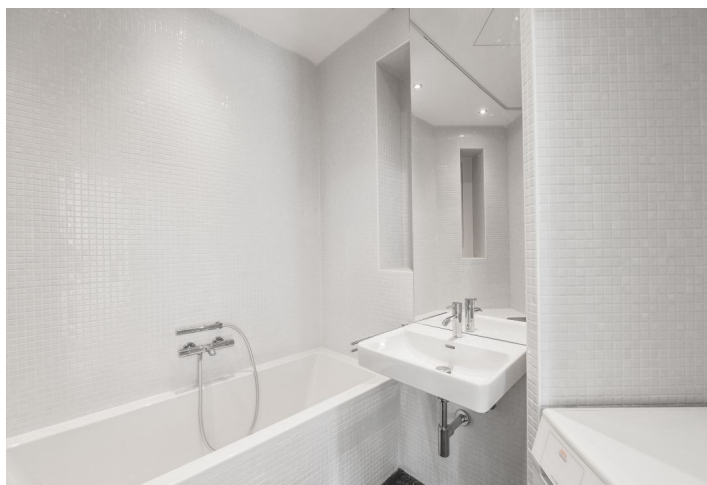




Apartment One-bedroom (2+1)

Rented

60 m², Prague 2, Vinohrady, Chodská





Apartment One-bedroom (2+1)

Rented

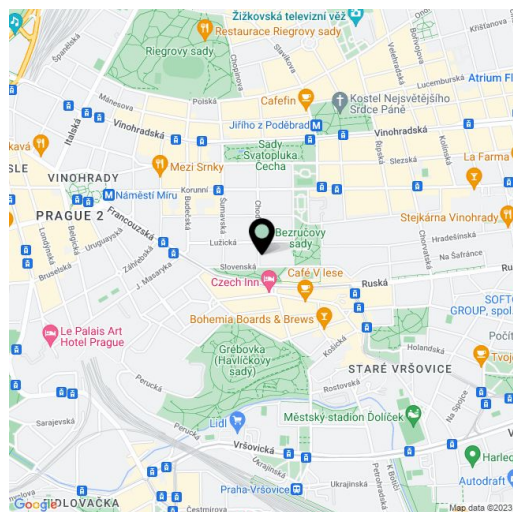
60 m², Prague 2, Vinohrady, Chodská

Total area	60 m ²
Parking	-
Cellar	-
Service price	Services and water: CZK 1,800/month. Gas and electricity - transferred to the tenant.
PENB	G
Reference number	34009
Available from	Immediately

This completely refurbished apartment designed by a renowned architectural studio is on the upper ground floor of a well-maintained renovated traditional residential building by the eminent Czech architect Emil Králíček. Set in the much sought-after neighborhood of Vinohrady right next to Bezručovy Sady Park, within easy reach of full amenities and with quick access to the city center. Located within walking distance of the Náměstí Míru and Jiřího z Poděbrad metro stations, and the lovely Havlíčkovy Sady and Sady Bratří Čapků parks.

The airy interior features a living room and one bedroom both with park views, a spacious hall with a fully fitted open plan kitchen, a bathroom including a bathtub, a toilet, and a bidet shower, a walk-in closet, and a closet.

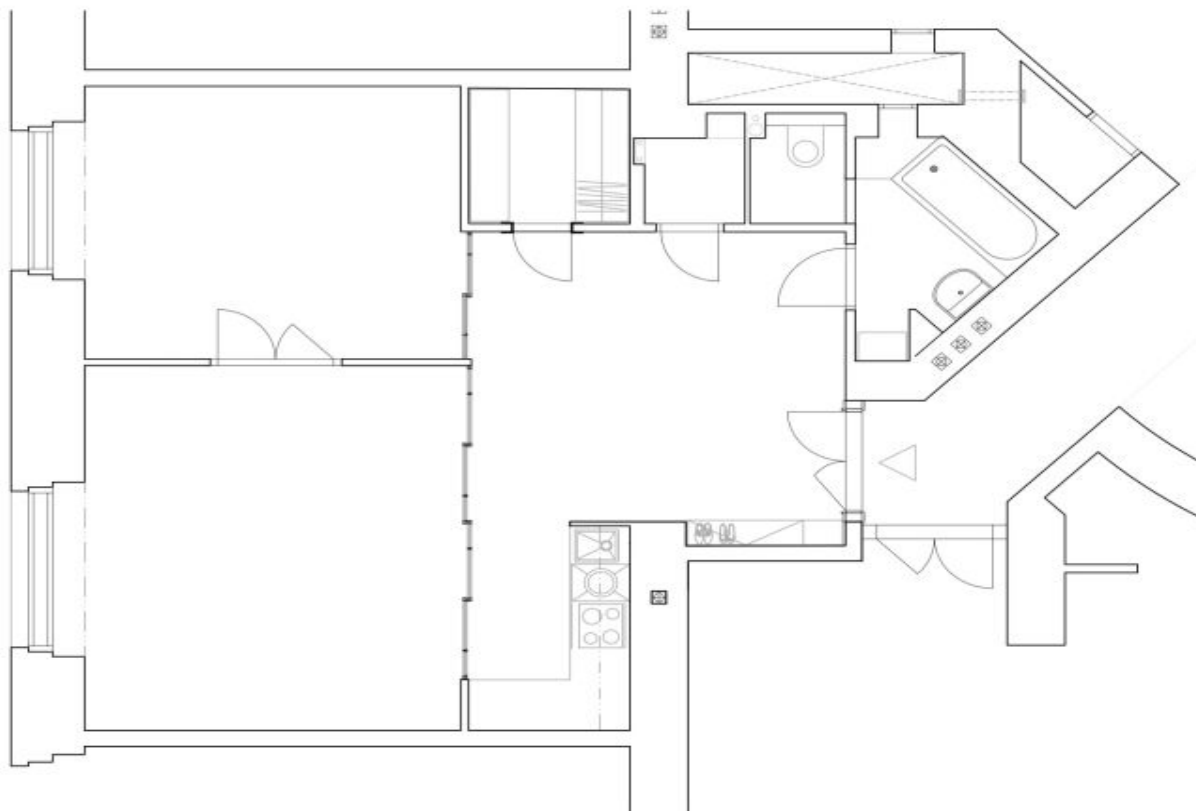
High ceilings, large windows, hardwood parquet floors, security entry door, gas boiler, washing machine, quality kitchen appliances (dishwasher, induction cooktop, and a combination oven), alarm.



* Area of the unit according to the Civil Code. The area consists of the sum total area of the entire unit bounded by perimeter walls.



Apartment One-bedroom (2+1)

Rented60 m², Prague 2, Vinohrady, Chodská

Legenda místnosti		
Označení výřezu	Účel místnosti	Plocha [m ²]
1.01	Jídelní hala s kuchyní	18,90
1.03	Obývací pokoj	18,05
1.04	Ložnice	13,52
1.05	Šatna	2,80
1.06	komora	1,15
1.07	Toaleta	1,28
1.08	Koupelna	3,97
		59,67