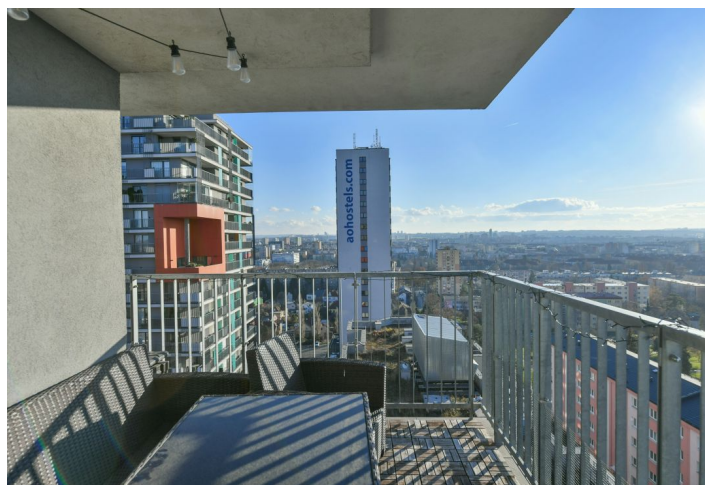
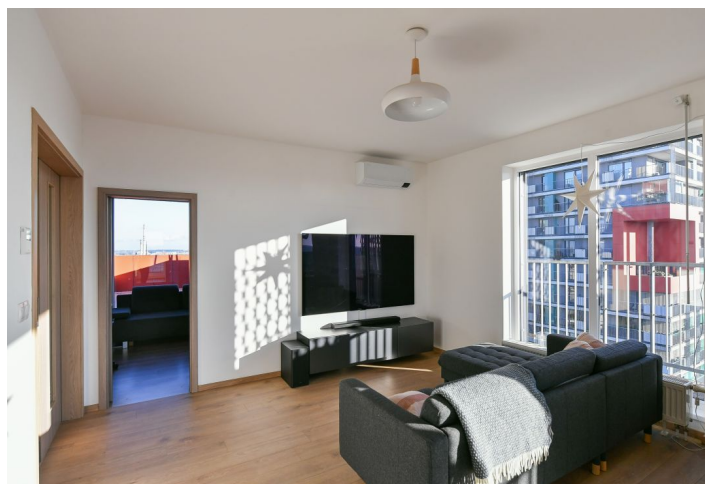




Apartment Two-bedroom (3+kk)

€ 1334 | CZK 33 500

106 m², Prague 10, Malešice, Nad Úžlabinou





Apartment Two-bedroom (3+kk)

€ 1 334 | CZK 33 500

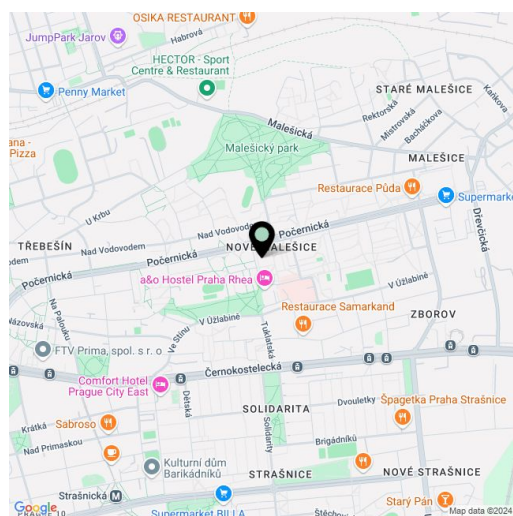
106 m², Prague 10, Malešice, Nad Úžlabinou

Total area	166 m ²
Floor area*	106 m ²
Terrace	60 m ²
Parking	Garage parking.
Garage	Yes
Cellar	-
Service price	Monthly deposit for services, water, and heating: CZK 8,500. Electricity is billed separately.
PENB	C
Reference number	34089
Available from	01.02.2025

Boasting 2 wraparound terraces (total of 60 m²) and far-reaching unobstructed panoramic views, this semi-furnished air-conditioned 2-bedroom apartment is situated on the 13th floor of a residential project with a 24/7 reception and security, camera system, elevator, and underground parking. Located in a green residential neighborhood within quick reach of the Malešický Park and Forest, with complete amenities in the immediate vicinity incl. a supermarket, a 24/7 pharmacy, a fitness center, restaurants, and more. The nearby bus stop provides connections to the Želivského metro station, and the Malešický mikropivovar (Microbrewery Malešice) and the Hector sports center with a wide range of activities are within easy reach.

The interior features a spacious living room with a dining area and fully fitted open plan kitchen, two bedrooms, a bathroom including a bathtub and a toilet, and a large entrance hall with built-in wardrobes and storage. All main rooms have access to the terrace.

Laminate floors, tiles, French windows, security entry door, central heating, exterior blinds, washing machine, dishwasher, microwave oven. A large garage parking space is available at CZK 1,500/month. The apartment can be rented unfurnished.



* Area of the unit according to the Civil Code. The area consists of the sum total area of the entire unit bounded by perimeter walls.