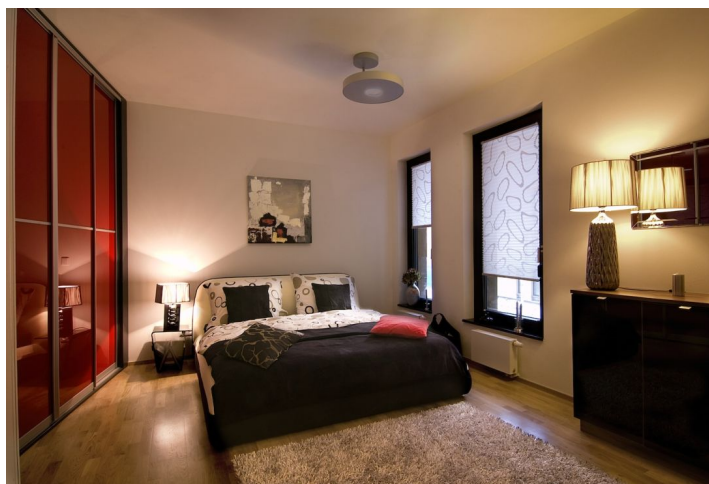




## Apartment Two-bedroom (3+kk)

Sold

79 m<sup>2</sup>, Prague 4, Michle, Baarova



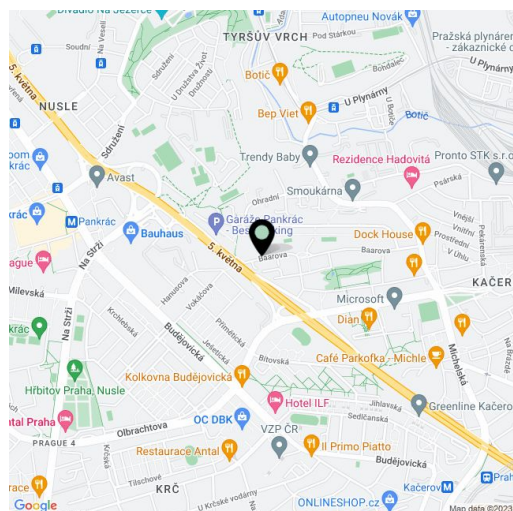


## Apartment Two-bedroom (3+kk)

**Sold**79 m<sup>2</sup>, Prague 4, Michle, Baarova

<b>Total area</b>	88 m <sup>2</sup>
<b>Floor area*</b>	79 m <sup>2</sup>
<b>Terrace</b>	9 m <sup>2</sup>
<b>Parking</b>	1 garage parking space included in the purchase price.
<b>Garage</b>	Yes
<b>Cellar</b>	Yes
<b>PENB</b>	G
<b>Reference number</b>	341

Apartment on the 2nd floor of building A, the highest of the three buildings of a new residential development. The project is urbanistically connected to the commercial BB Centrum through a newly created park. The apartment offers bright living room with generous terrace, dining area and kitchen corner (preparation), 2 bedrooms, bathroom, guest toilet and utility room. The apartment features security entrance door Lignis with stainless steel fittings. Wooden floors come either in Ash or Oak. Furnishing standards offer two variants – classic and modern. Bathroom fittings by Laufen and Grohe, tiling by La Faenza / Imola Ceramica. The residence with 24hour reception offers modern lifestyle in an area with full range of amenities. Interior 79.4 m<sup>2</sup>, terrace 8.7 m<sup>2</sup>, cellar 5.6 m<sup>2</sup> and garage parking for one car included (price including the VAT). The photos come from show apartment.



\* Area of the unit according to the Civil Code. The area consists of the sum total area of the entire unit bounded by perimeter walls.