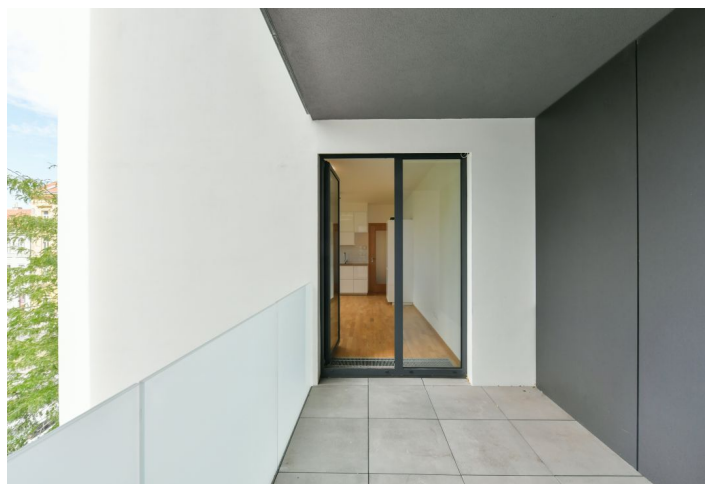




Apartment One-bedroom (2+kk)

Rented

54 m², Prague 7, Holešovice, Dělnická





Apartment One-bedroom (2+kk)

Rented

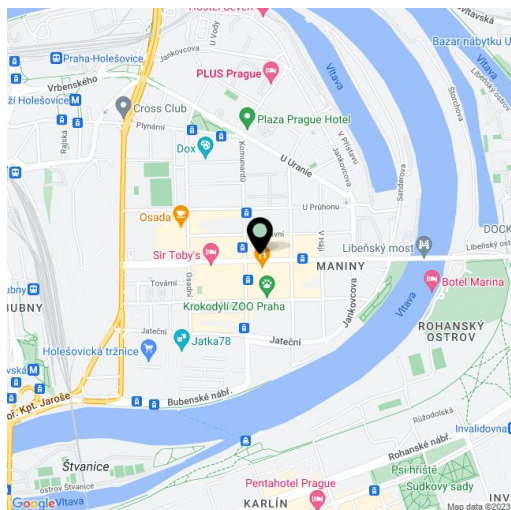
54 m², Prague 7, Holešovice, Dělnická

Total area	58 m ²
Floor area*	54 m ²
Loggia	4 m ²
Parking	Garage parking space included in the rent
Garage	Yes
Cellar	Yes
PENB	B
Reference number	34118
Available from	Immediately

This brand new 1-bedroom apartment with an enclosed balcony is on the second floor of the residential project Vivus Osadní with a lift and underground parking in Holešovice, Prague 7. Location with great access to full amenities, and within easy reach of the city center with the Nádraží Holešovice, Palmovka and Vltavská metro stations just a few tram stops away, and with the DOX Center for Contemporary Art and the La Fabrika theater close-by.

The apartment features a living room with a fully fitted open plan kitchen, a dining area and access to the **enclosed balcony**, a bedroom, a bathroom including a bathtub, a toilet and a bidet shower, and an entrance hall.

Wooden floors, large format tiles, security entry door, Hansgrohe and Villeroy & Boch bathroom fixtures and fittings, washer / dryer, dishwasher, microwave oven, video entry phone, **cellar**, camera system and chip entry in the building. Deposit for common building charges and heating CZK 3800/month. Electricity will be transferred to the tenant.



* Area of the unit according to the Civil Code. The area consists of the sum total area of the entire unit bounded by perimeter walls.